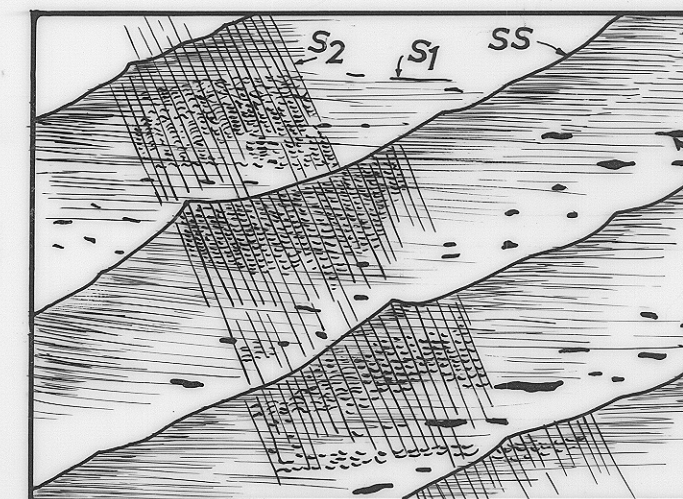
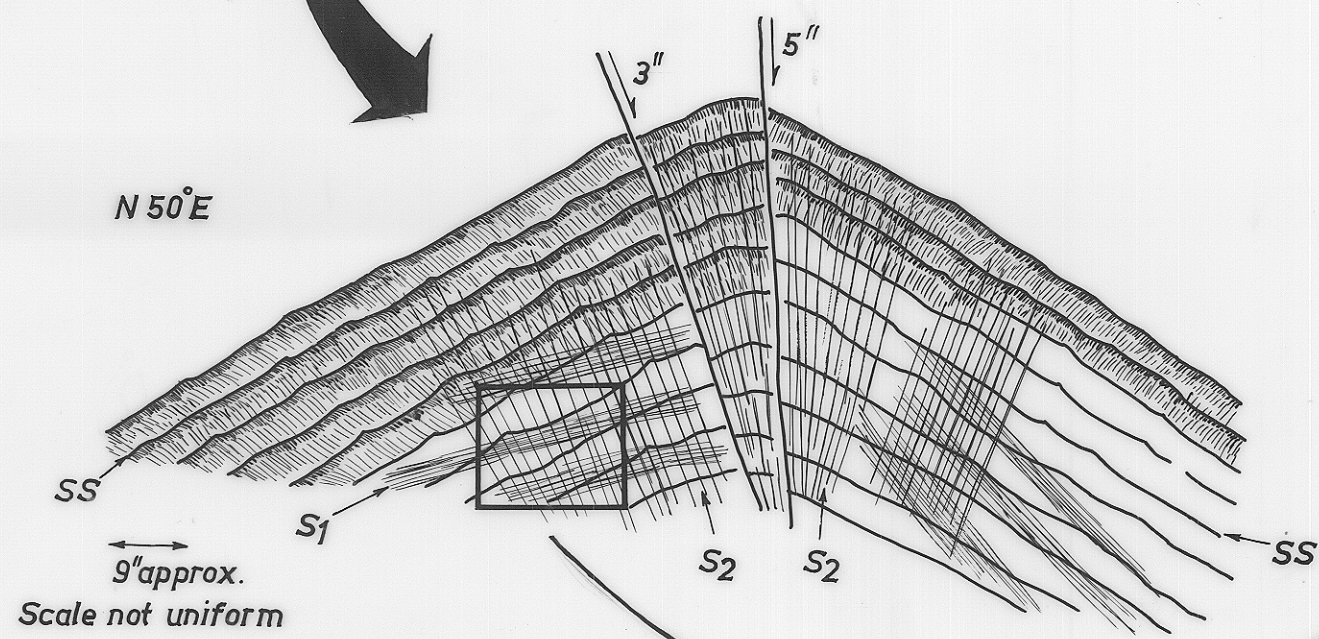
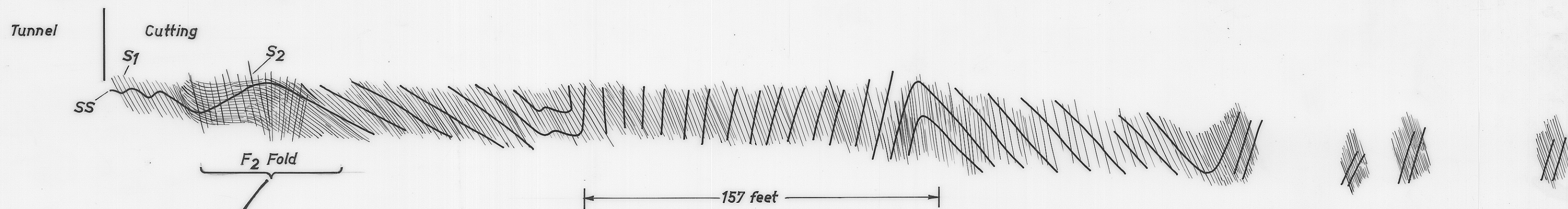


3331

Fig



Argillaceous fragments parallel S_1 and cut by S_2

NOTE: S_1 and S_2 are found throughout the fold.

NOTE: SS- impure sandstone grading upwards through laminated siltstone into slate.
 S_1 - slaty cleavage, developed throughout the fold.
 S_2 - strain-slip cleavage present throughout the fold.

OBSERVED RELATIONSHIPS BETWEEN SS, S_1 AND S_2 AT TUNNEL

Fig. 28 b(1) & 28b(2)

5 cm

Reduce to 4"