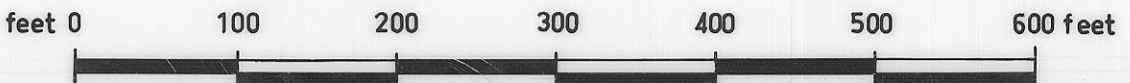


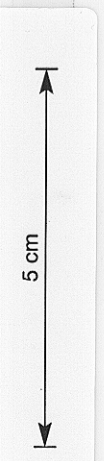
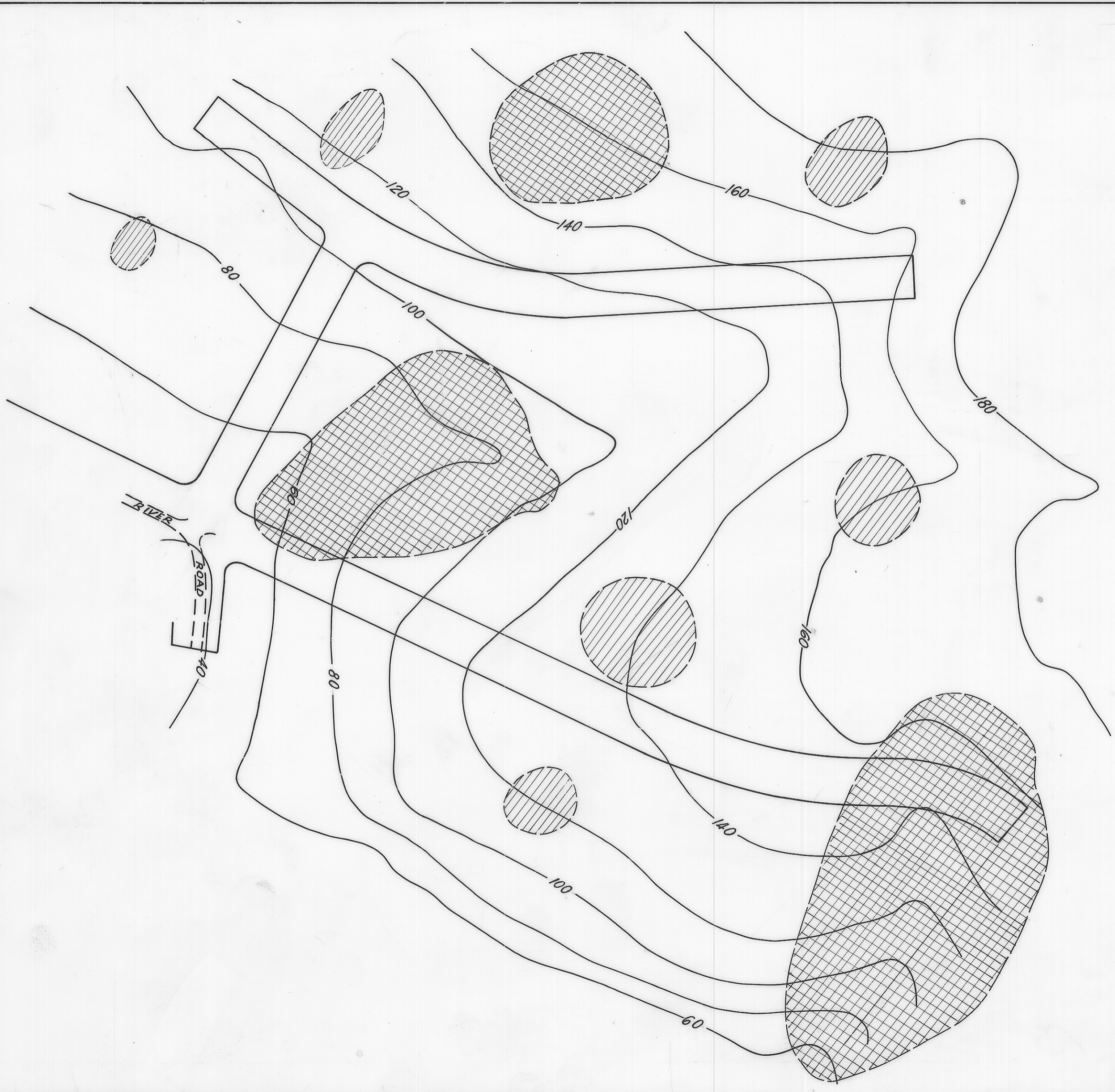


PLAN OF DEVONPORT INVESTMENTS PTY. LTD.
AMBLESIDE SUBDIVISION



-  Areas where 2 or 3 test pits & drill holes are suggested to determine the thickness of unconsolidated material & of what the bedrock consists.
-  Areas where 1 test pit or drill hole is suggested.

Geologist: W.L. Matthews
Drawn: T.J. Walsh
Sept. 1970



3367A

379