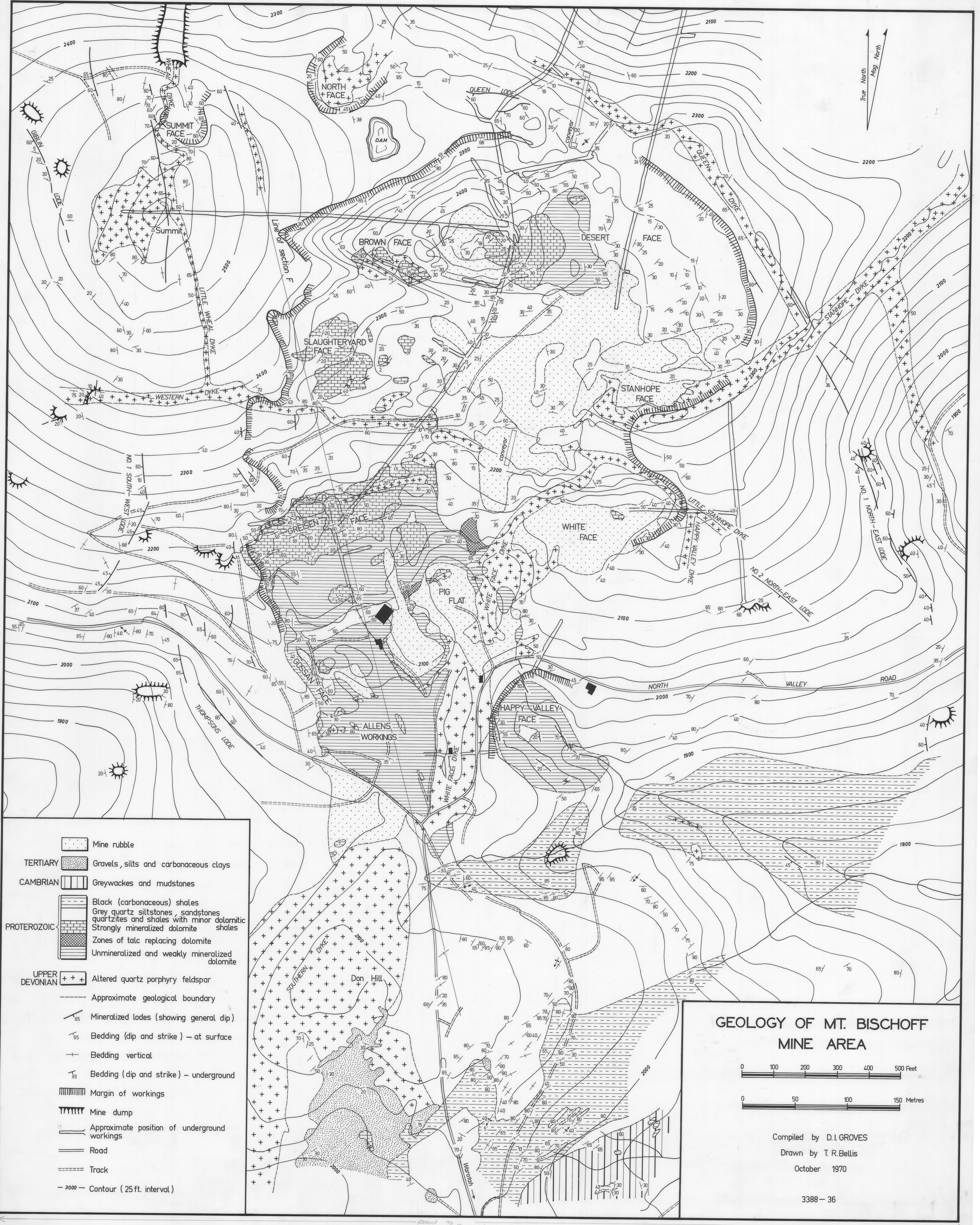


5 cm



- Mine rubble
- TERTIARY** Gravels, silts and carbonaceous clays
- CAMBRIAN** Greywackes and mudstones
- PROTEROZOIC**
 - Black (carbonaceous) shales
 - Grey quartz siltstones, sandstones, quartzites and shales with minor dolomitic shales
 - Strongly mineralized dolomite
 - Zones of talc replacing dolomite
 - Unmineralized and weakly mineralized dolomite
- UPPER DEVONIAN** Altered quartz porphyry feldspar
- Approximate geological boundary
- Mineralized lodes (showing general dip)
- Bedding (dip and strike) - at surface
- Bedding vertical
- Bedding (dip and strike) - underground
- Margin of workings
- Mine dump
- Approximate position of underground workings
- Road
- Track
- 3000 - Contour (25 ft. interval)

GEOLOGY OF MT. BISCHOFF MINE AREA

0 100 200 300 400 500 Feet

0 50 100 150 Metres

Compiled by D.I.GROVES
 Drawn by T.R.Bellis
 October 1970