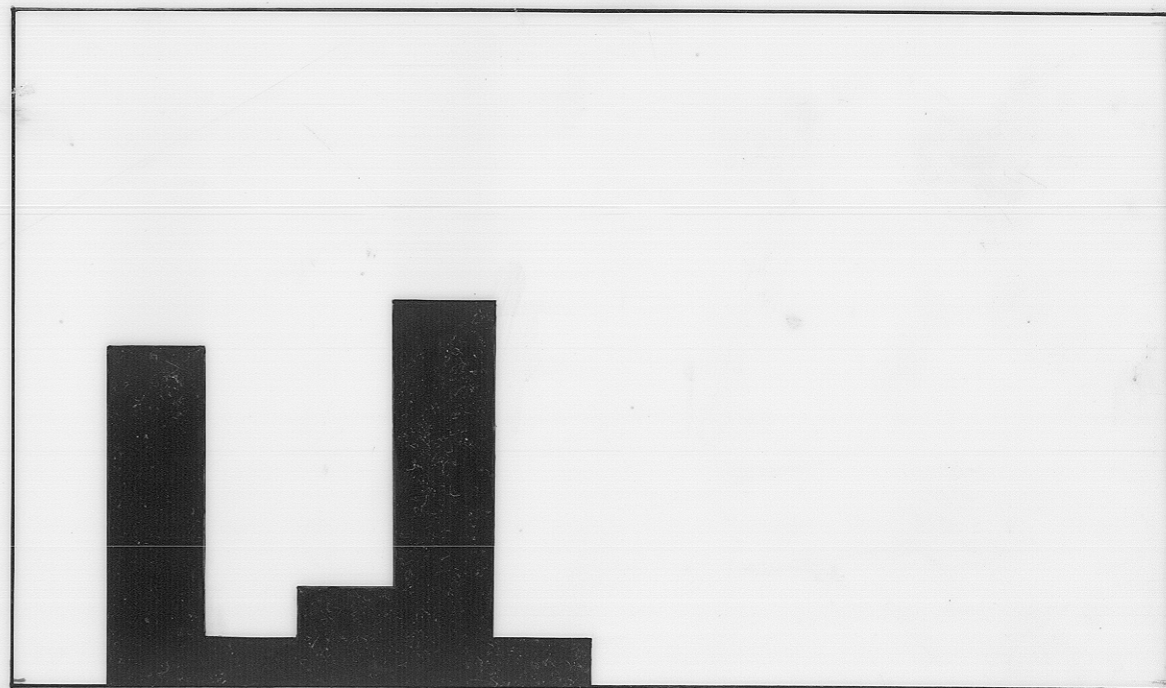
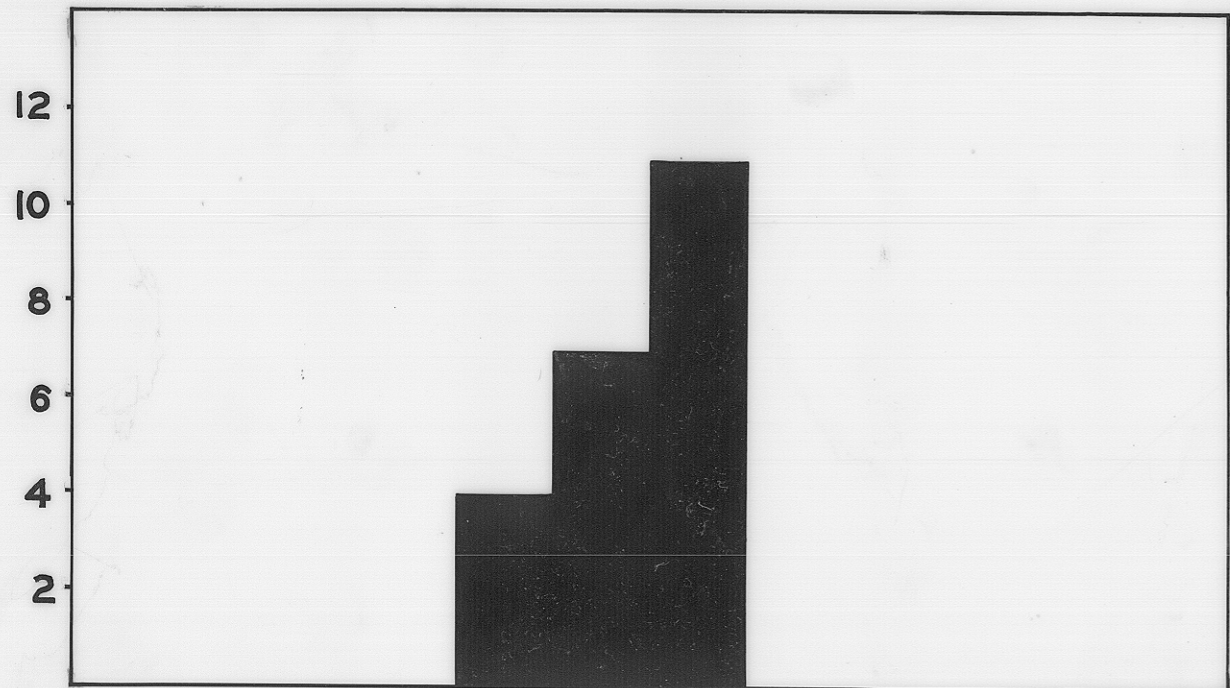
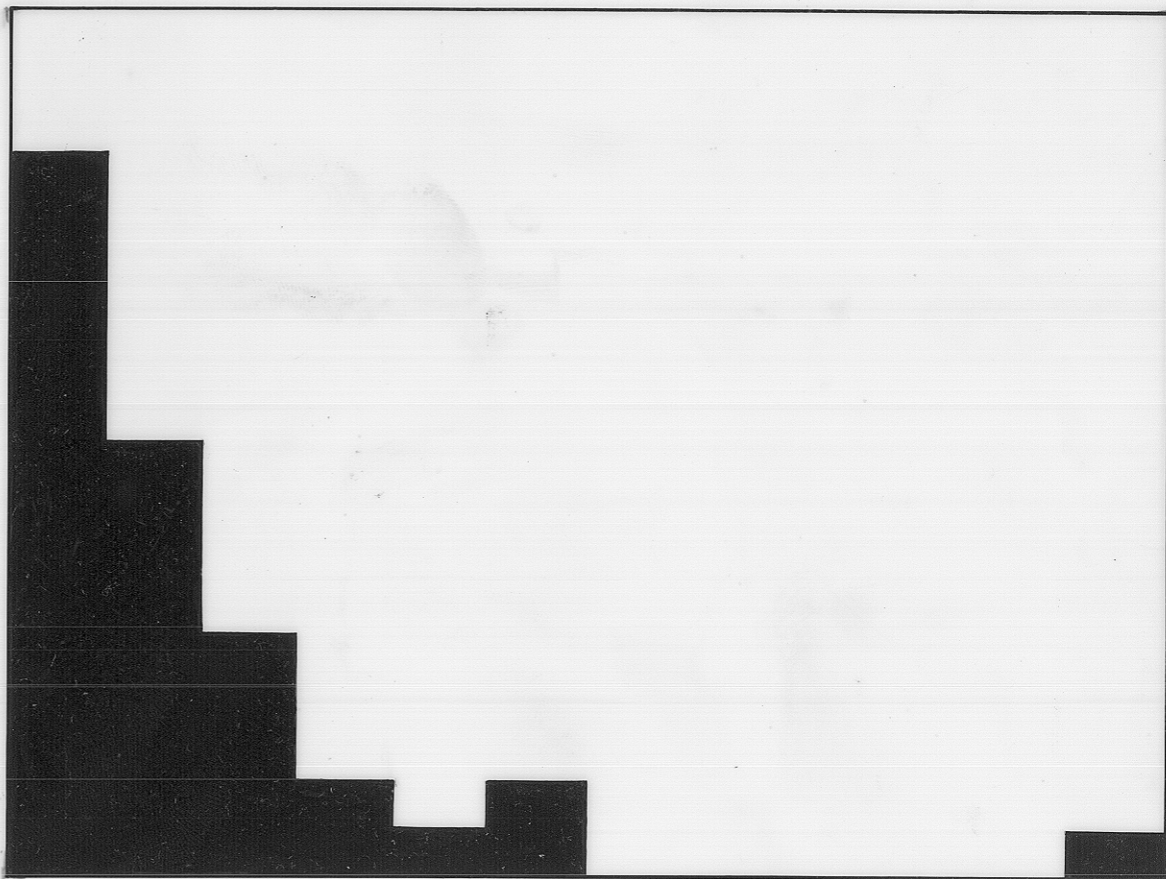
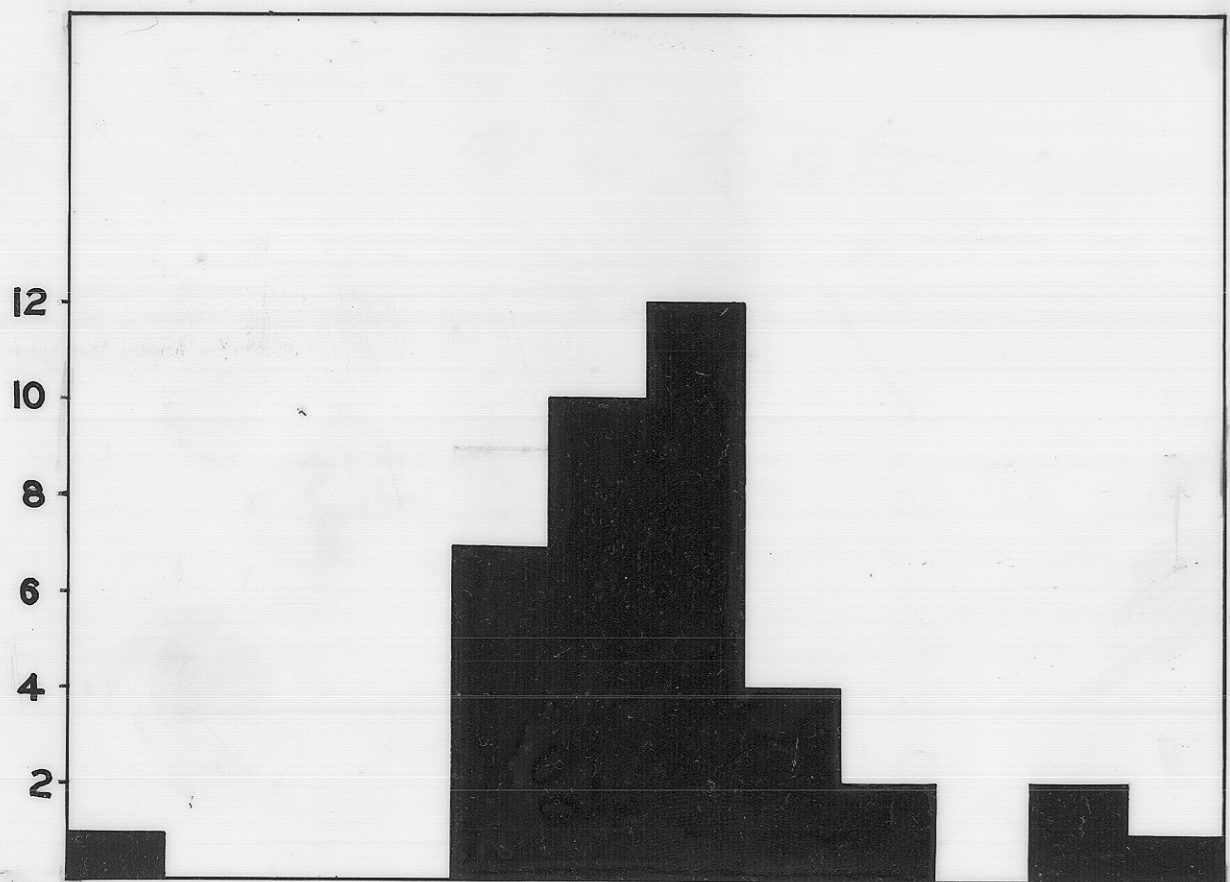


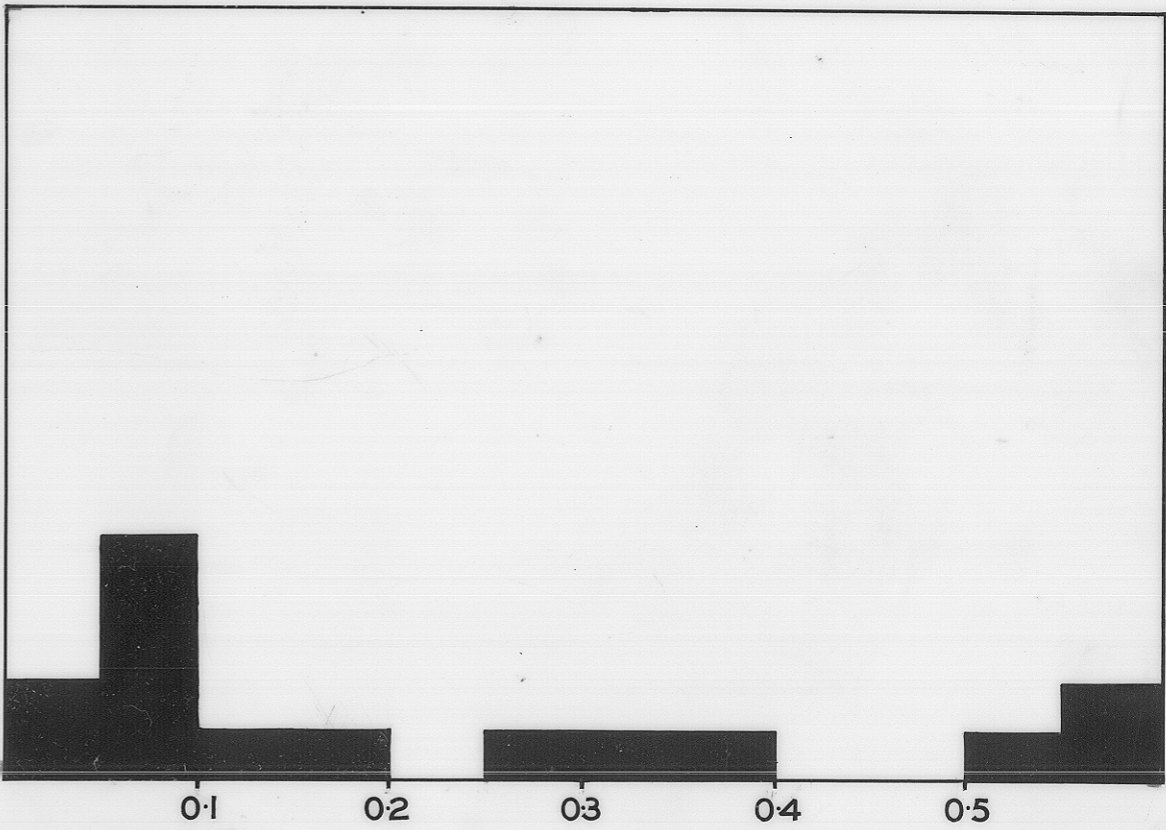
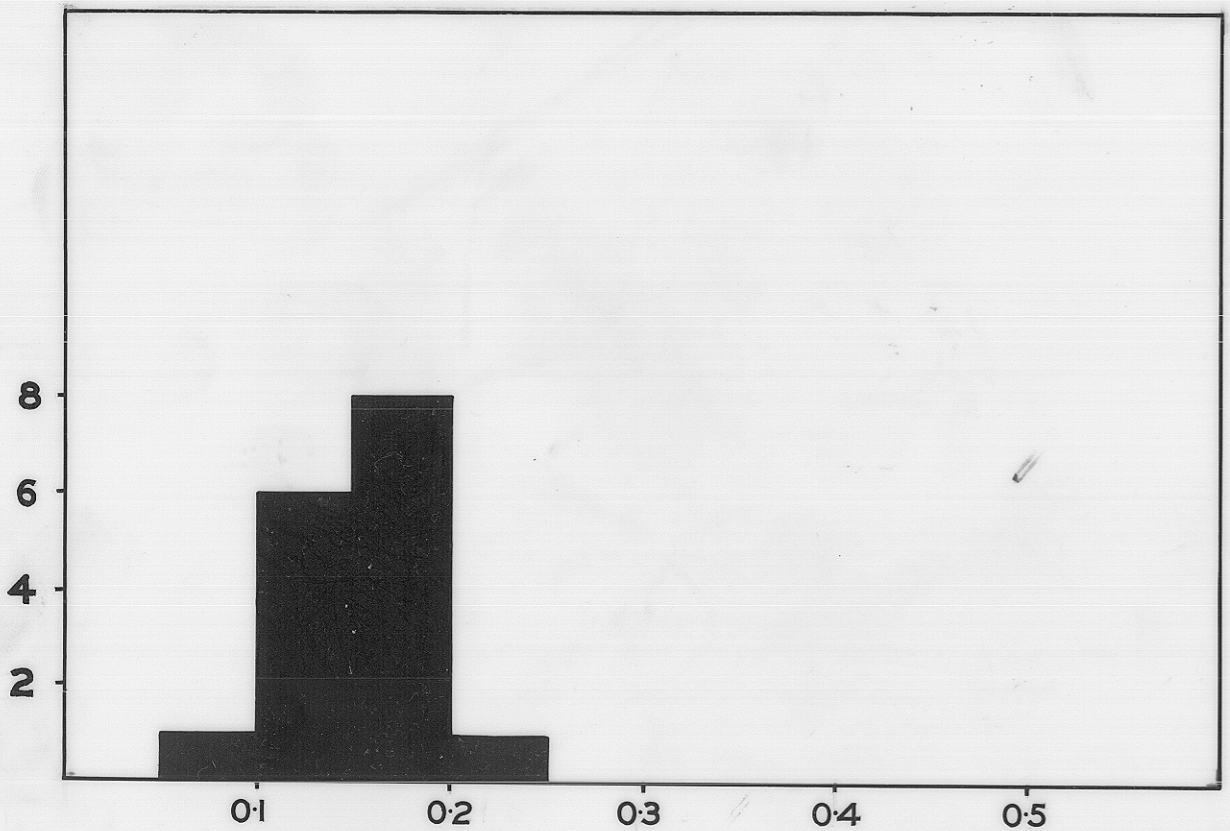
5 cm



CASSITERITE-SULPHIDE DEPOSITS



Ag-Pb-Zn FISSURE VEINS



BANDED Pb-Zn DEPOSITS

%CADMIUM IN SPHALERITE

%MANGANESE IN SPHALERITE

DISTRIBUTION OF CADMIUM AND MANGANESE
IN SPHALERITES - WEST COAST TASMANIA