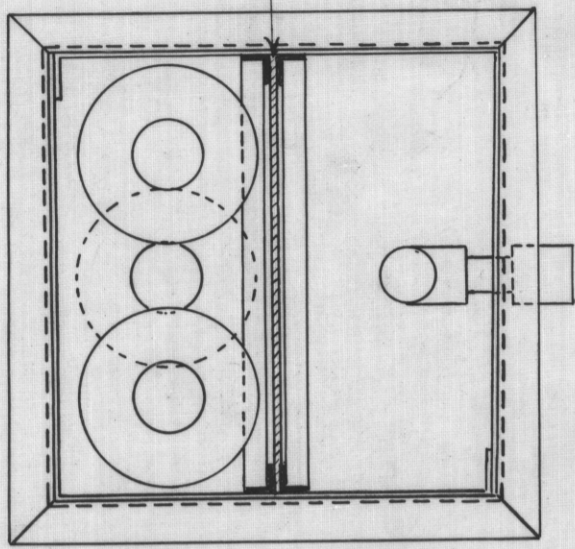


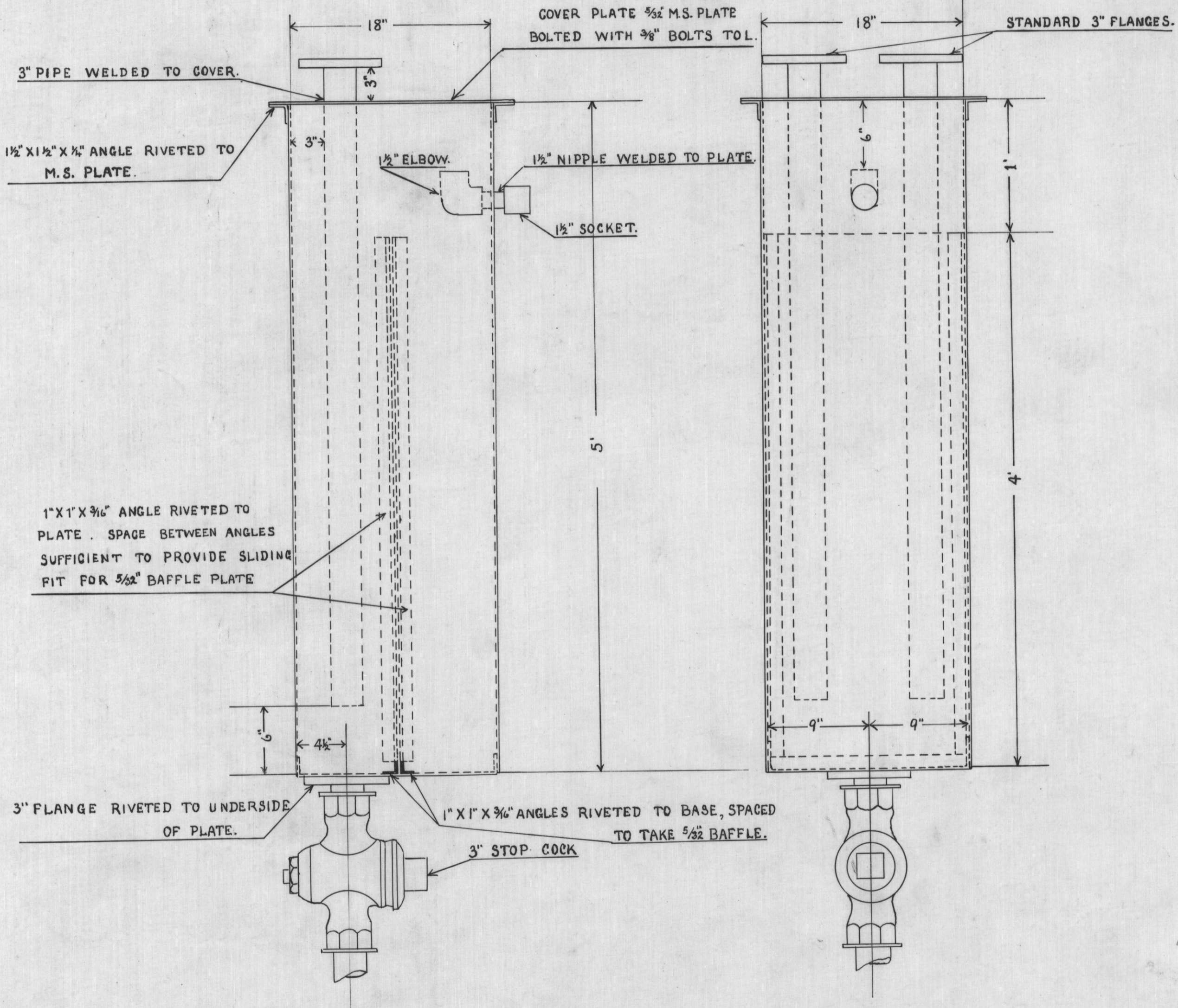
346/M

5 cm

5/32" M.S. BAFFLE PLATE CLOSE SLIDING FIT BETWEEN ANGLES.



TANK TO BE MADE OF 5/32" M.S. PLATE RIVETED WITH 3/8" RIVETS AT 1 3/4" PITCH. JOINTS TO BE MADE WATERTIGHT.



104

346

TASMANIAN GOVERNMENT MINES DEPARTMENT.

TASMANITE ASPHALT CONVERTER.

DETAIL DRAWING NO.3. SCALE 1 1/2 IN = 1 FT.

OIL AND SLUDGE SEPARATOR AND GAS SEAL,

MAKE 1

7-10-37.

A. Walker.

9-740 D