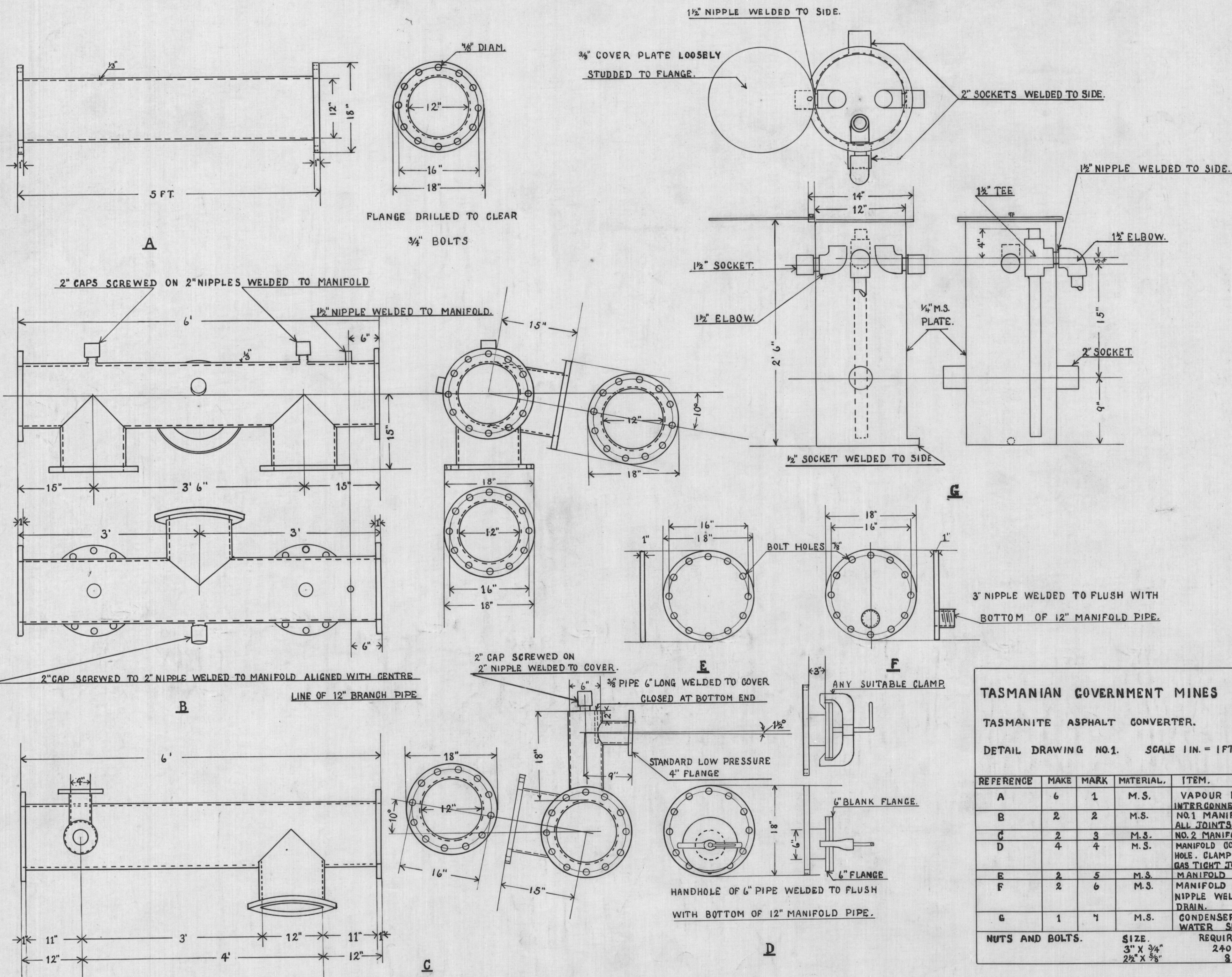


5 cm



TASMANIAN GOVERNMENT MINES DEPARTMENT.

TASMANITE ASPHALT CONVERTER. 21-9-37.

DETAIL DRAWING NO.1. SCALE 1 IN. = 1 FT. & 1/2 IN. = 1 FT.

A. Walker

REFERENCE	MAKE	MARK	MATERIAL.	ITEM.
A	6	1	M.S.	VAPOUR RISE PIPES & MANIFOLD INTERCONNECTING PIPES. STANDARD 12" NO.1 MANIFOLD. STANDARD 12" PIPE
B	2	2	M.S.	ALL JOINTS WELDED OIL & GAS TIGHT
C	2	3	M.S.	NO.2 MANIFOLD WELDED AS ABOVE
D	4	4	M.S.	MANIFOLD COVER FLANGE WITH CLEANING HOLE. CLAMP TO PROVIDE LOW PRESSURE GAS TIGHT JOINT BETWEEN FLANGES.
E	2	5	M.S.	MANIFOLD BLANK FLANGE
F	2	6	M.S.	MANIFOLD COVER FLANGE WITH 3" NIPPLE WELDED TO ACT AS MANIFOLD DRAIN.
G	1	7	M.S.	CONDENSER GAS SEAL POT & OIL & WATER SEPARATOR.

NUTS AND BOLTS. SIZE. REQUIRED.

3" X 3/4" 240

2 1/2" X 5/8" 8

347/M

9-740E