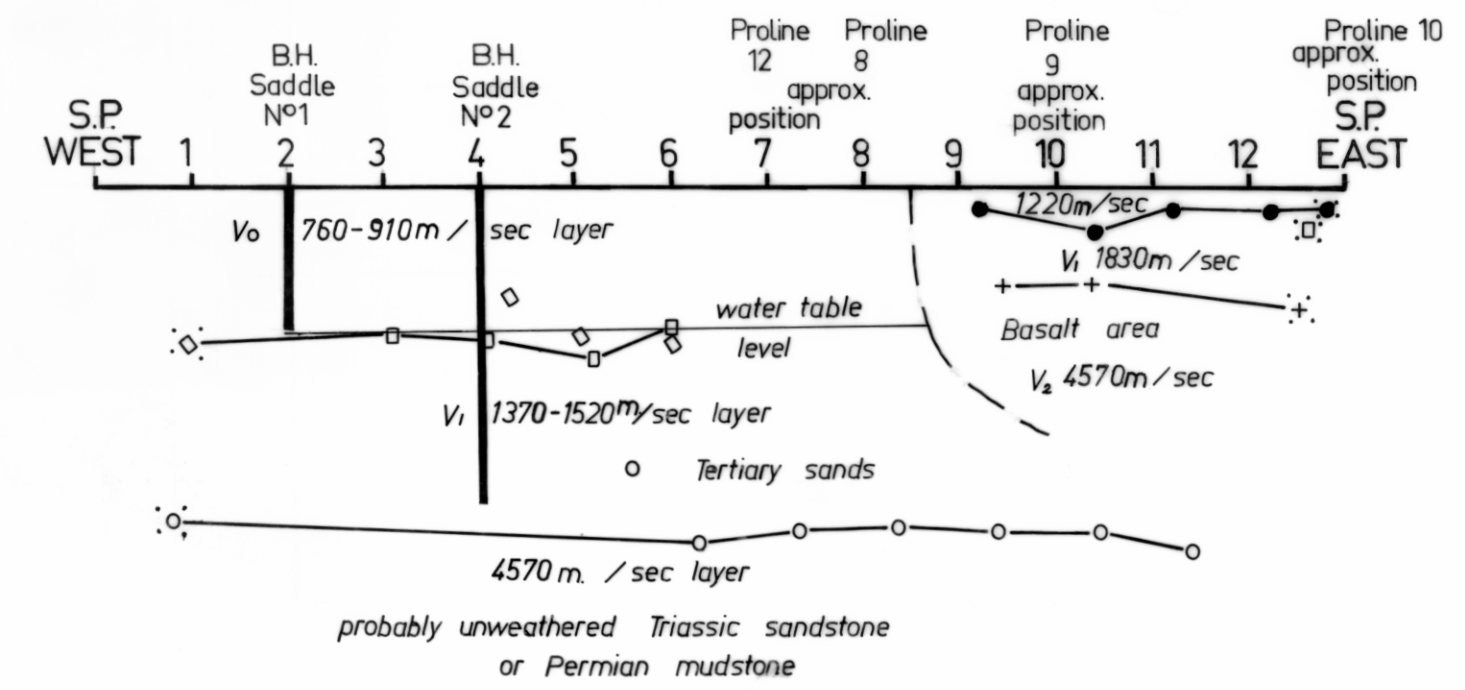
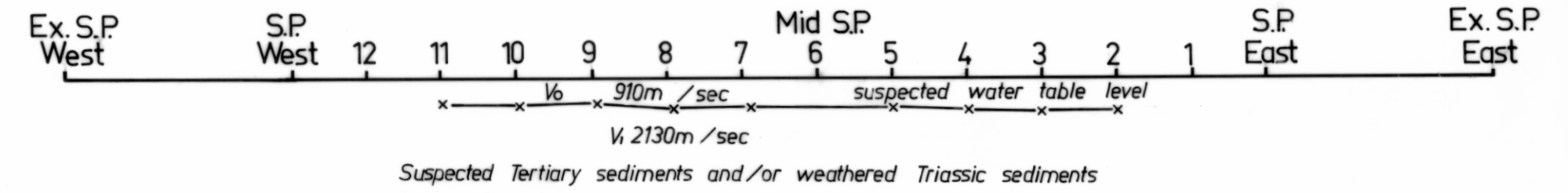


3472

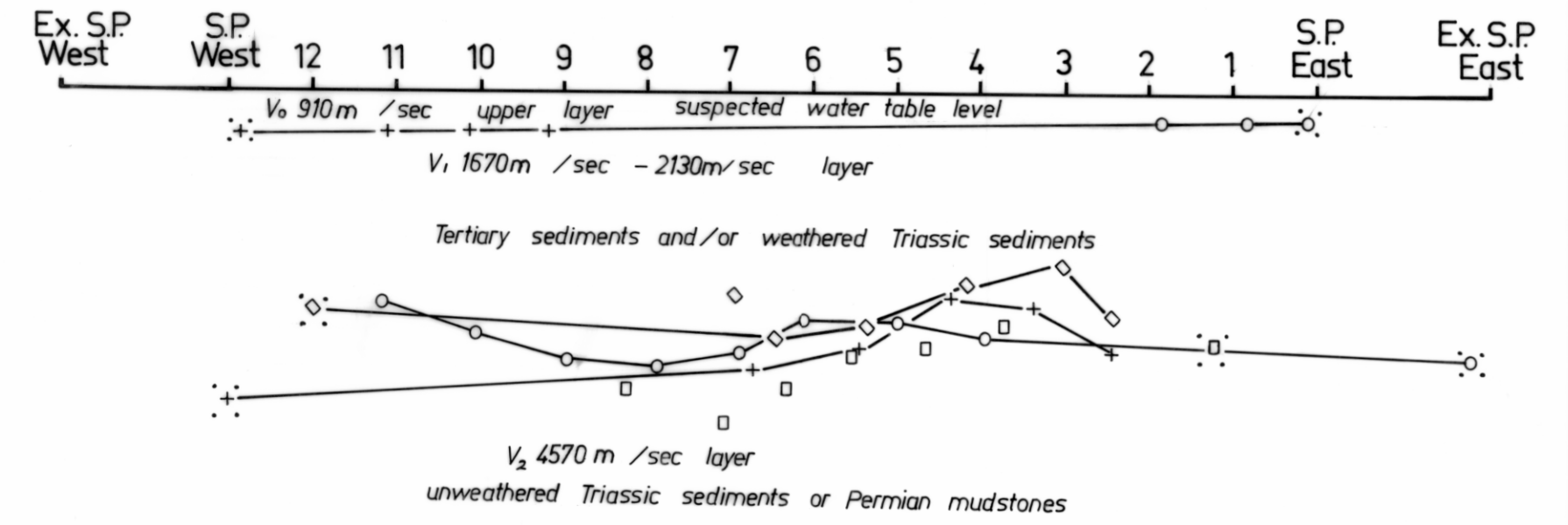
SADDLE N°1 MADDOCK'S FARM



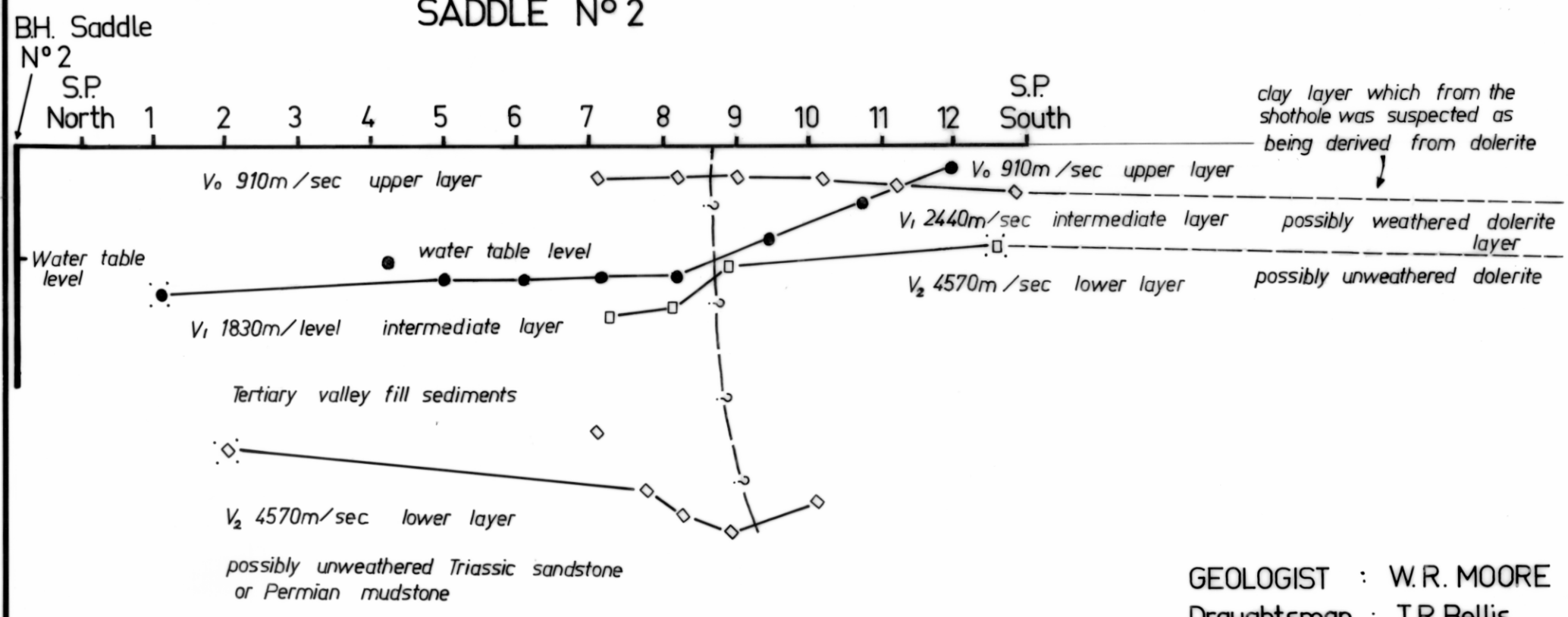
HOWDEN ROAD N°1 N.W. BAY



HOWDEN ROAD N°2 N.W. BAY

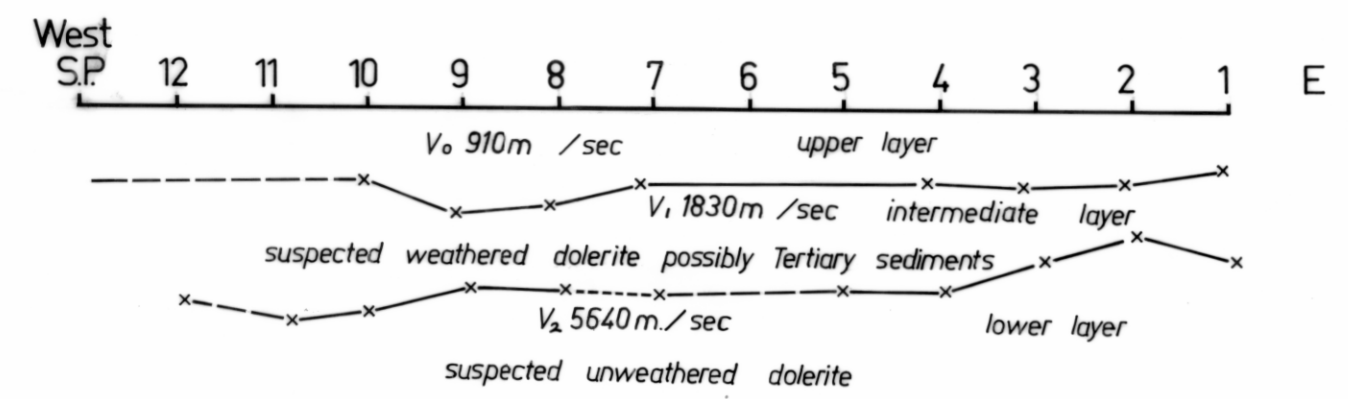


SADDLE N°2

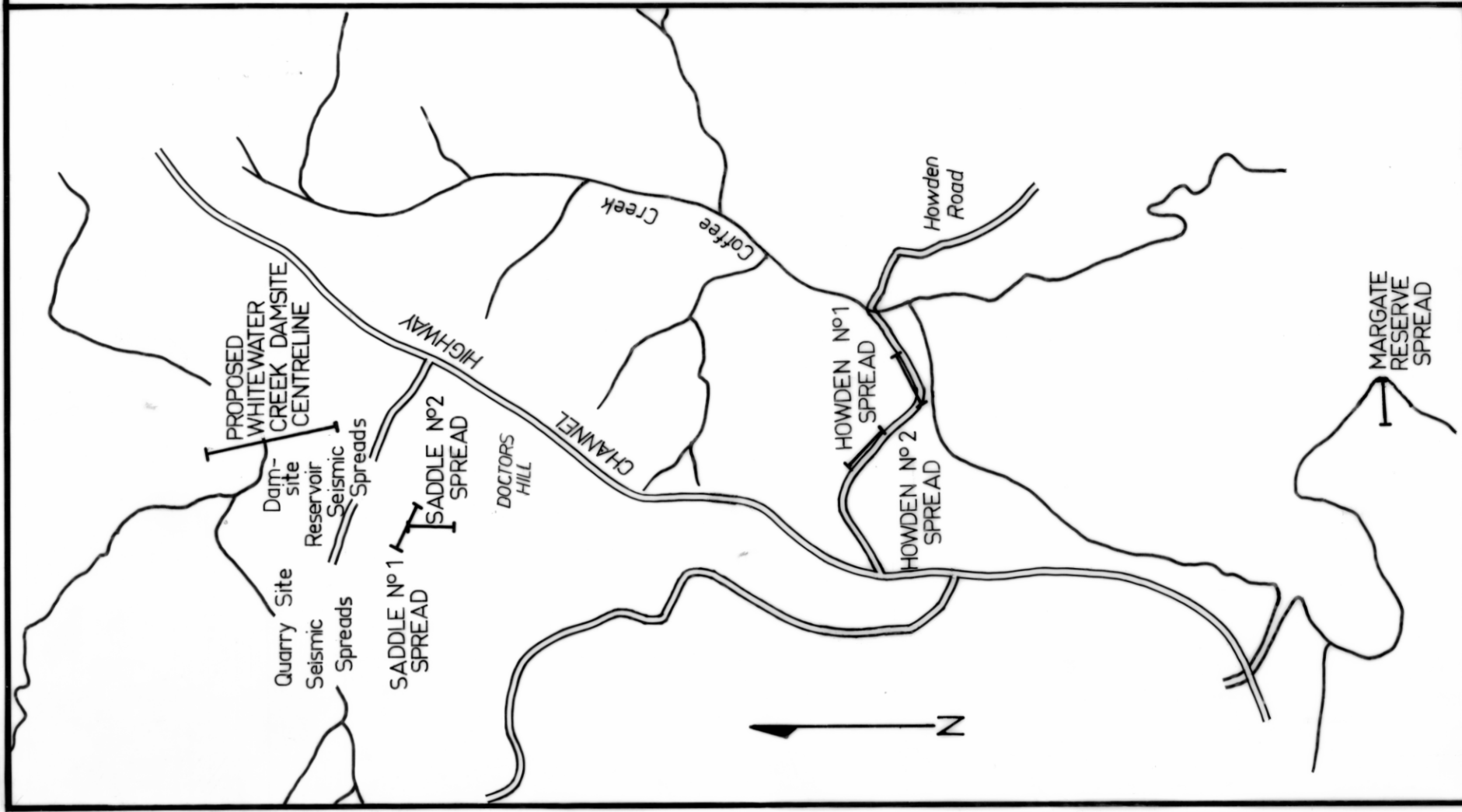


GEOLOGIST : W.R. MOORE  
Draughtsman : T.R. Bellis

MARGATE RESERVE

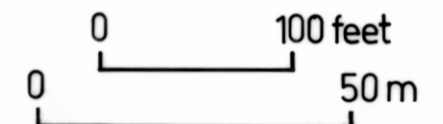


WHITEWATER CREEK BURIED RIVER VALLEY SEISMIC SURVEY



- 1 2 Geophone position and number
- S.P. Shot point position
- ∴ Calculated shot point depth
- ○ Depth of velocity layer calculated by Time-delay method
- × × × × Depth of velocity layer calculated by Time-depth methods

SEISMIC FIRED : July 1970  
CALCULATED : Sept. 1970  
DRAWN : July 1971



3472-82

5 cm

280mm

REDUCE A-B TO CD