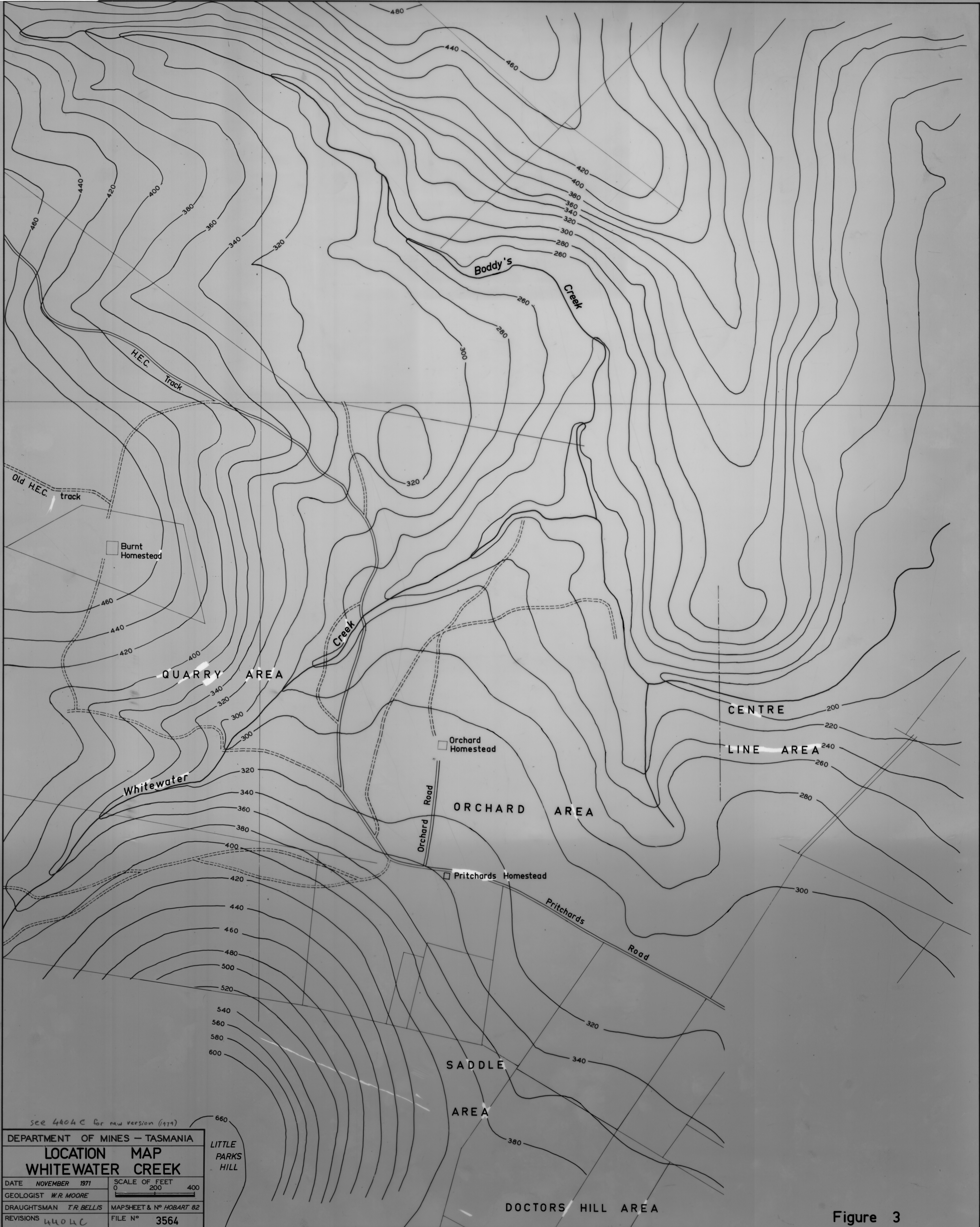


5 cm



see 4404C for new version (1979)

DEPARTMENT OF MINES - TASMANIA	
LOCATION MAP	
WHITEWATER CREEK	
DATE NOVEMBER 1971	SCALE OF FEET 0 200 400
GEOLOGIST W.R. MOORE	
DRAUGHTSMAN T.R. BELLIS	MAPSHEET & NO HOBART 82
REVISIONS 4404C	FILE NO 3564

LITTLE PARKS HILL

DOCTORS HILL AREA

Figure 3