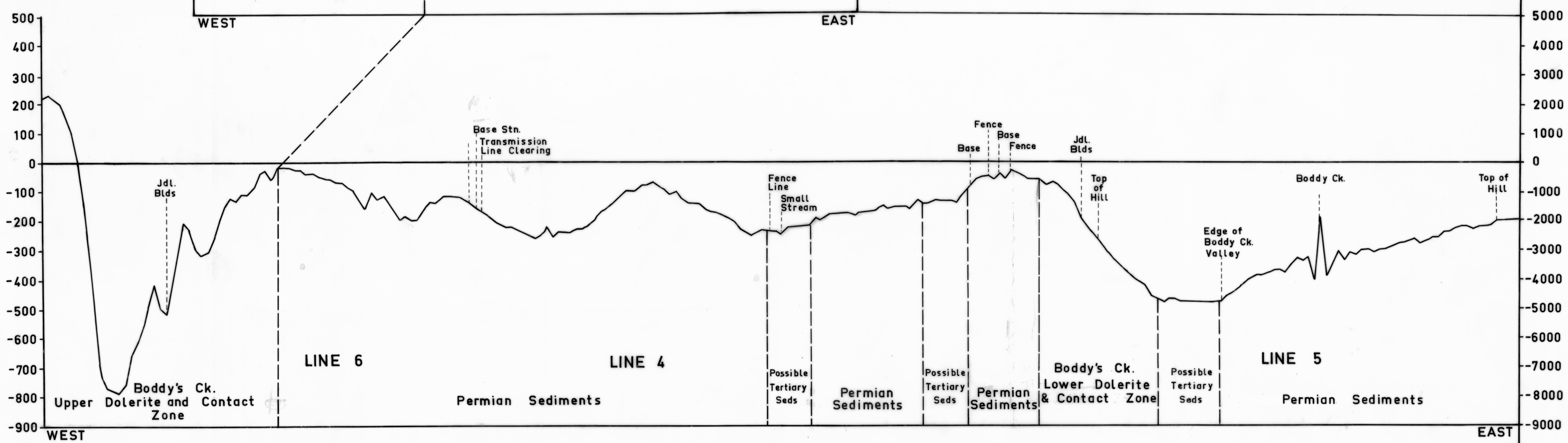
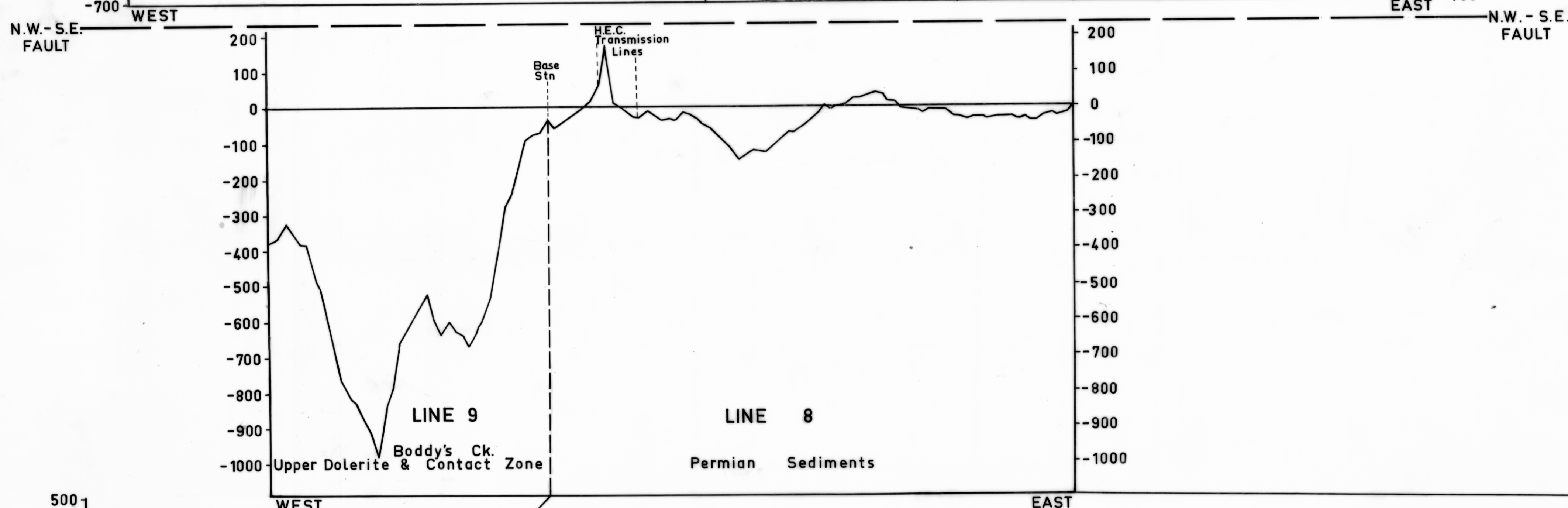
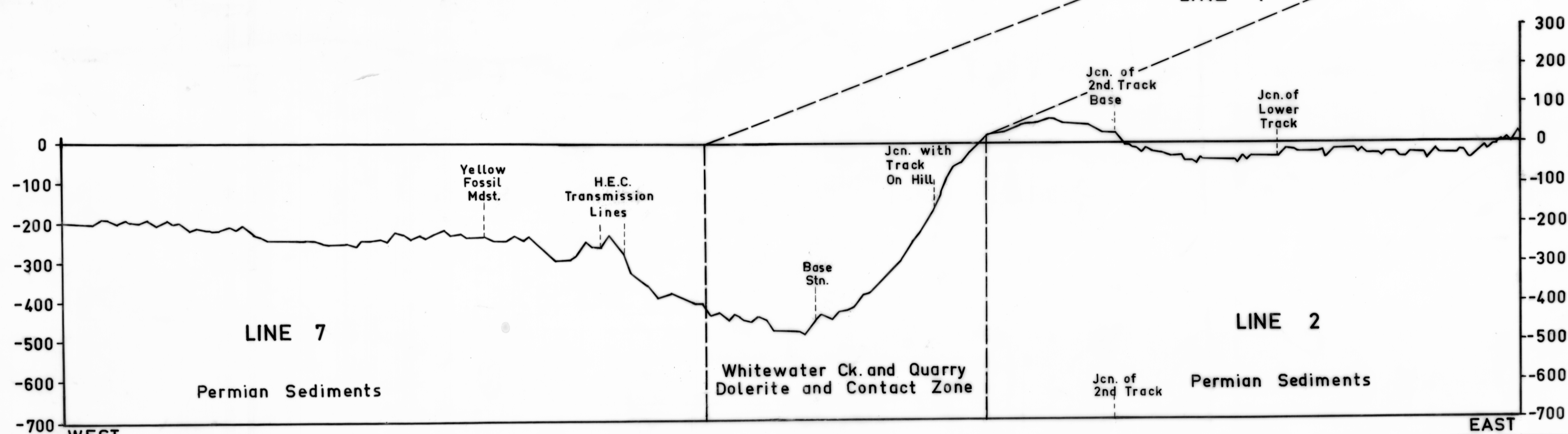
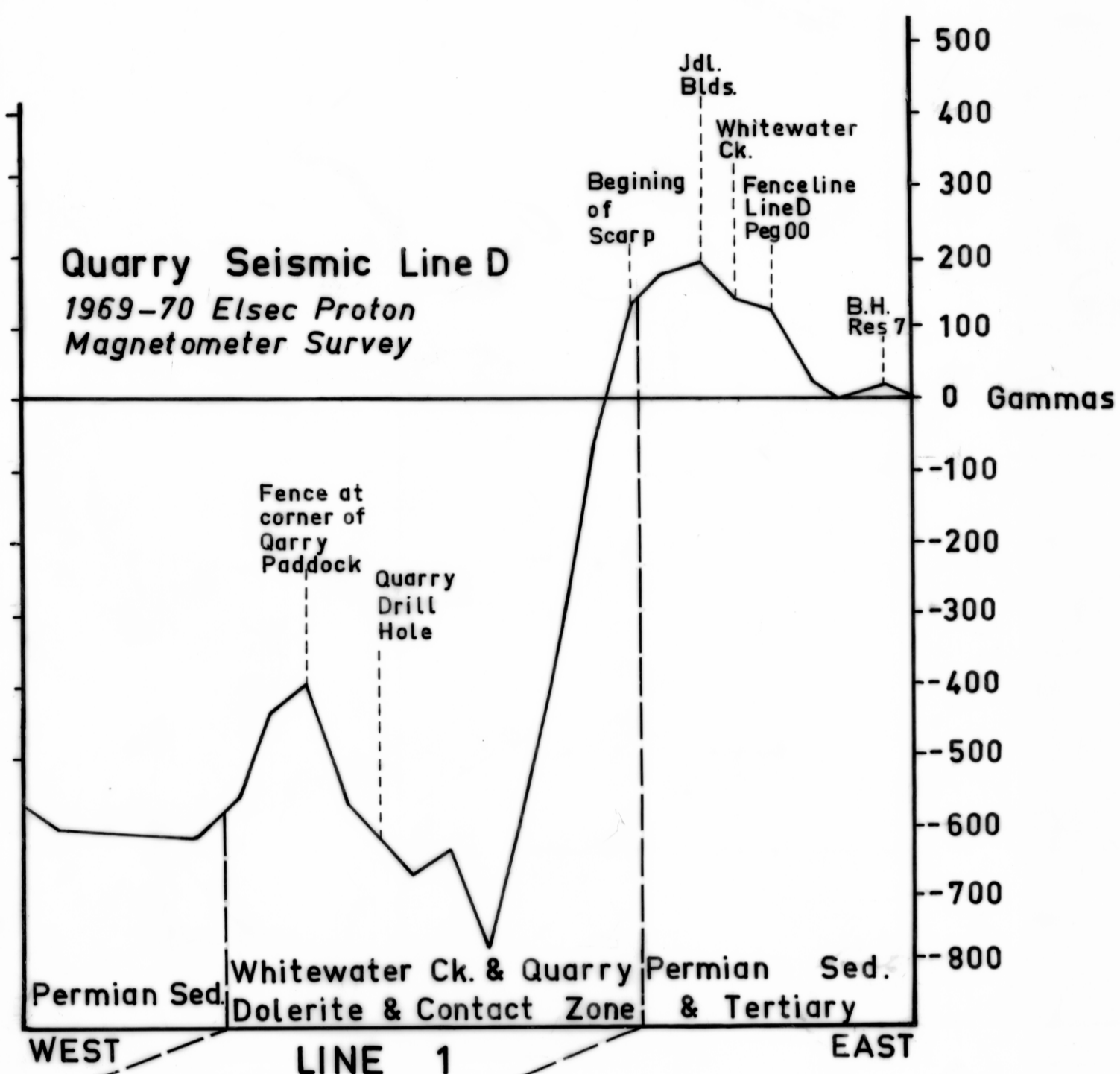
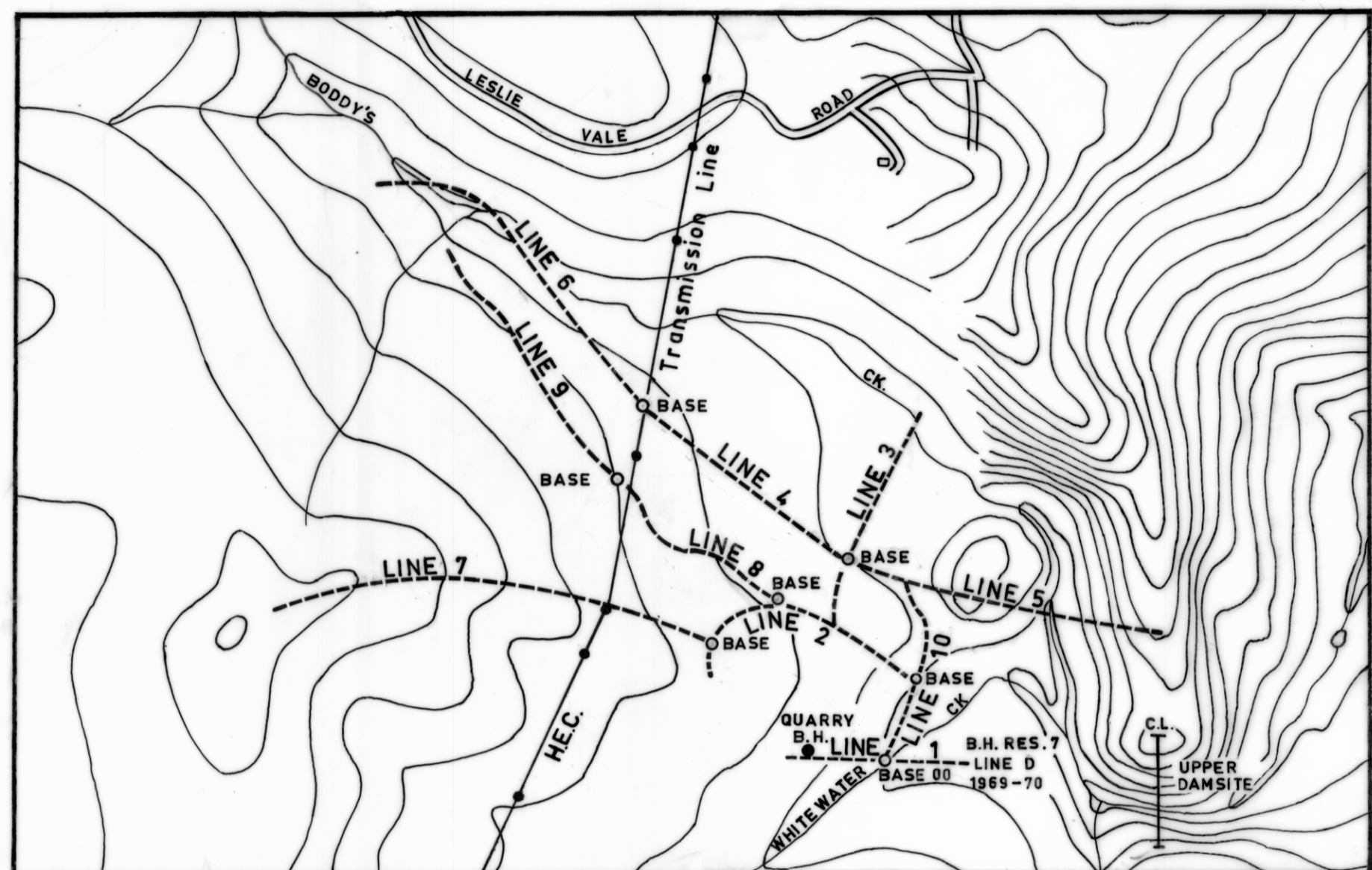
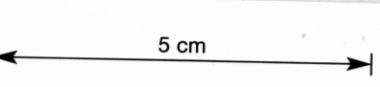


FIG. 9A



EAST - WEST FLUXGATE MAGNETOMETER TRAVERSES  
RESERVOIR AREA - UPPER DAMSITE  
WHITEWATER CK. KINGSTON

Horizontal Distance Scale 1" = 100 feet  
Vertical Instrument Scale 1" = 100 gammas

GEOLOGIST : W.R. MOORE  
Draftsman : P.J. Donnelly

Traversed Oct. 1971

Drawn Dec. 1971

See also 4404 R & S for UPDATE