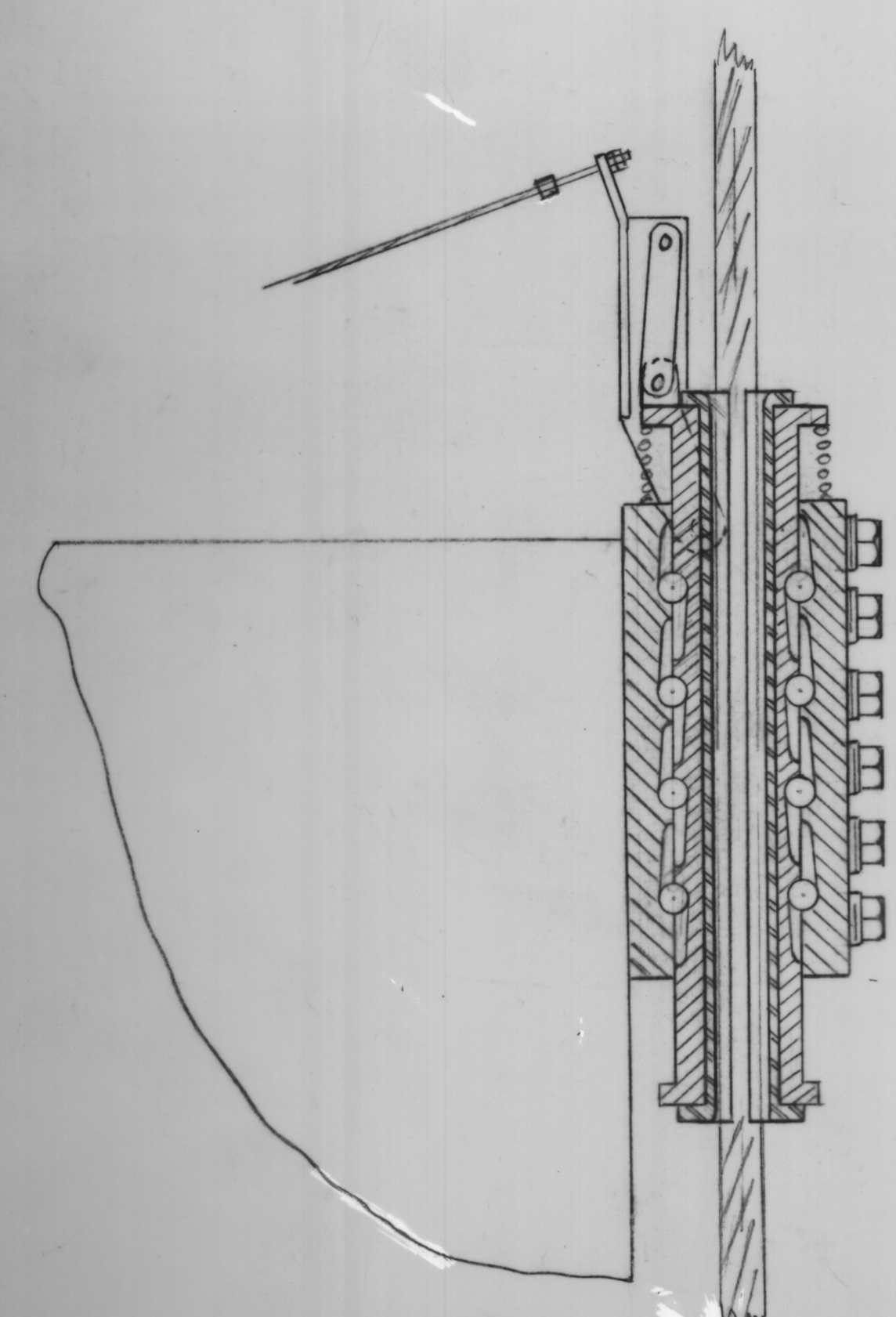
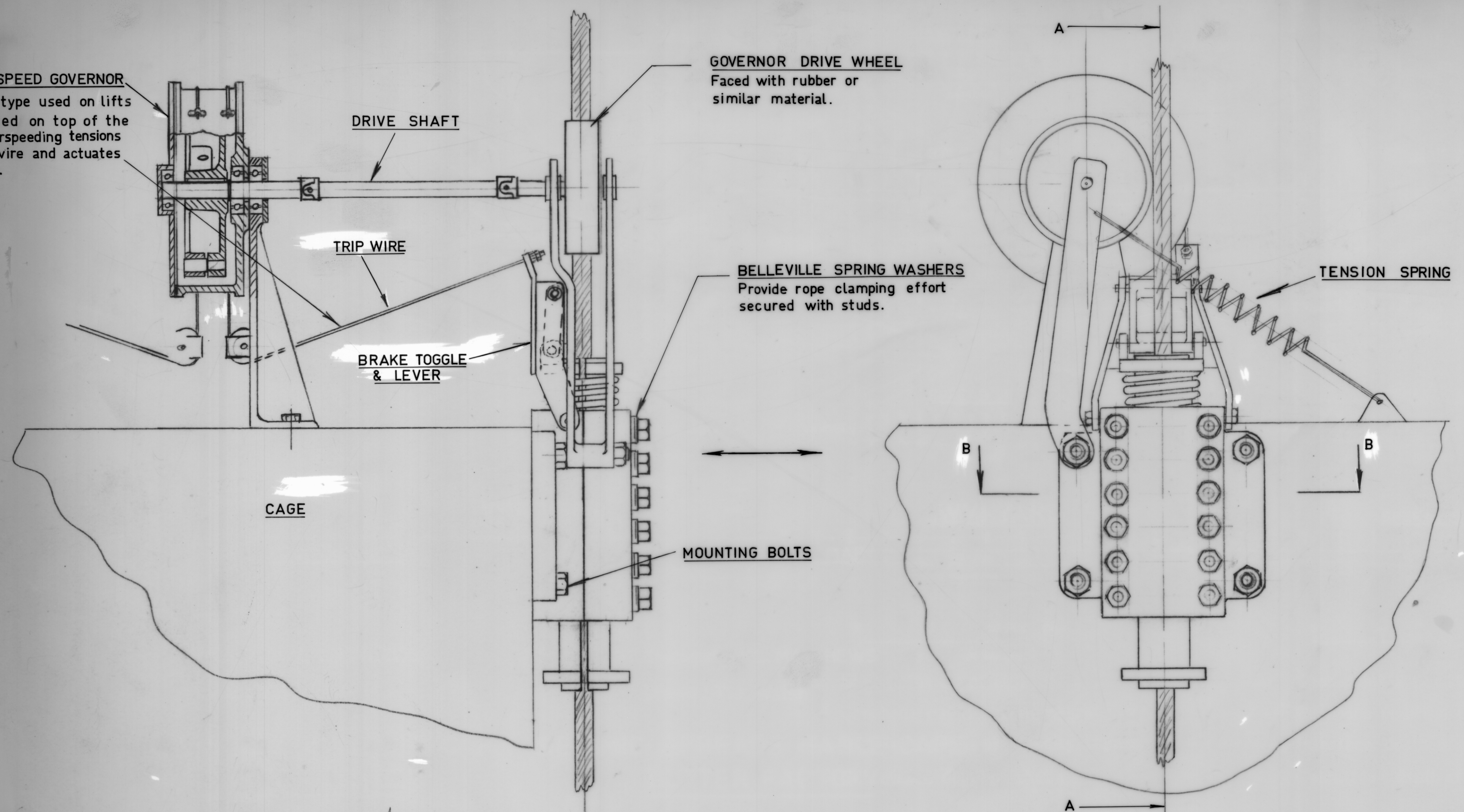
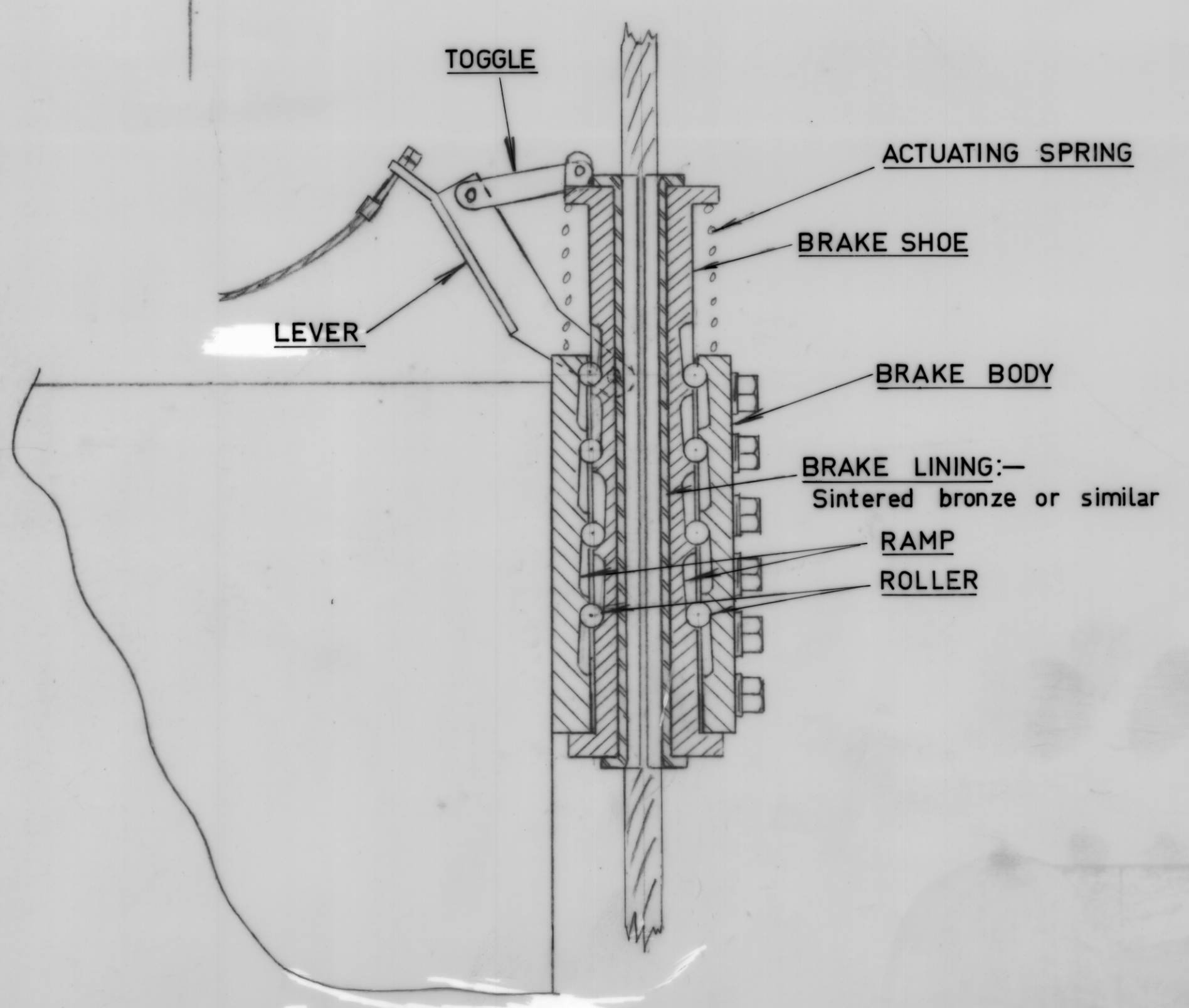


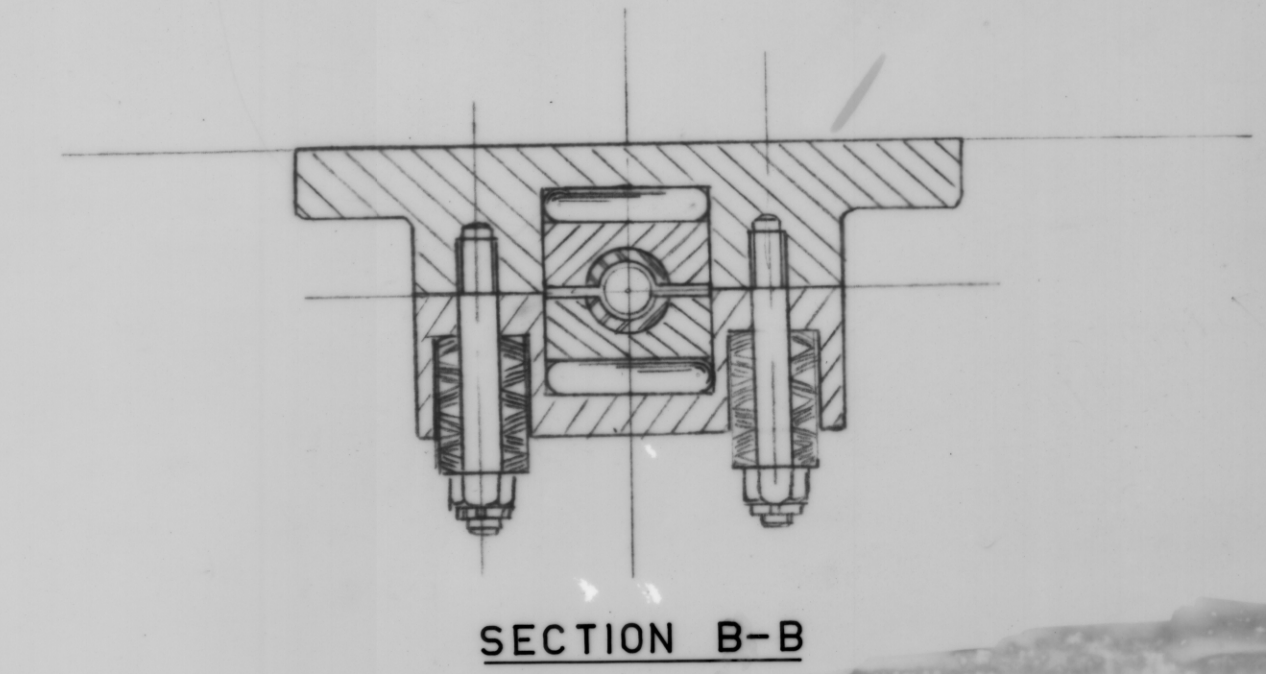
**OVERSPEED GOVERNOR**  
 Similar to type used on lifts but mounted on top of the cage. Overspeeding tensions the trip wire and actuates the brake.



SECTION A-A  
 Brake Free



SECTION A-A  
 Brake Applied



SECTION B-B

(PRELIMINARY DRAFT)

DEPARTMENT OF MINES — TASMANIA	
CAGE ARRESTOR BRAKE. PROPOSAL FOR ROPE APPLICATION	
DATE: 11 JAN. 1972	SCALE Approx. 3" to 1 Foot
ENGINEER: W.C. HODGSON	
DRAWN: T.J. Walsh	
FILE No.	3575A