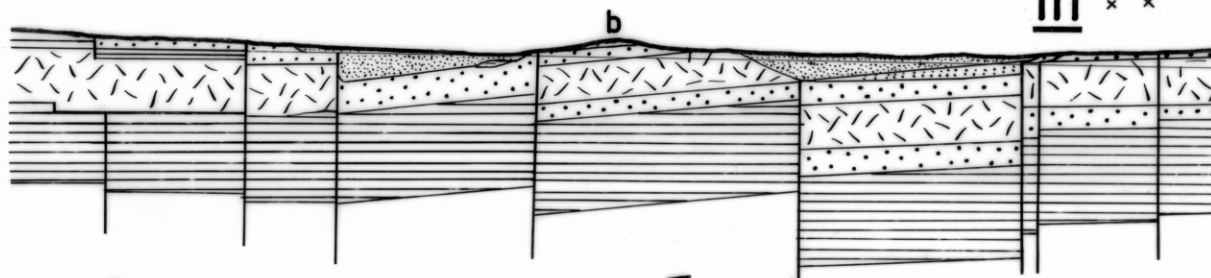
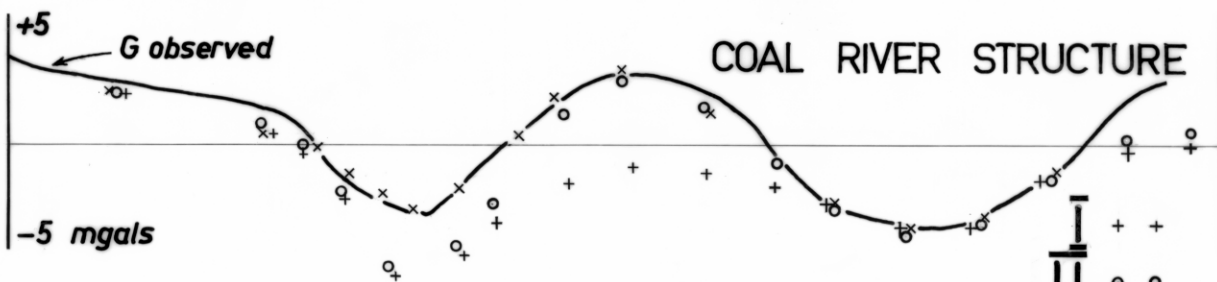


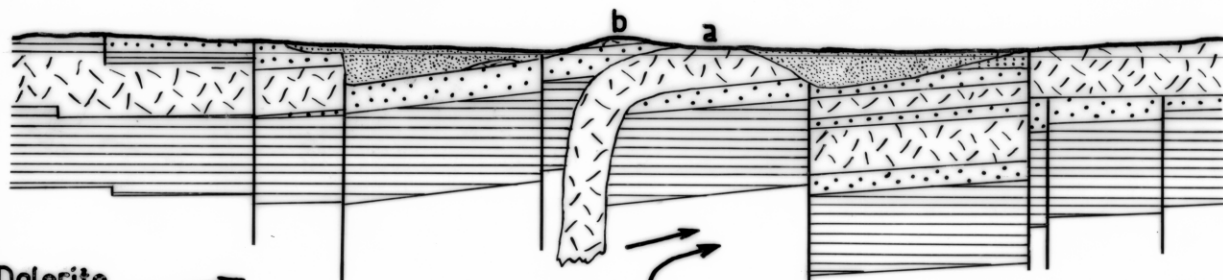
# RICHMOND TERTIARY BASINS



Dolerite form

Tertiary basin form determined by refraction seismic and drilling (Leaman, 1971)

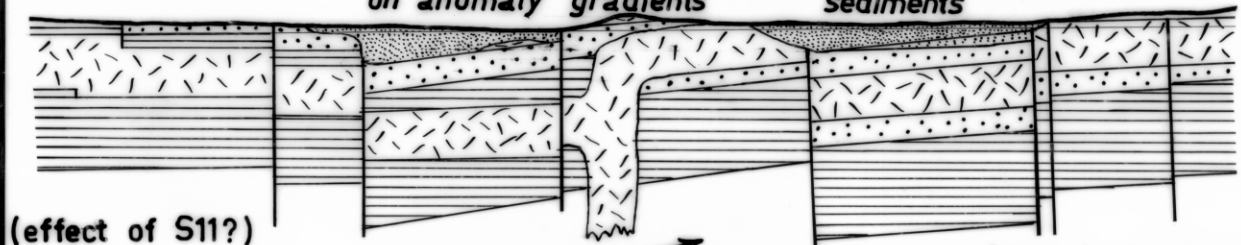
Tertiary sediments at least 205m. thick



Dolerite form

dyke must be minimum of 300 metres wide. Probably 400m on anomaly gradients

using a, b ; form inconsistent across sections ; fit by increasing thickness of sediments



(effect of S11?)

Anomaly increased by nearby feeder (S.E.)

5 cm

3606

646