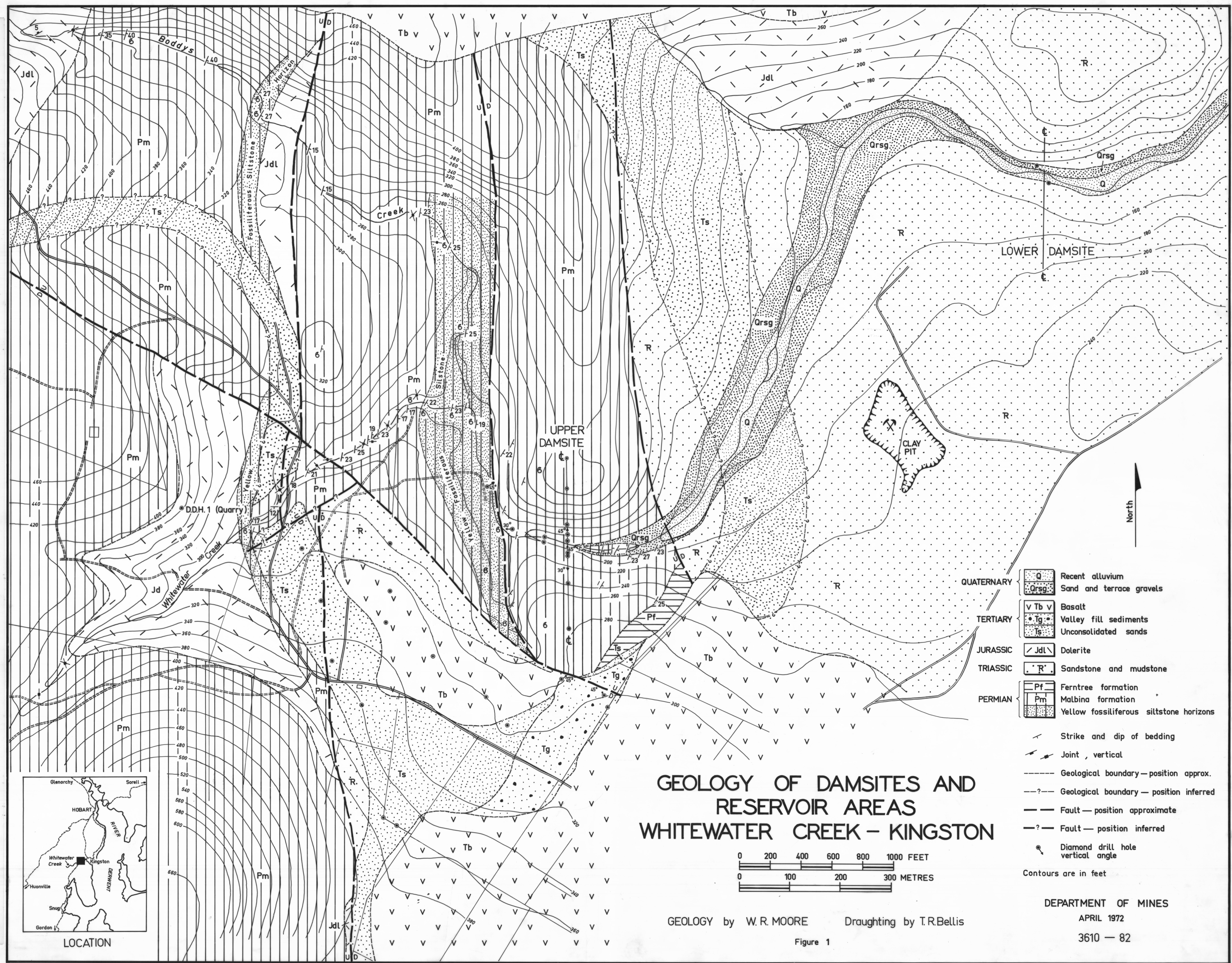
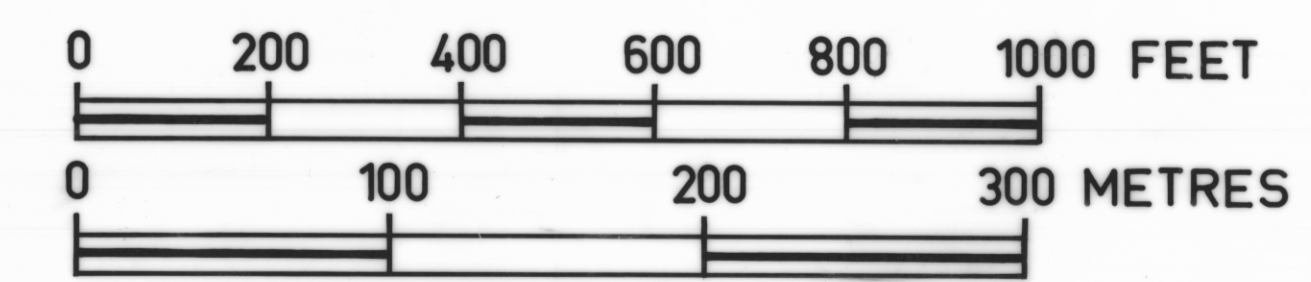


3610 52
 5 cm



GEOLOGY OF DAMSITES AND RESERVOIR AREAS WHITEWATER CREEK - KINGSTON



- QUATERNARY
 - Q Recent alluvium
 - Qrsg Sand and terrace gravels
- TERTIARY
 - V Tb v Basalt
 - Tg Valley fill sediments
 - Ts Unconsolidated sands
- JURASSIC
 - Jdl Dolerite
- TRIASSIC
 - R Sandstone and mudstone
- PERMIAN
 - Pf Ferntree formation
 - Pm Malbina formation
 - Yellow fossiliferous siltstone horizons

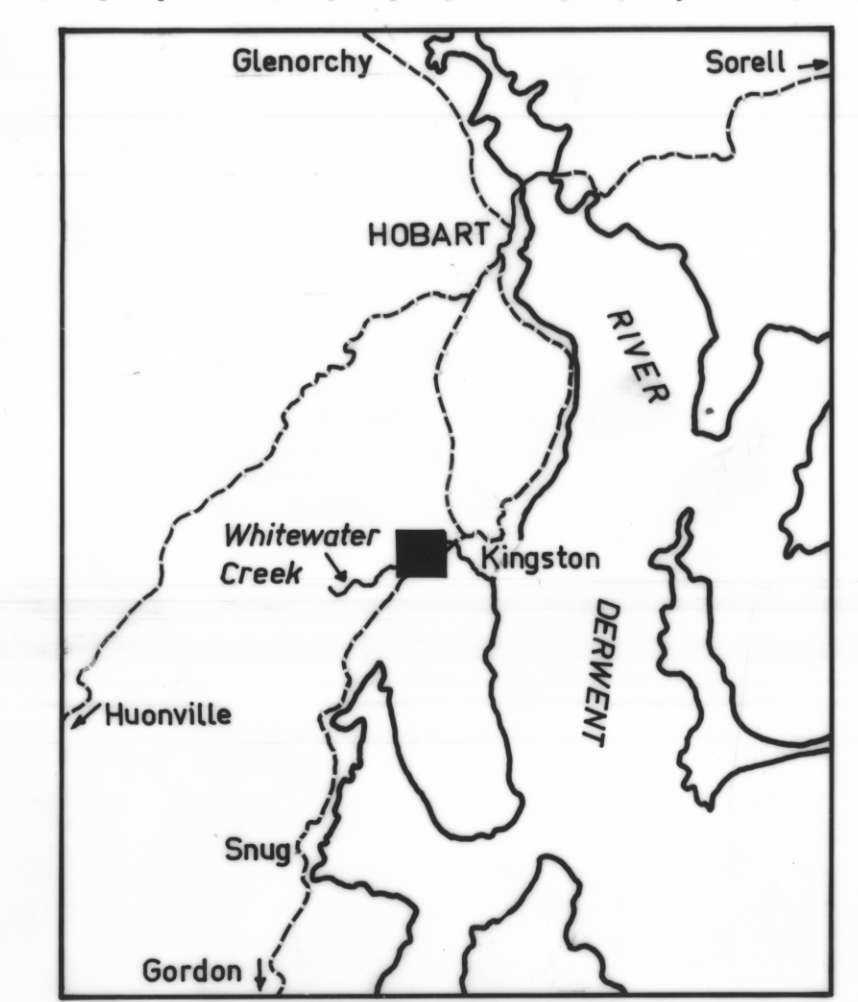
- Strike and dip of bedding
- Joint, vertical
- Geological boundary - position approx.
- Geological boundary - position inferred
- Fault - position approximate
- Fault - position inferred
- Diamond drill hole vertical angle
- Contours are in feet

GEOLOGY by W. R. MOORE Draughting by T. R. Bellis

Figure 1

DEPARTMENT OF MINES
 APRIL 1972
 3610 - 82

REDRAFTED 1979



LOCATION