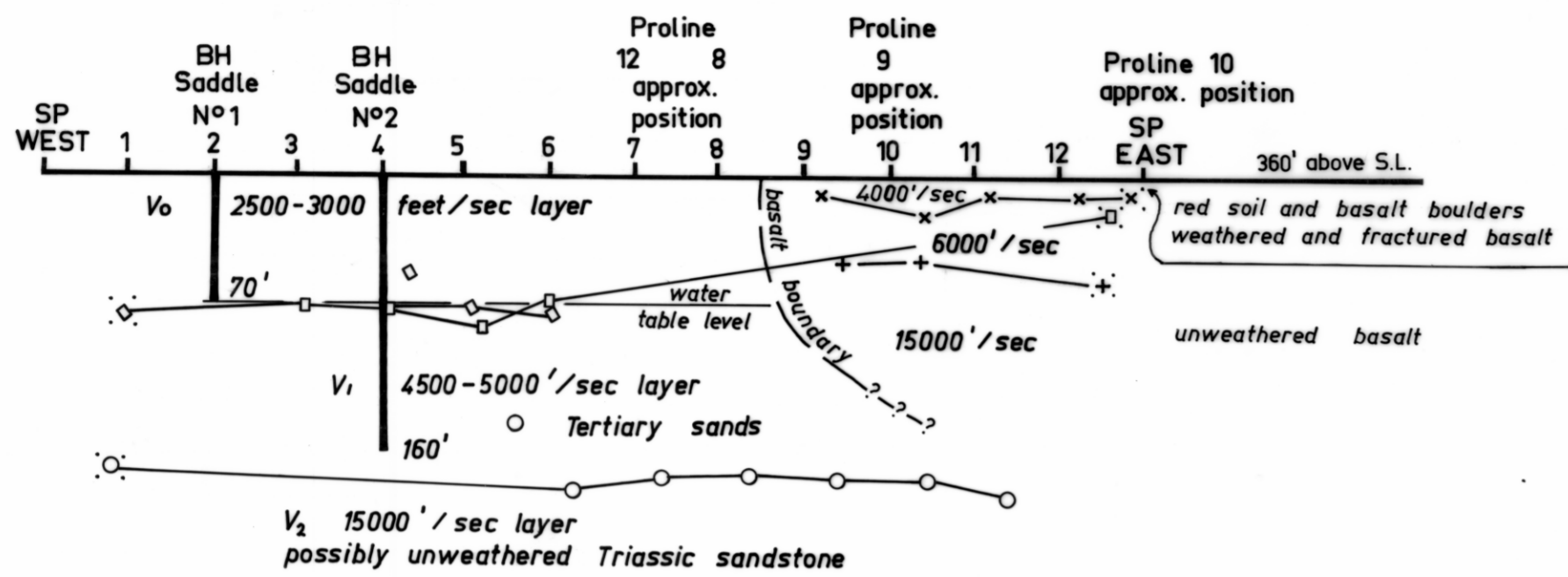
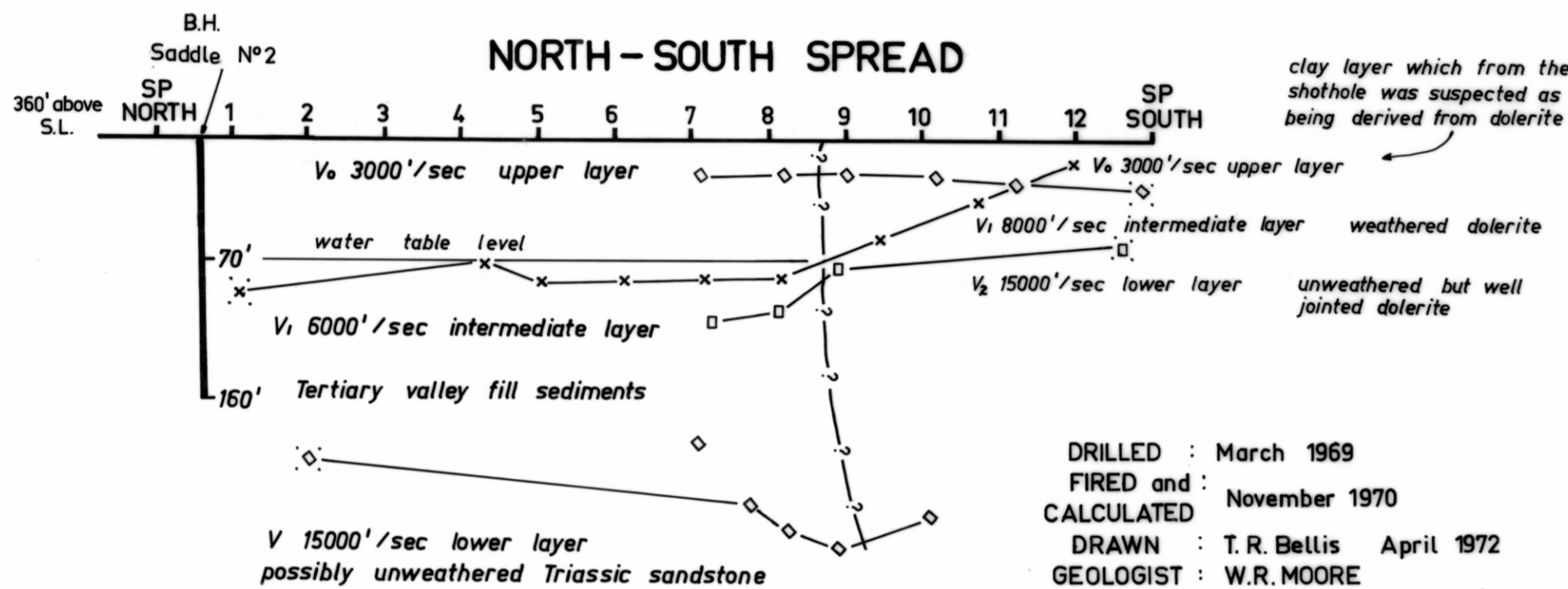


5 cm

SADDLE AREA DOCTORS HILL and LITTLE PARKS HILL EAST - WEST SPREAD

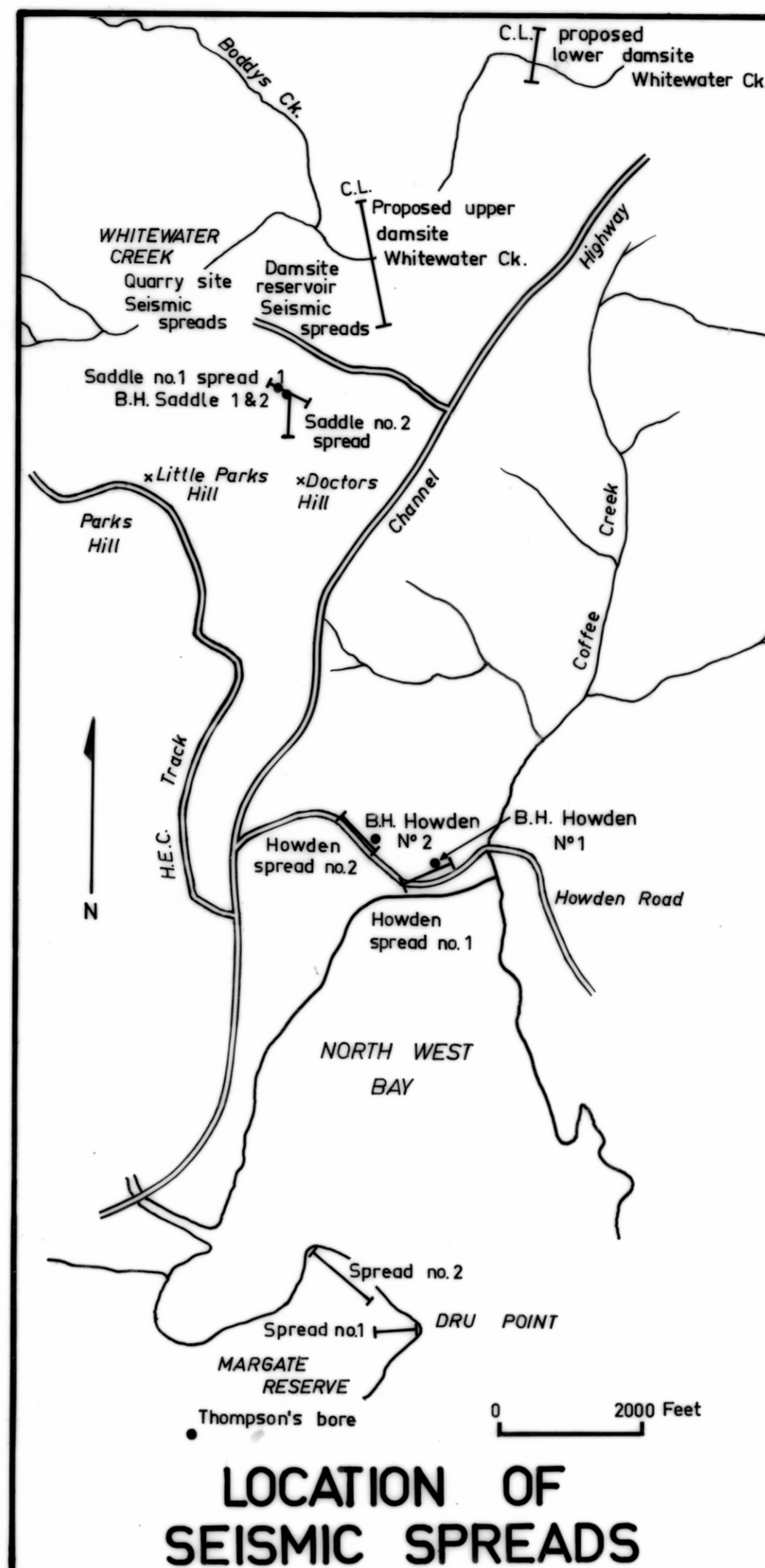


NORTH - SOUTH SPREAD



DRILLED : March 1969
FIRED and : November 1970
CALCULATED :
DRAWN : T.R. Bellis April 1972
GEOLOGIST : W.R. MOORE

0 100 Feet



SEISMIC SURVEY AND DRILLING NORTH WEST BAY

- 1 2 Gephone position and number
- S.P. Shot point position
- + Calculated shot point depth
- Depth of velocity layer calculated by Time - delay method
- Depth of velocity layer calculated by Time - depth methods

GEOLOGIST : W.R. MOORE

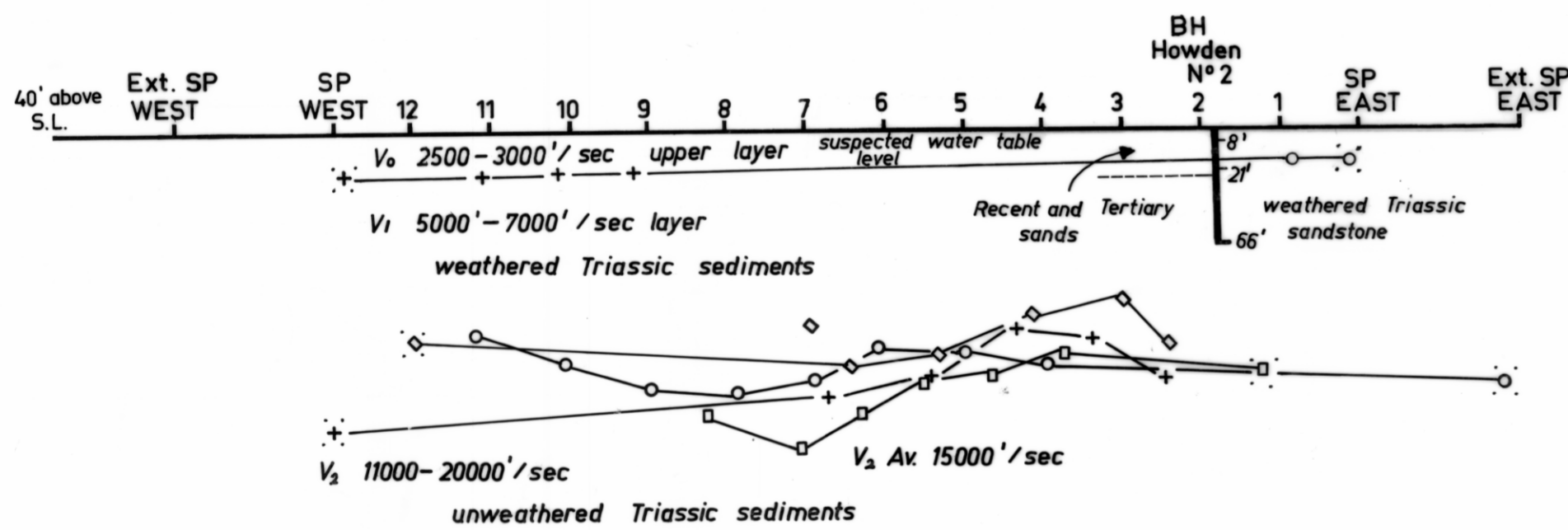
Draughtsman : T.R. Bellis

April 1972

FIGURE 8

See 4404 AE, 4404 AF, 4404 AG for UPDATE (1972)

SPREAD N° 2

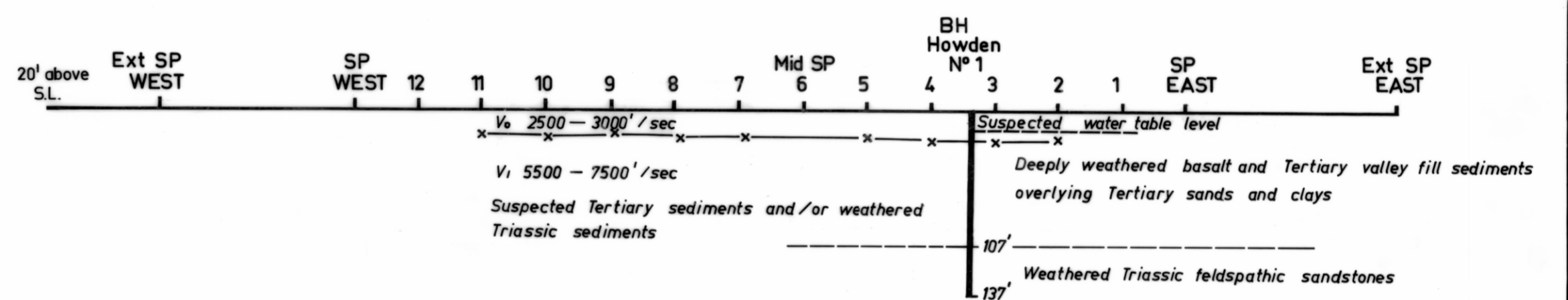


DRILLED : August - September 1971
FIRED and : December 1970
CALCULATED :
DRAWN : T.R. Bellis April 1972
GEOLOGIST : W.R. MOORE

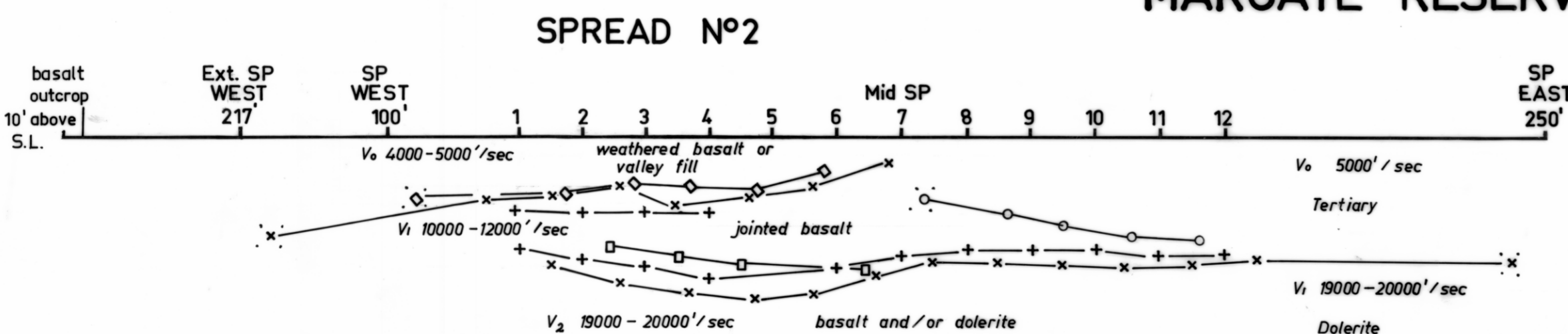
0 100 Feet

HOWDEN ROAD - NORTH WEST BAY

SPREAD N° 1



MARGATE RESERVE - DRU POINT



FIRED and : Nov. 1970 and Aug 1971
CALCULATED :
DRAWN : T.R. Bellis April 1972
GEOLOGIST : W.R. MOORE

0 100 Feet

SPREAD N° 1

