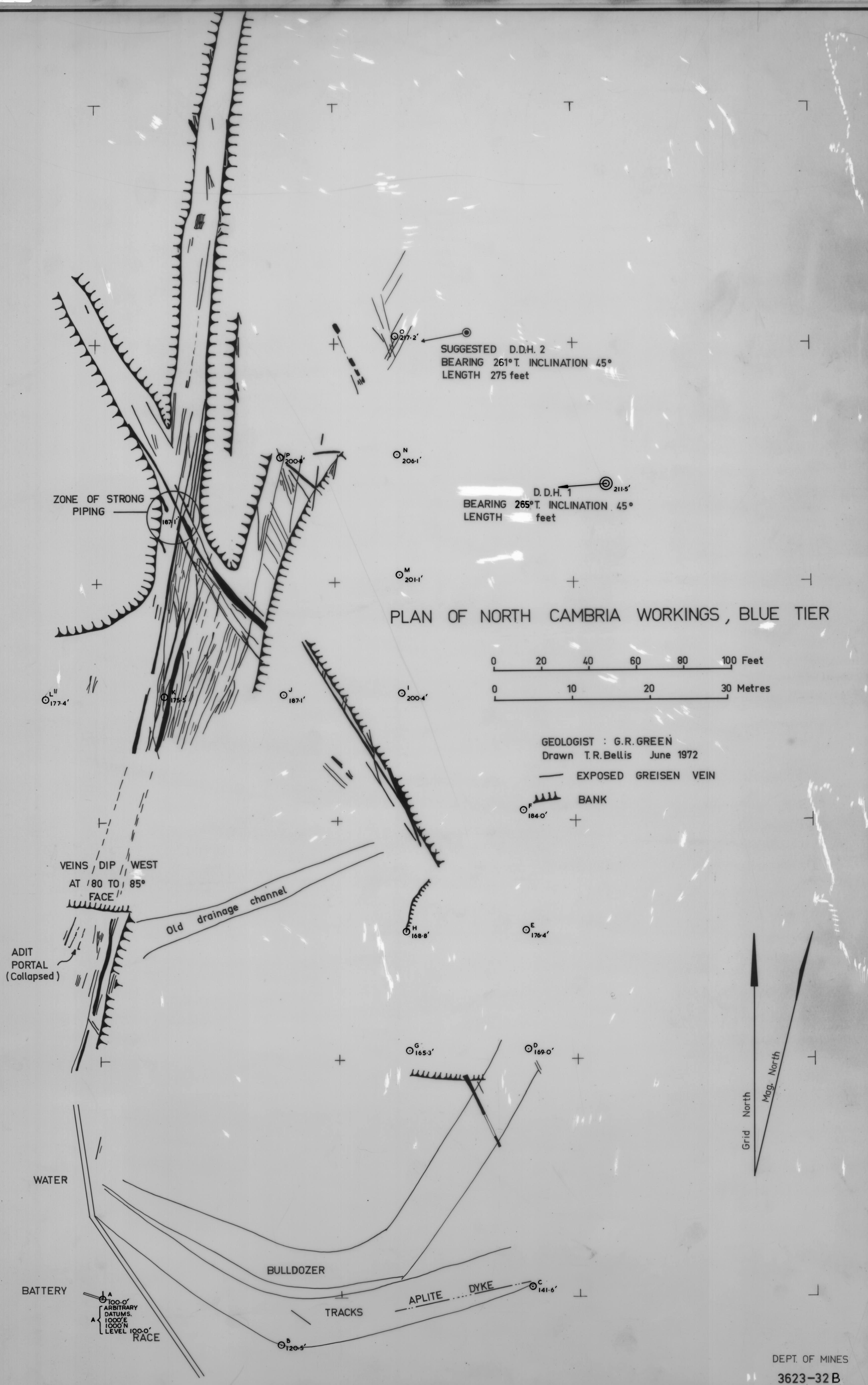
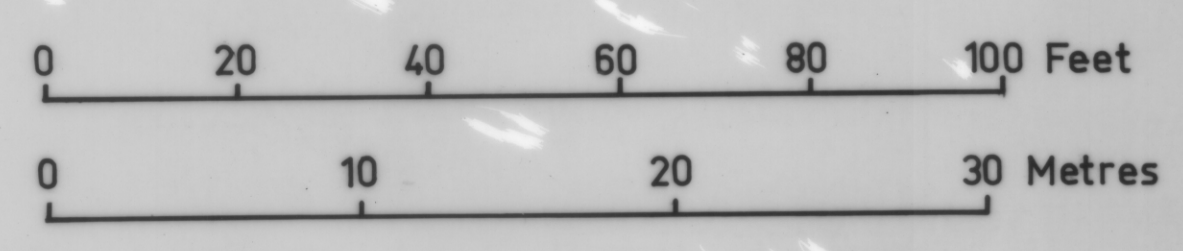


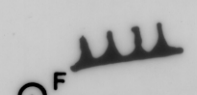
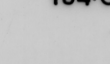
5 cm



PLAN OF NORTH CAMBRIA WORKINGS, BLUE TIER



GEOLOGIST : G.R. GREEN  
Drawn T.R. Bellis June 1972

— EXPOSED GREISEN VEIN  
 BANK  


VEINS, DIP WEST  
AT 80 TO 85°  
FACE

ADIT PORTAL  
(Collapsed)

Old drainage channel

WATER

BULLDOZER

TRACKS

APLITE DYKE

BATTERY

A  
 100.0' ARBITRARY DATUMS.  
 1000' E  
 1000' N  
 LEVEL 100.0' RACE

