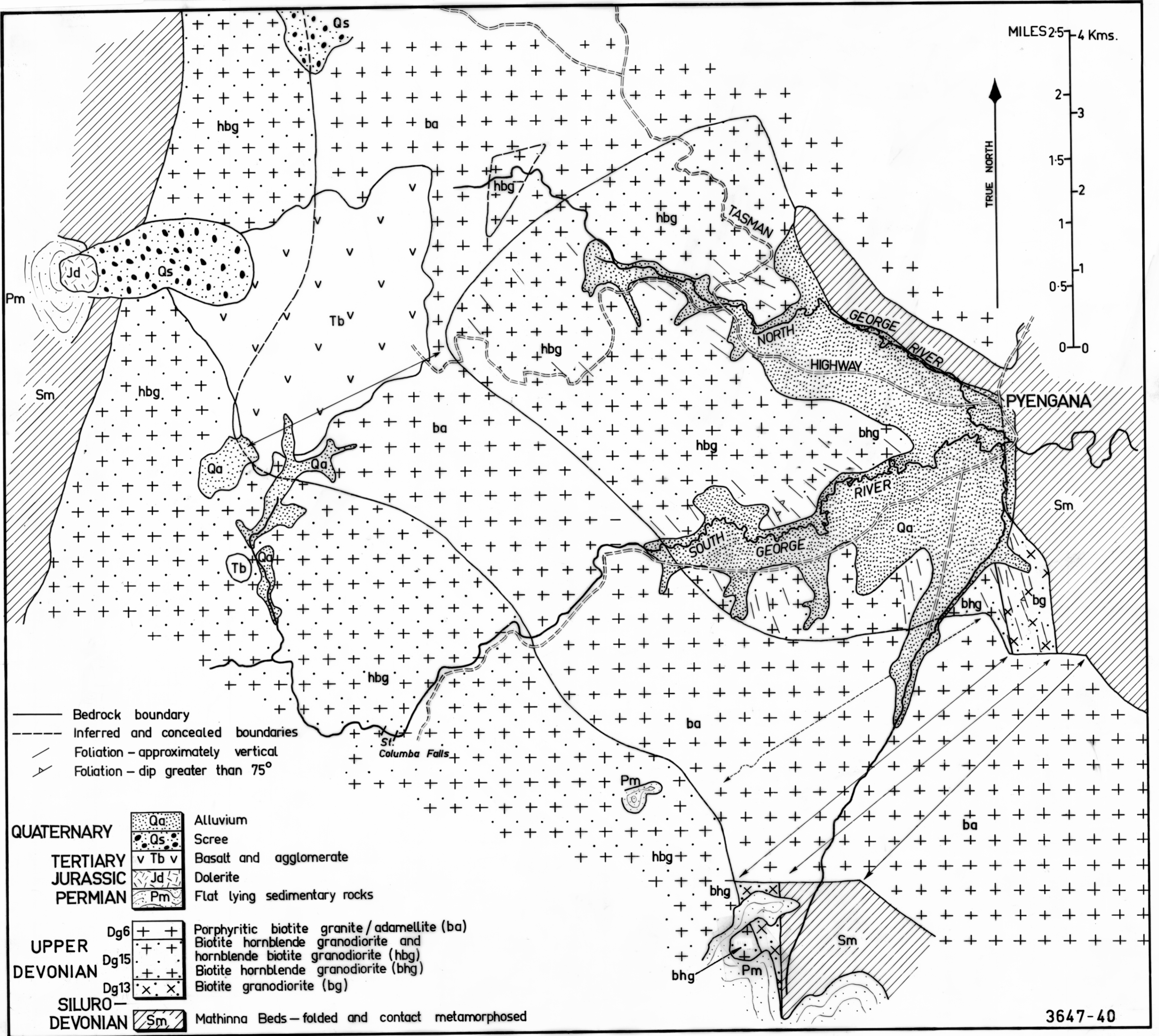


5 cm

MILES 2.5 4 Kms.

TRUE NORTH

2
3
1.5
2
1
0.5
0-0



- Bedrock boundary
- - - Inferred and concealed boundaries
- / / / Foliation - approximately vertical
- > / Foliation - dip greater than 75°

QUATERNARY			Alluvium
			Scree
TERTIARY			Basalt and agglomerate
JURASSIC			Dolerite
PERMIAN			Flat lying sedimentary rocks
UPPER DEVONIAN			Porphyritic biotite granite/adamellite (ba)
			Biotite hornblende granodiorite and hornblende biotite granodiorite (hbg)
			Biotite hornblende granodiorite (bhg)
			Biotite granodiorite (bg)
SILURO-DEVONIAN			Mathinna Beds - folded and contact metamorphosed