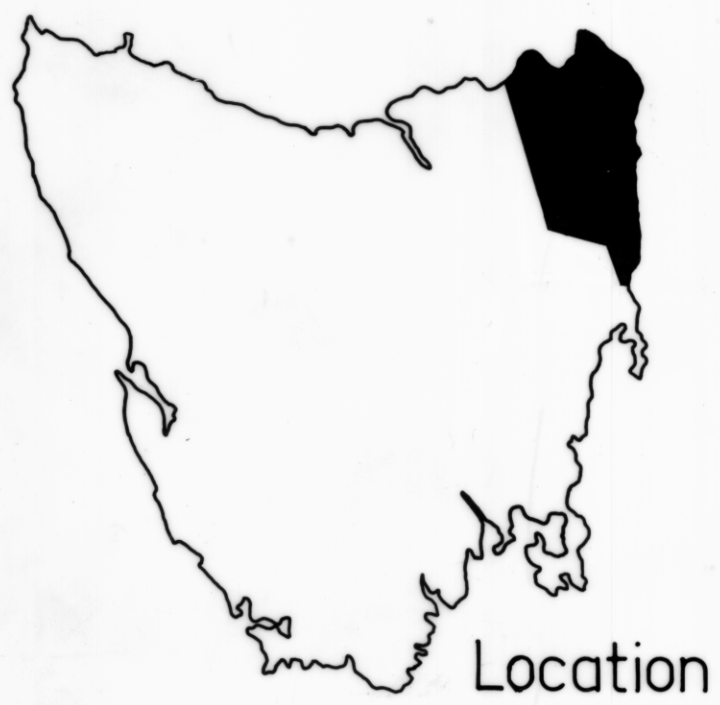
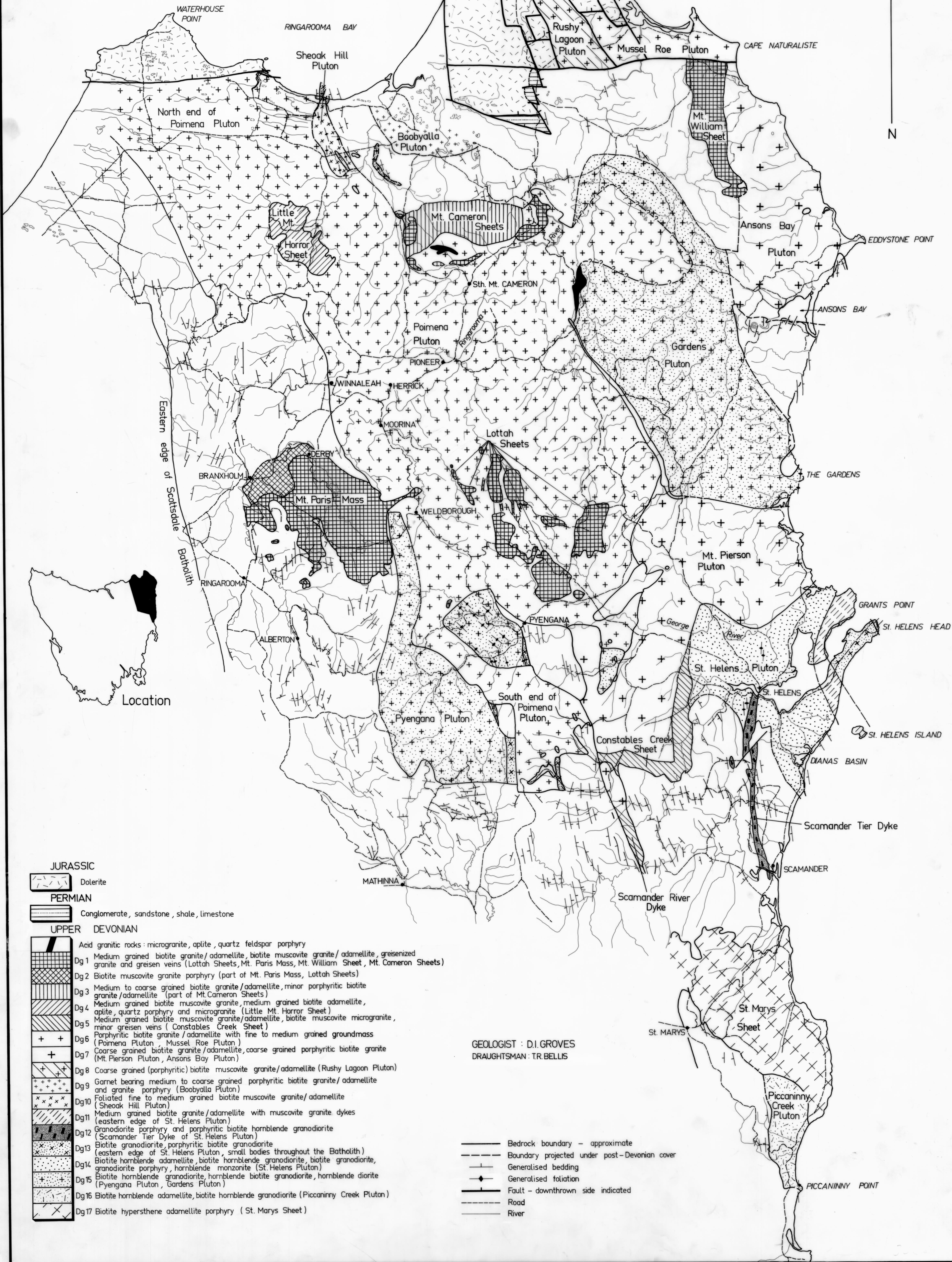
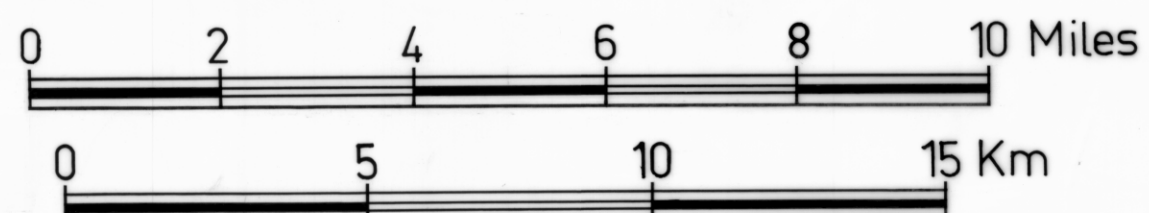


BEDROCK GEOLOGY BLUE TIER BATHOLITH



- JURASSIC**
Dolerite
- PERMIAN**
Conglomerate, sandstone, shale, limestone
- UPPER DEVONIAN**
- Acid granitic rocks: microgranite, aplite, quartz feldspar porphyry
 - Dg1 Medium grained biotite granite/adamellite, biotite muscovite granite/adamellite, greisenized granite and greisen veins (Lottah Sheets, Mt. Paris Mass, Mt. William Sheet, Mt. Cameron Sheets)
 - Dg2 Biotite muscovite granite porphyry (part of Mt. Paris Mass, Lottah Sheets)
 - Dg3 Medium to coarse grained biotite granite/adamellite, minor porphyritic biotite granite/adamellite (part of Mt. Cameron Sheets)
 - Dg4 Medium grained biotite muscovite granite, medium grained biotite adamellite, aplite, quartz porphyry and microgranite (Little Mt. Horror Sheet)
 - Dg5 Medium grained biotite muscovite granite/adamellite, biotite muscovite microgranite, minor greisen veins (Constables Creek Sheet)
 - Dg6 Porphyritic biotite granite/adamellite with fine to medium grained groundmass (Paimena Pluton, Mussel Roe Pluton)
 - Dg7 Coarse grained biotite granite/adamellite, coarse grained porphyritic biotite granite (Mt. Pierson Pluton, Ansons Bay Pluton)
 - Dg8 Coarse grained (porphyritic) biotite muscovite granite/adamellite (Rushy Lagoon Pluton)
 - Dg9 Garnet bearing medium to coarse grained porphyritic biotite granite/adamellite and granite porphyry (Boobyalla Pluton)
 - Dg10 Foliated fine to medium grained biotite muscovite granite/adamellite (Sheoak Hill Pluton)
 - Dg11 Medium grained biotite granite/adamellite with muscovite granite dykes (eastern edge of St. Helens Pluton)
 - Dg12 Granodiorite porphyry and porphyritic biotite hornblende granodiorite (Scamander Tier Dyke of St. Helens Pluton)
 - Dg13 Biotite granodiorite, porphyritic biotite granodiorite (eastern edge of St. Helens Pluton, small bodies throughout the Batholith)
 - Dg14 Biotite hornblende adamellite, biotite hornblende granodiorite, biotite granodiorite, granodiorite porphyry, hornblende monzonite (St. Helens Pluton)
 - Dg15 Biotite hornblende granodiorite, hornblende biotite granodiorite, hornblende diorite (Pyengana Pluton, Gardens Pluton)
 - Dg16 Biotite hornblende adamellite, biotite hornblende granodiorite (Piccaninny Creek Pluton)
 - Dg17 Biotite hypersthene adamellite porphyry (St. Marys Sheet)

GEOLOGIST: D.I. GROVES
DRAUGHTSMAN: TR. BELLIS

- Bedrock boundary - approximate
- Boundary projected under post-Devonian cover
- Generalised bedding
- Generalised foliation
- Fault - downthrown side indicated
- Road
- River