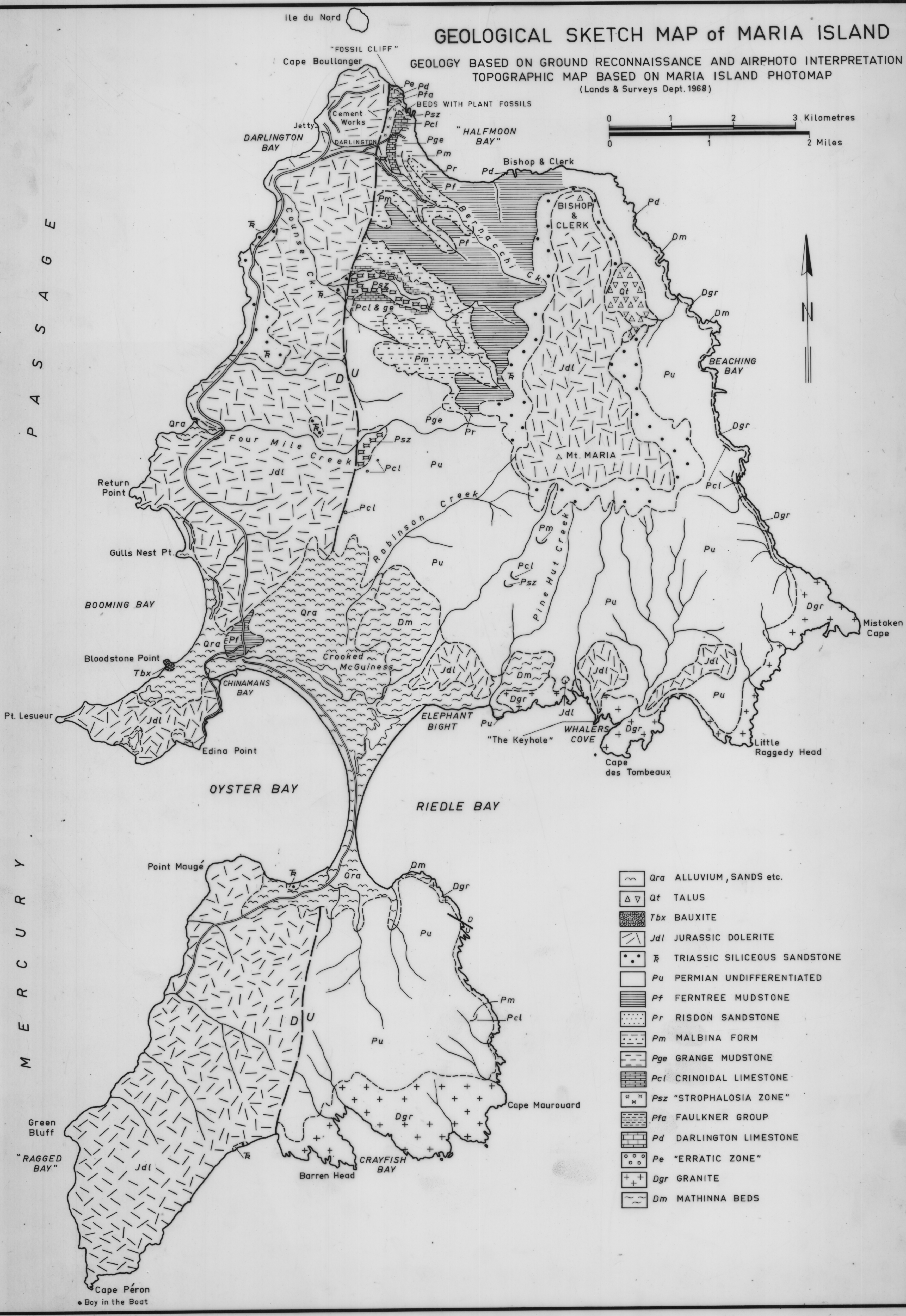
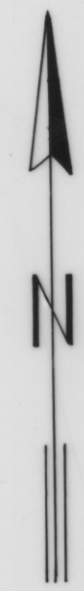
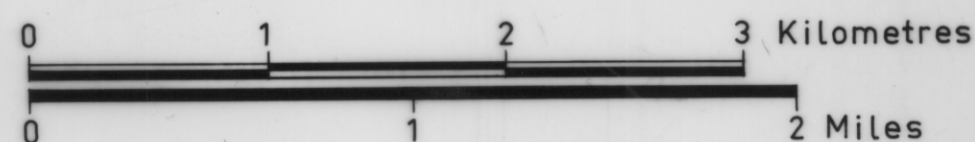


5 cm

GEOLOGICAL SKETCH MAP of MARIA ISLAND

GEOLOGY BASED ON GROUND RECONNAISSANCE AND AIRPHOTO INTERPRETATION
TOPOGRAPHIC MAP BASED ON MARIA ISLAND PHOTOMAP
(Lands & Surveys Dept. 1968)



- Qra ALLUVIUM, SANDS etc.
- Qt TALUS
- Tbx BAUXITE
- Jdl JURASSIC DOLERITE
- Tbx TRIASSIC SILICEOUS SANDSTONE
- Pu PERMIAN UNDIFFERENTIATED
- Pf FERTREE MUDSTONE
- Pr RISDON SANDSTONE
- Pm MALBINA FORM
- Pge GRANGE MUDSTONE
- Pcl CRINOIDAL LIMESTONE
- Psz "STROPHALOSIA ZONE"
- Pfa FAULKNER GROUP
- Pd DARLINGTON LIMESTONE
- Pe "ERRATIC ZONE"
- Dgr GRANITE
- Dm MATHINNA BEDS

Reduce X2 then X 3.94