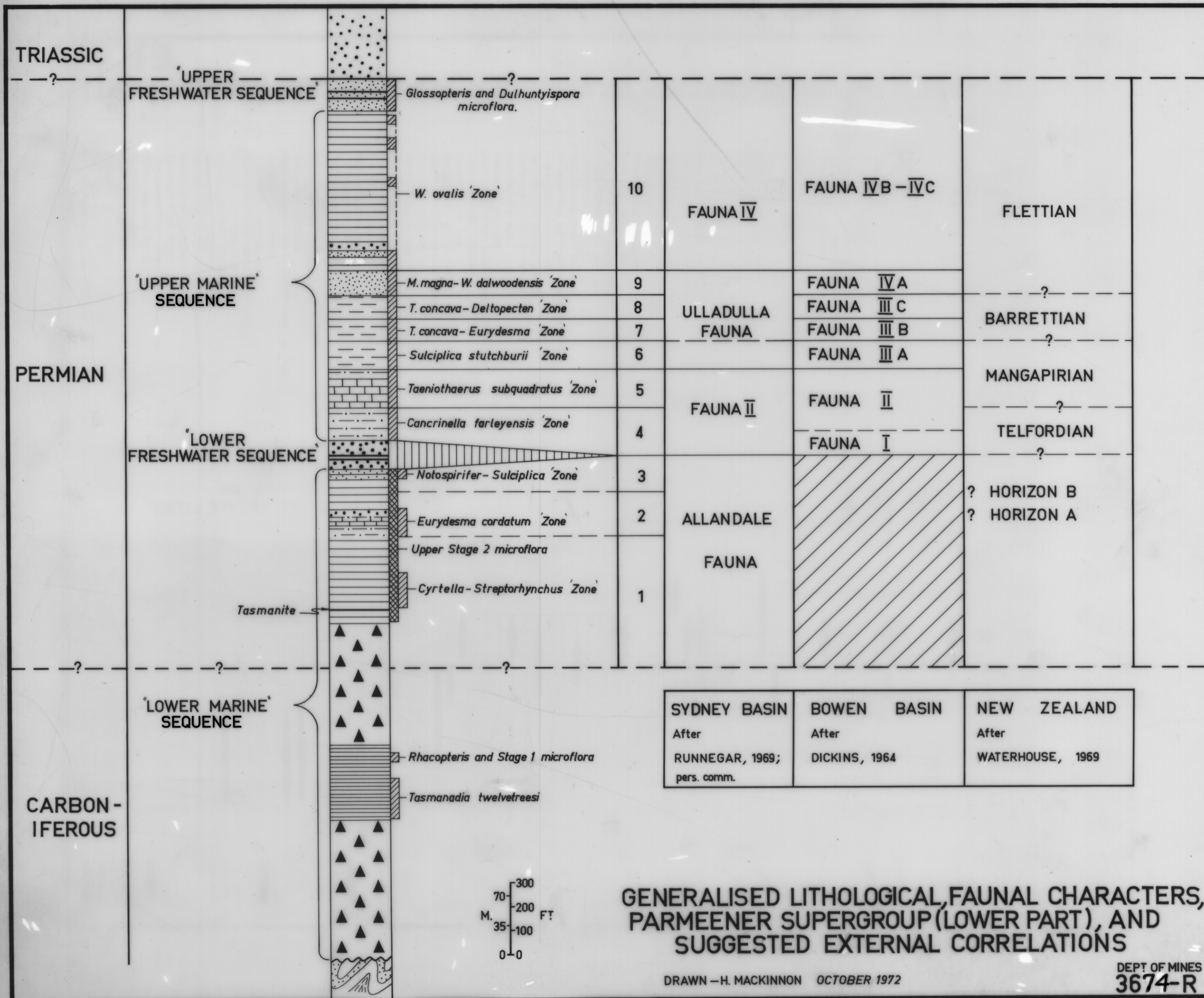


3674

720



SYDNEY BASIN	BOWEN BASIN	NEW ZEALAND
After RUNNEGAR, 1969; pers. comm.	After DICKINS, 1964	After WATERHOUSE, 1969

GENERALISED LITHOLOGICAL, FAUNAL CHARACTERS, PARMEENER SUPERGROUP (LOWER PART), AND SUGGESTED EXTERNAL CORRELATIONS

DRAWN - H. MACKINNON OCTOBER 1972

DEPT OF MINES
3674-R

5 cm

300
70-200 FT
35-100
0-0