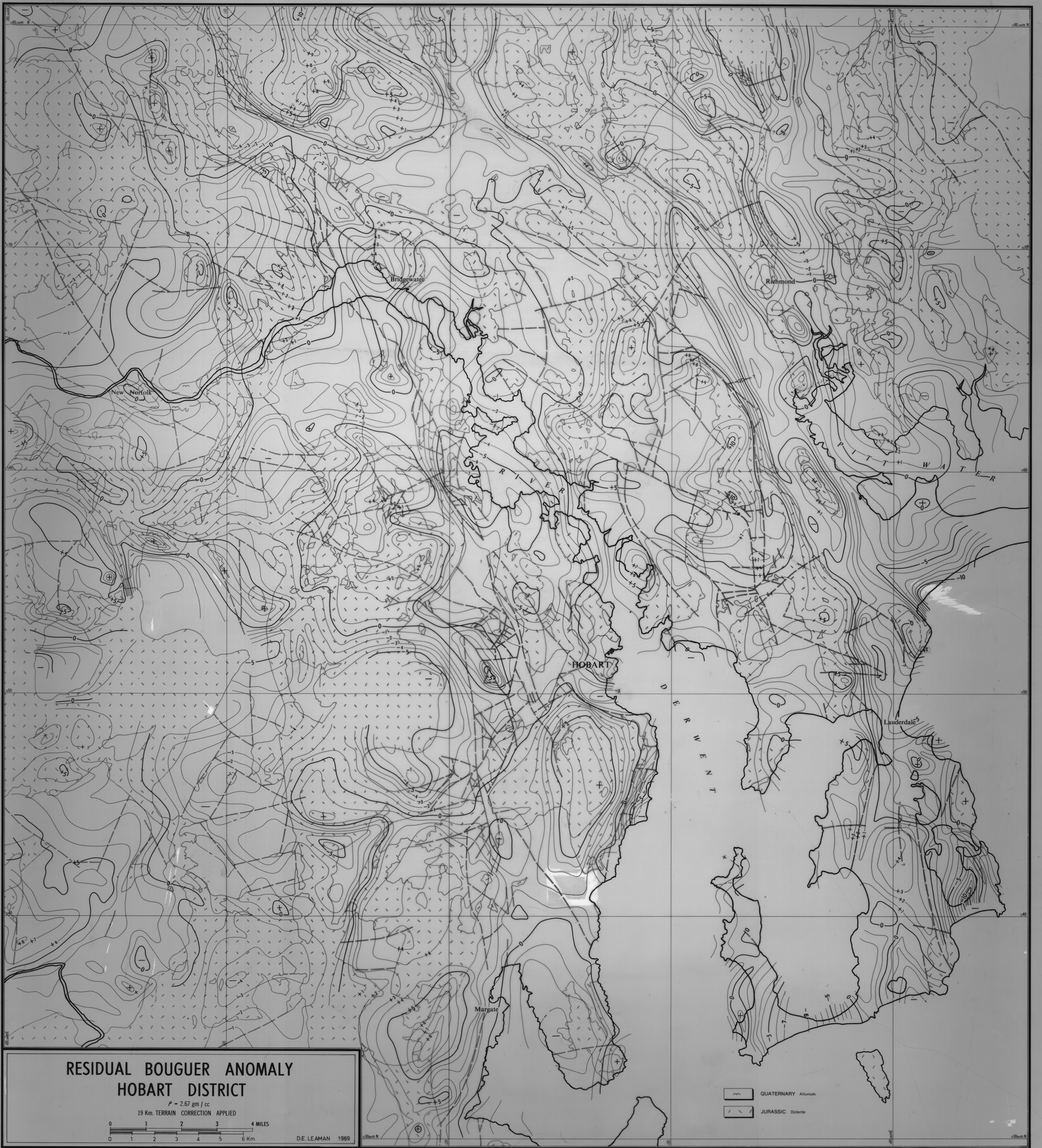
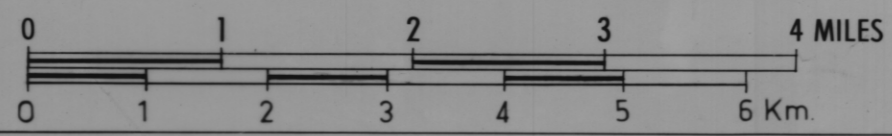


5 cm



**RESIDUAL BOUGUER ANOMALY
HOBART DISTRICT**

$\rho = 2.67 \text{ gm/cc}$
19 Km. TERRAIN CORRECTION APPLIED



D. E. LEAMAN 1969

- QUATERNARY Alluvium
- JURASSIC Dolerite

REDUCE
TO
11 INCHES