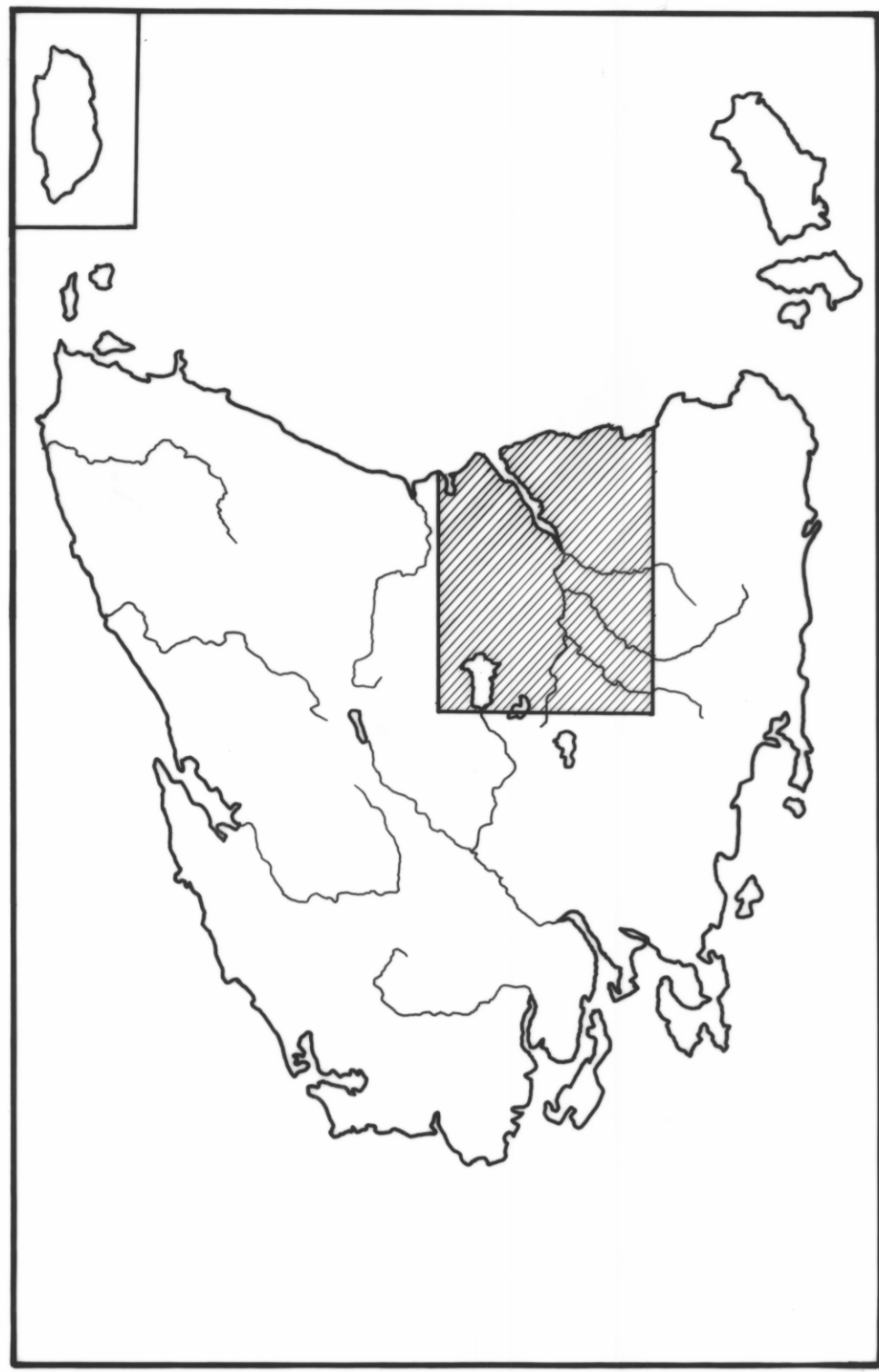
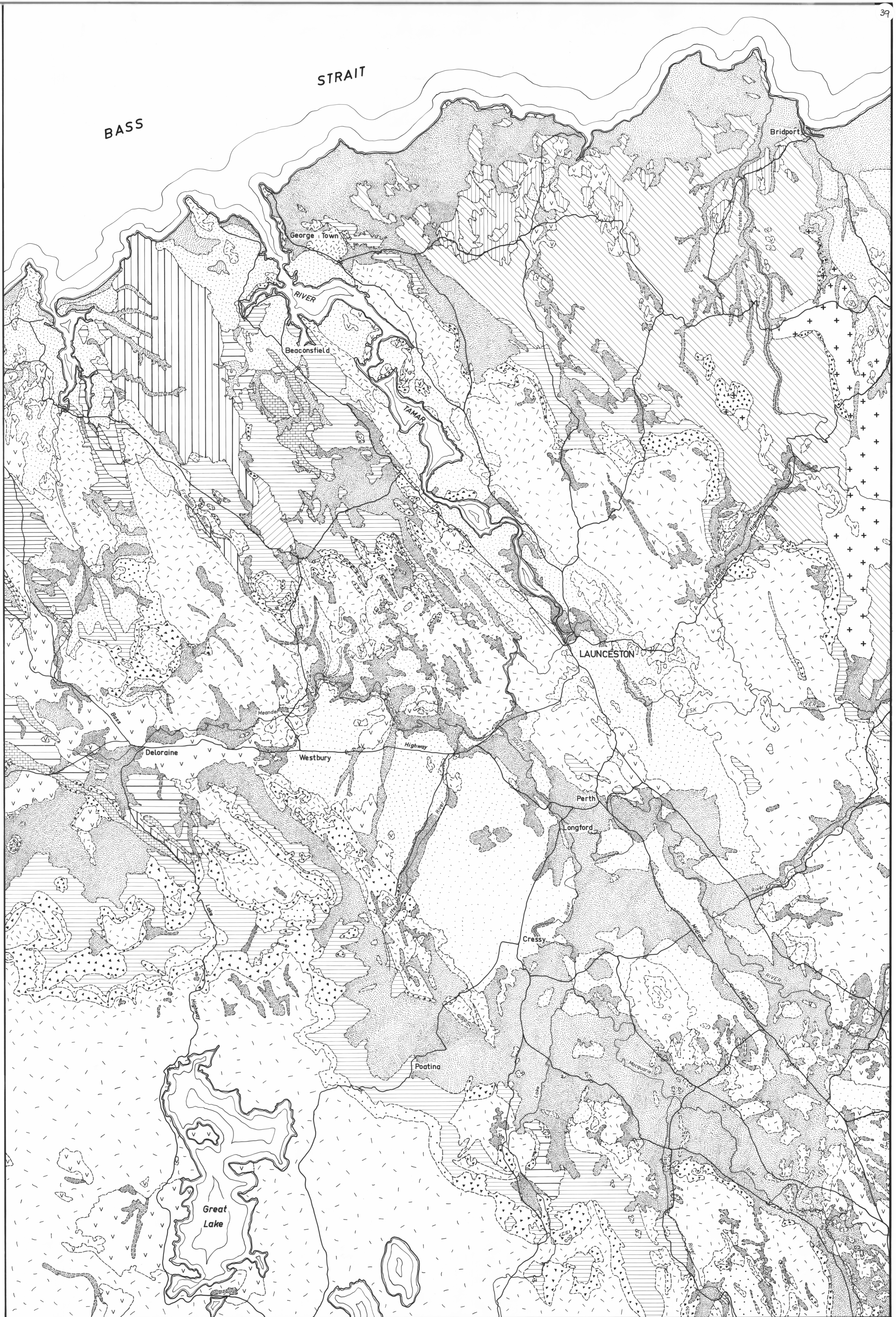


5 cm



LOCATION



- Quaternary
- Quaternary talus
- Cainozoic
- Tertiary
- Tertiary Basalt
- Jurassic Dolerite
- Triassic
- Permian
- Devonian Granite
- Ordovician - Devonian
- Lower Palaeozoic - Mathinna beds
- Ordovician
- Cambrian
- Pre-Cambrian

GEOLOGY COMPILED FROM MINES DEPT.
1 INCH TO 1 MILE SERIES MAPS :
BEACONSFIELD, FRANKFORD, QUAMBY,
GREAT LAKE, NOLAND BAY, PIPERS
RIVER, LAUNCESTON, LONGFORD and
LAKE RIVER.

