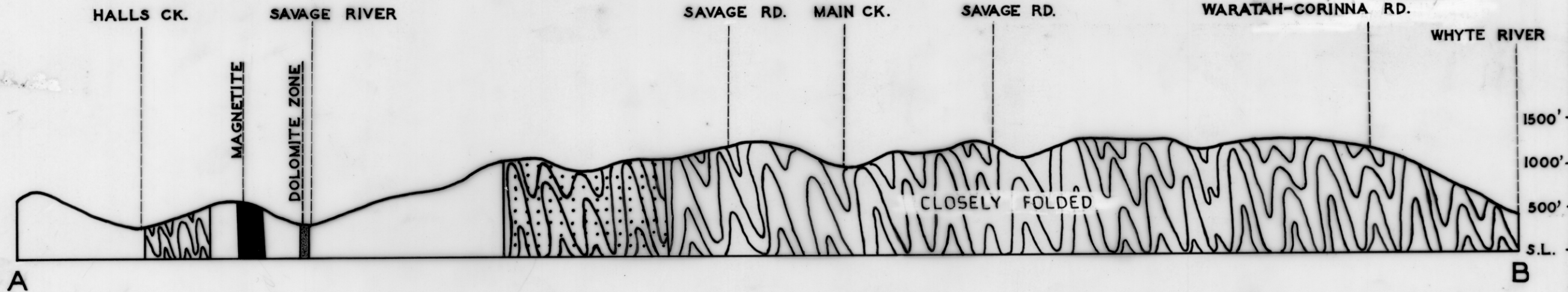
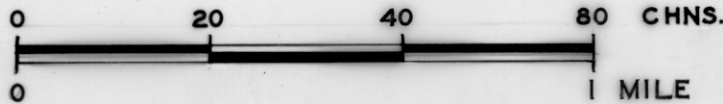


3772

836

5 cm

SECTION A-B SAVAGE RIVER IRON ORE DEPOSIT



- | | | |
|-------------|--|--|
| CAMBRIAN ? | | AMPHIBOLITE |
| LOWER ? | | WHYTE SCHIST |
| PRECAMBRIAN | | PSAMMITIC & INTERCALATED PELITIC BEDS
PELITIC & INTERCALATED PSAMMITIC BEDS |

1000' 1500' 500' S.L.
 Savage River
 1000' 1500' 500' S.L.
 1000' 1500' 500' S.L.