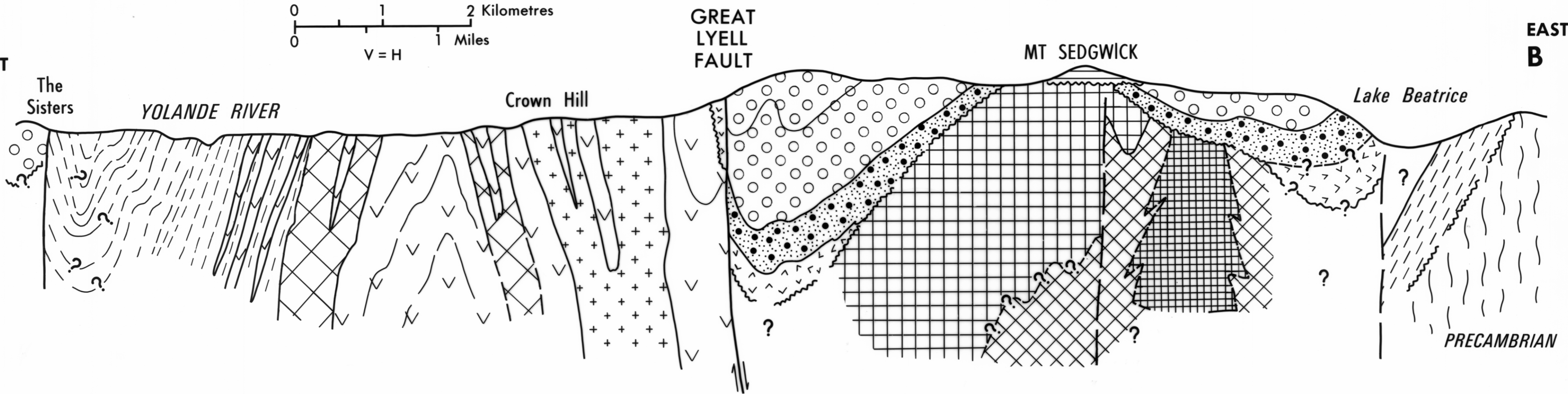


5 cm

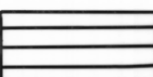
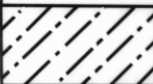
0 1 2 Kilometres
0 1 Miles
V = H

WEST
A

EAST
B




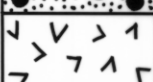

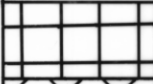

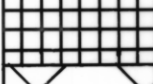

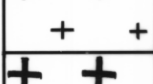
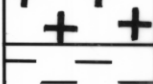
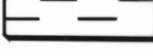
CROSS SECTION A - B THROUGH MT SEDGWICK

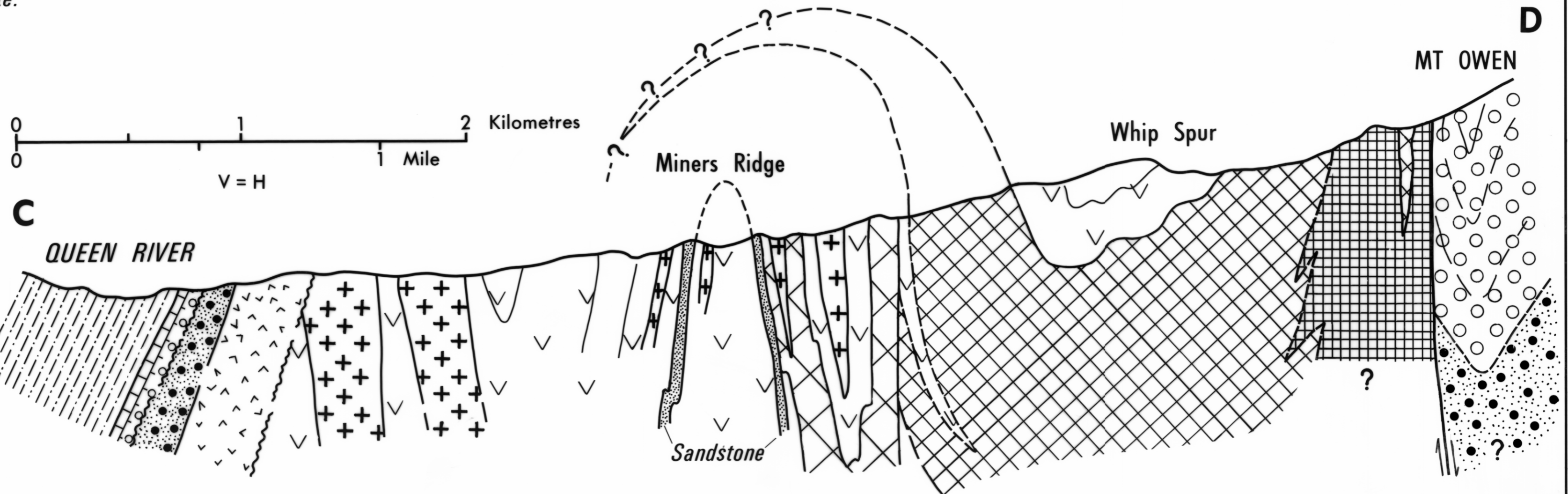
 PERMO-TRIAS sediments, JURASSIC Dolerite.
 SILURO-DEVONIAN Eldon Group.

ORDOVICIAN

 Gordon Limestone.
 Owen Conglomerate.

CAMBRIAN

 Jukes Formation. } Tyndall Group
 Comstock Tuff. }
 Queenstown Pyroclastics.
 Quartz-porphry lavas.
 Feldspar-porphry lavas.
 Massive pink Darwin-type lava.
 Quartz-feldspar-porphry intrusives.
 Hornblende-pyroxene-porphry intrusives.
 Lynch Creek "Basalts".
 Sedimentary sequences of Yolande River and Lake Beatrice area.



CROSS SECTION C - D THROUGH WHIP SPUR

Reduce to Line A-B