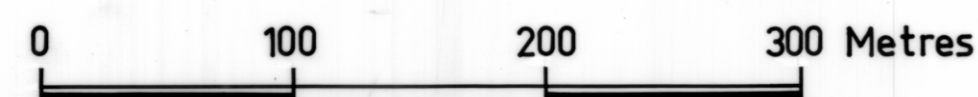


# SEISMIC—MAGNETIC SURVEY PROPOSED BEDLAM WALLS BRIDGE

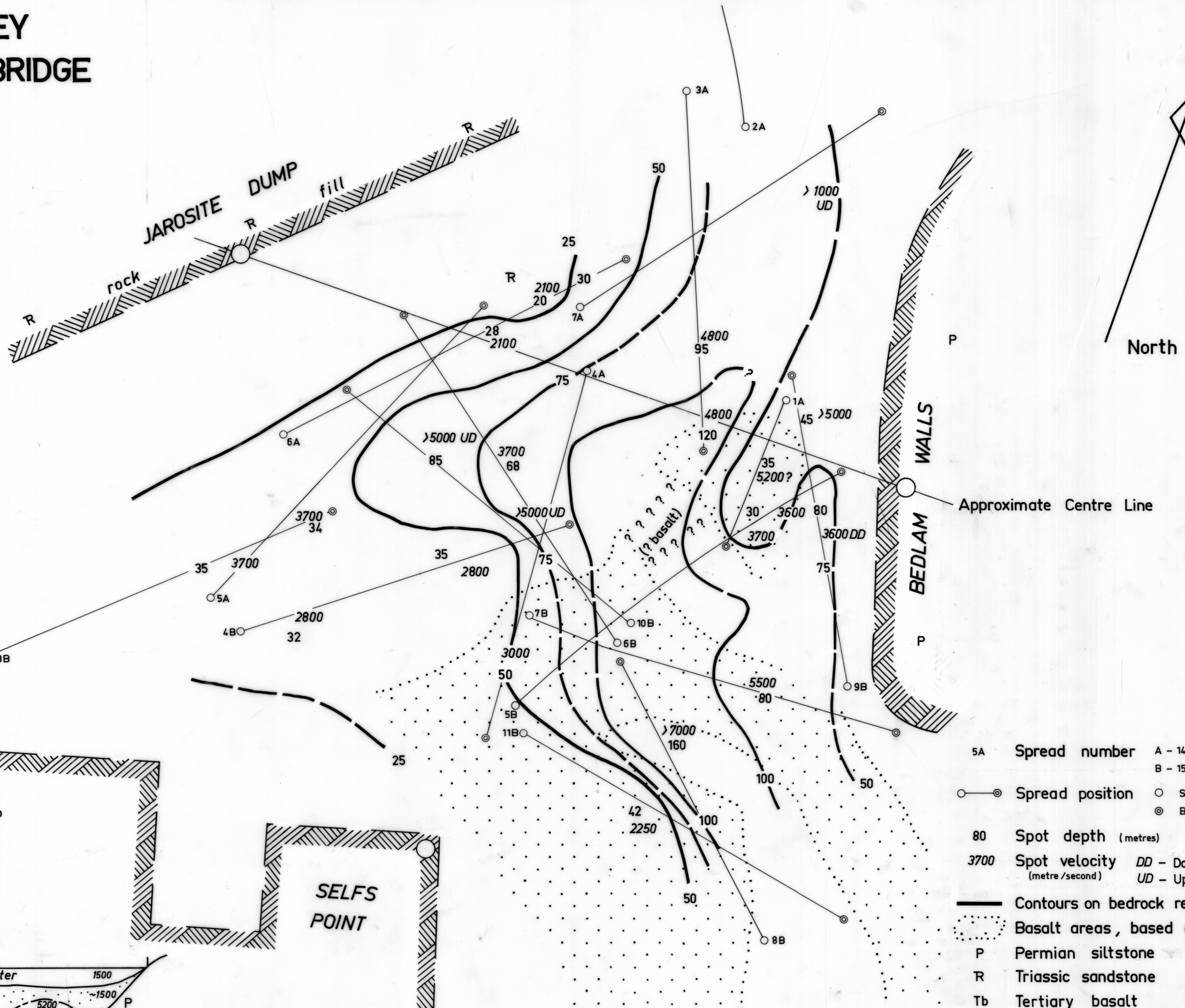
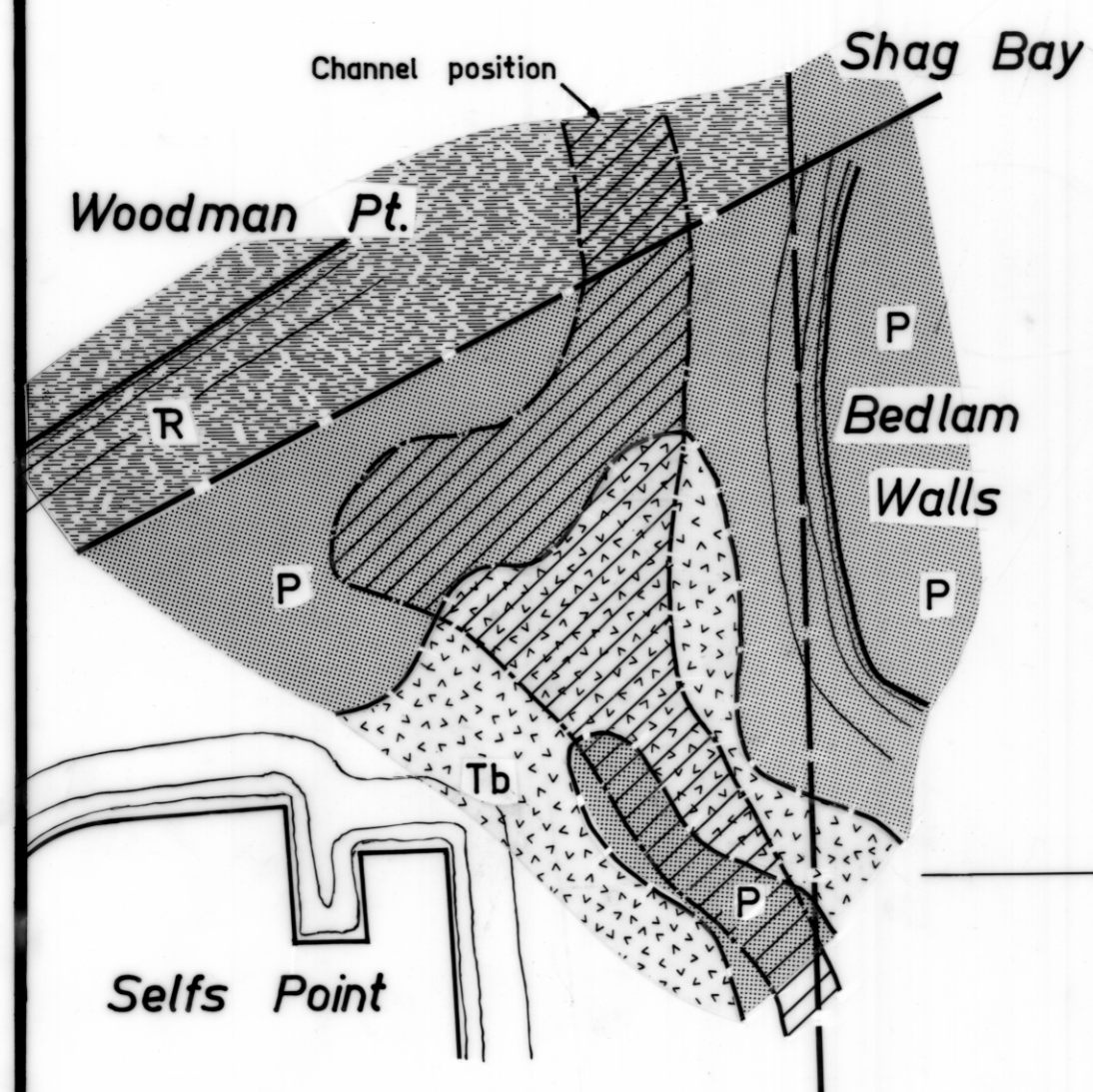


Geophysicist : D.E. LEAMAN

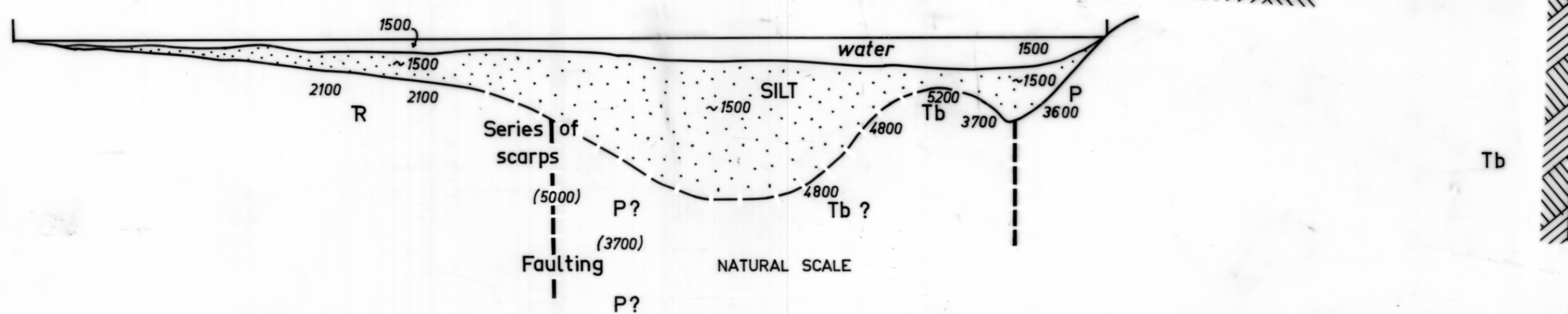
Draughtsman : T.R. Bellis

Date : December, 1973

## SKETCH GEOLOGY



## COMPILED SECTION—CENTRE LINE



- 5A Spread number    A - 14/11/73  
                              B - 15/11/73
- Spread position    ○ Shot point  
                              ⊙ Boat
- 80 Spot depth (metres)
- 3700 Spot velocity    DD - Down dip  
                              (metre/second)    UD - Up dip
- Contours on bedrock refractor (from S.L.)
- ⋯ Basalt areas, based on magnetics
- P Permian siltstone
- R Triassic sandstone
- Tb Tertiary basalt

**WARNING :** These interpretive diagrams should not be used without consideration of the assumptions and discussion given in the accompanying report.