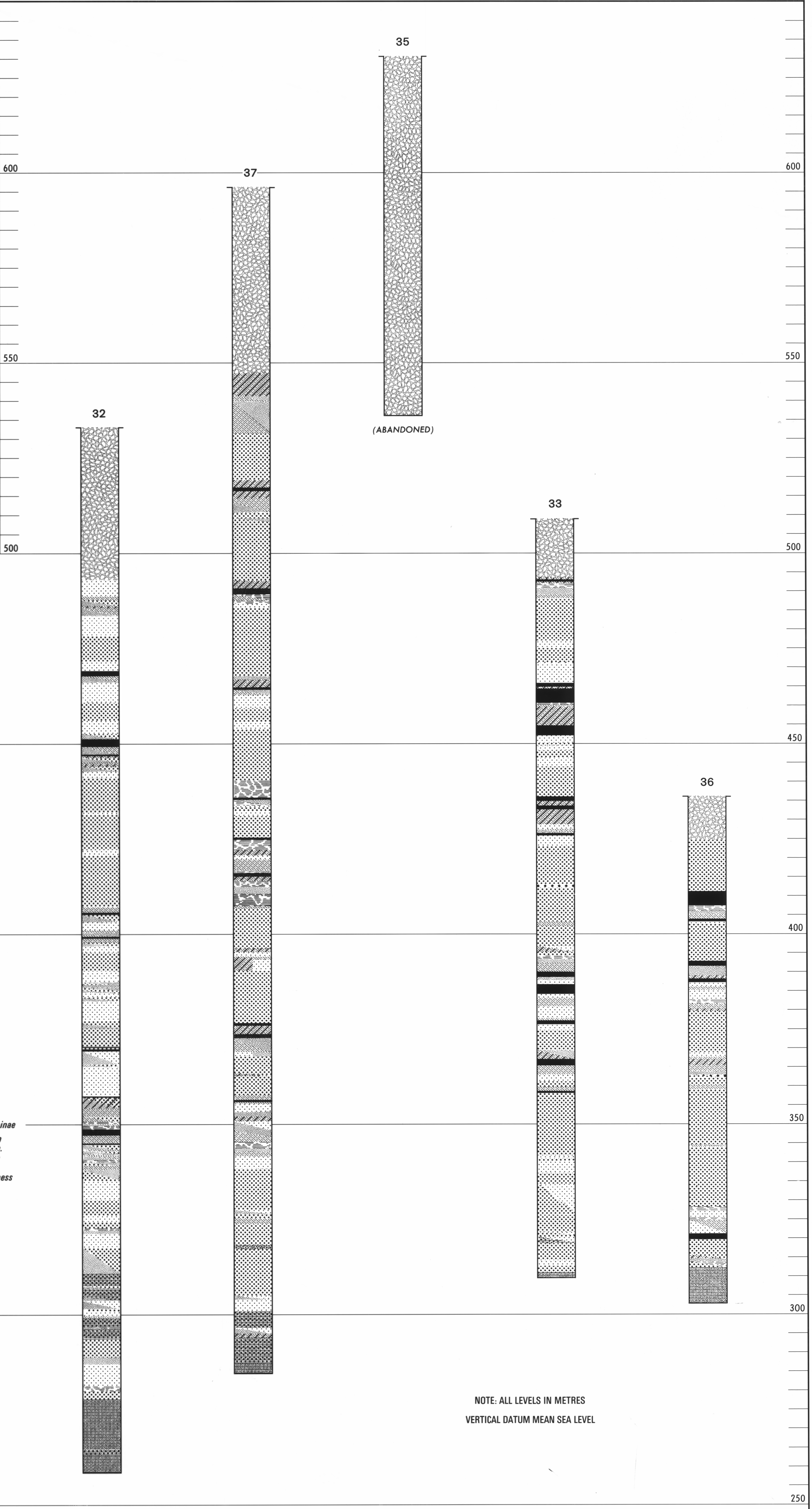
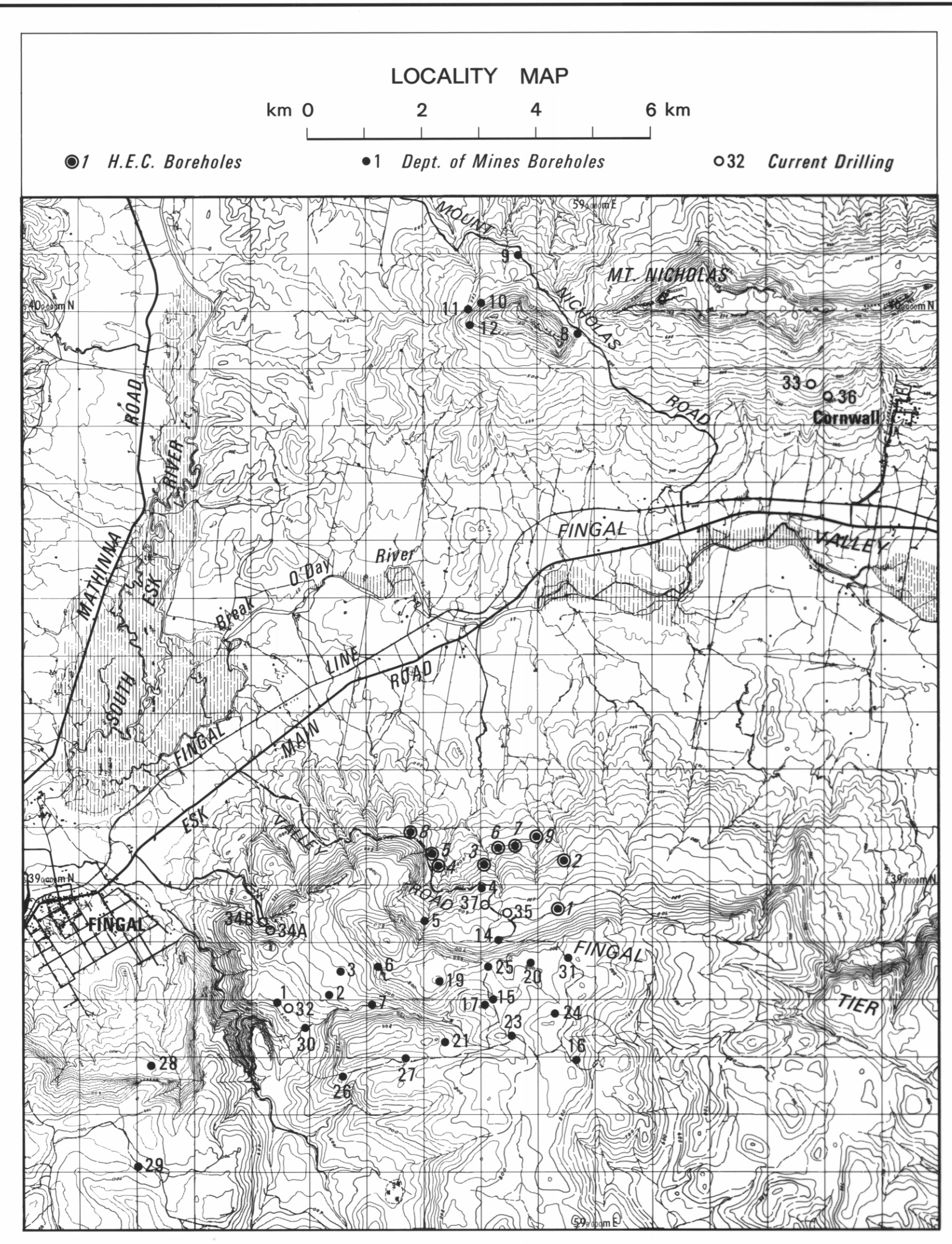


5 cm



LEGEND

QUATERNARY		Dolerite talus (clay, sand, gravel, boulders)
		Lithic sandstone—fine to fine medium grainsize
		Lithic sandstone—medium to coarse grainsize
		Siltstone
		Mudstone, claystone
		Shale
		Carbonaceous mudstone, etc.
		Coal traces, coal veins, coal bands, carbonaceous laminae
TRIASSIC (UPPER PARMEENER SUPER-GROUP)		Thin beds shown in true stratigraphic position within another unit e.g. mudstone band within a sandstone. Interbedded units; beds generally > 1cm in thickness e.g. interbedded sandstone and siltstone. Interlaminated units; beds generally < 1cm in thickness e.g. siltstone and mudstone laminae.
		Breccia (Fault Zone?)
		Clay- or mud-pellet conglomerate
		Quartz pebble conglomerate
		Coal
		Quartzose sandstone—fine to coarse grainsize
PERMIAN (LOWER PARMEENER SUPER-GROUP)		Mudstone, etc. with scattered grit
		Limestone
		Conglomerate
SILURO-DEVONIAN		Mudstone, sandstone, slate, quartzite
IGNEOUS ROCKS		
JURASSIC		Dolerite
DEVONIAN		Granite
		Weathered unit

NOTE: ALL LEVELS IN METRES
VERTICAL DATUM MEAN SEA LEVEL

GENERALIZED BOREHOLE LOGS IN NORTH-EAST TASMANIA

DEPARTMENT OF MINES - TASMANIA

GEOLOGIST R. CASTLEDEN

SEPTEMBER 1979