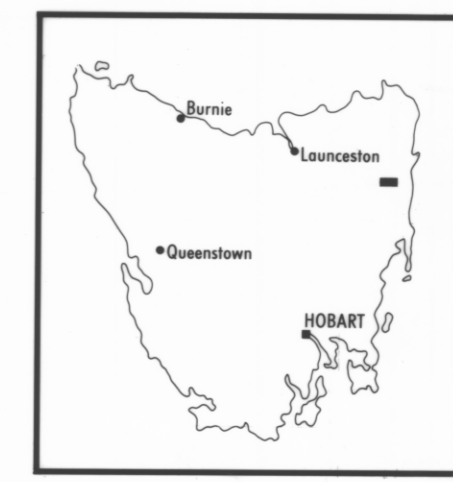
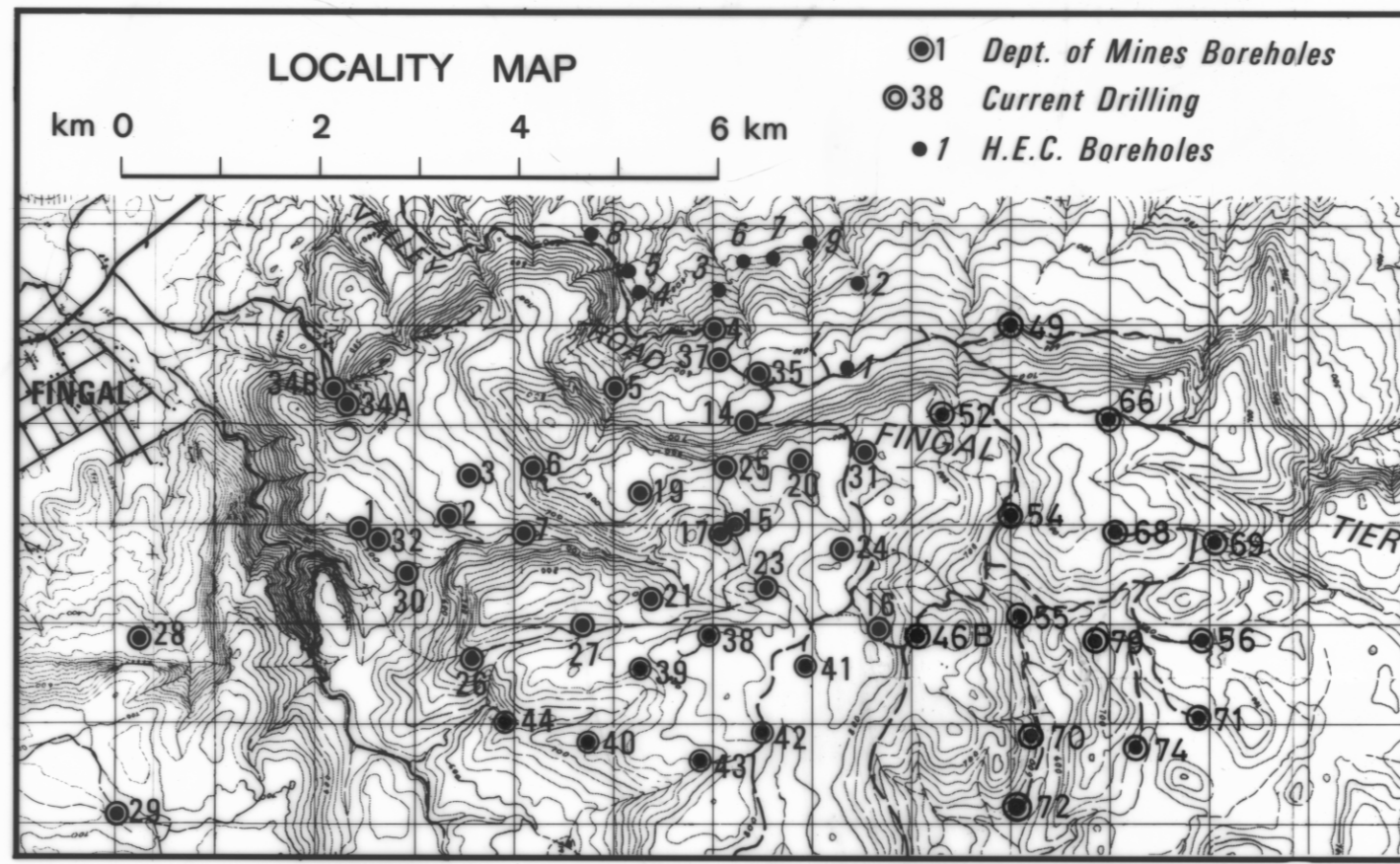


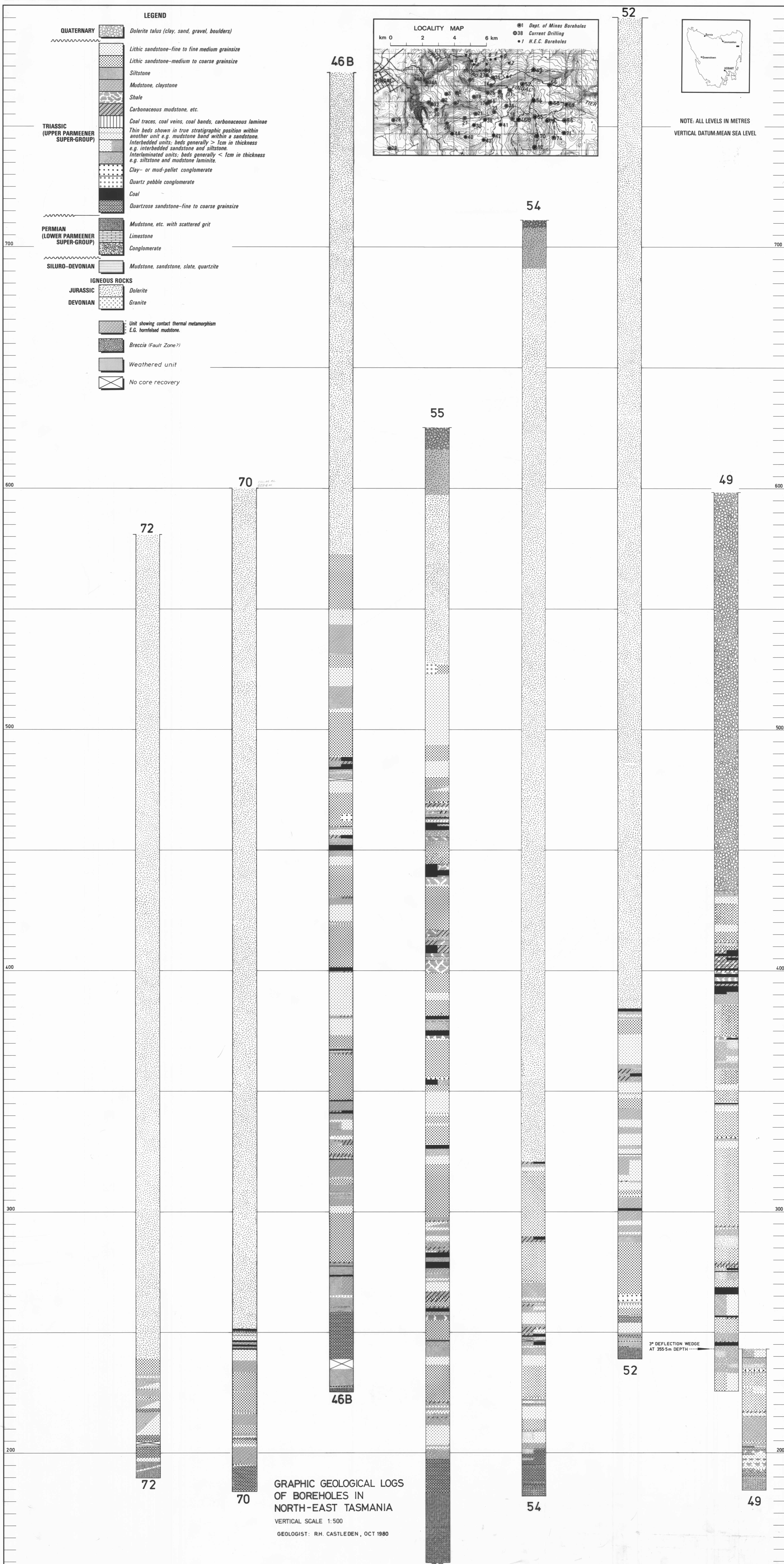
5 cm

LEGEND

- QUATERNARY**
 - Dolerite talus (clay, sand, gravel, boulders)
 - Lithic sandstone-fine to fine medium grainsize
 - Lithic sandstone-medium to coarse grainsize
 - Siltstone
 - Mudstone, claystone
 - Shale
 - Carbonaceous mudstone, etc.
- TRIASSIC (UPPER PARMEENER SUPER-GROUP)**
 - Coal traces, coal veins, coal bands, carbonaceous laminae
 - Thin beds shown in true stratigraphic position within another unit e.g. mudstone band within a sandstone.
 - Interbedded units; beds generally > 1cm in thickness e.g. interbedded sandstone and siltstone.
 - Interlaminated units; beds generally < 1cm in thickness e.g. siltstone and mudstone laminae.
 - Clay- or mud-pellet conglomerate
 - Quartz pebble conglomerate
 - Coal
 - Quartzose sandstone-fine to coarse grainsize
- PERMIAN (LOWER PARMEENER SUPER-GROUP)**
 - Mudstone, etc. with scattered grit
 - Limestone
 - Conglomerate
- SILURO-DEVONIAN**
 - Mudstone, sandstone, slate, quartzite
- IGNEOUS ROCKS**
 - JURASSIC**
 - Dolerite
 - DEVONIAN**
 - Granite
- Unit showing contact thermal metamorphism E.G. hornfelsed mudstone.
- Breccia (Fault Zone?)
- Weathered unit
- No core recovery



NOTE: ALL LEVELS IN METRES
VERTICAL DATUM-MEAN SEA LEVEL



GRAPHIC GEOLOGICAL LOGS
OF BOREHOLES IN
NORTH-EAST TASMANIA
VERTICAL SCALE 1:500
GEOLOGIST: R.H. CASTLEDEN, OCT 1980