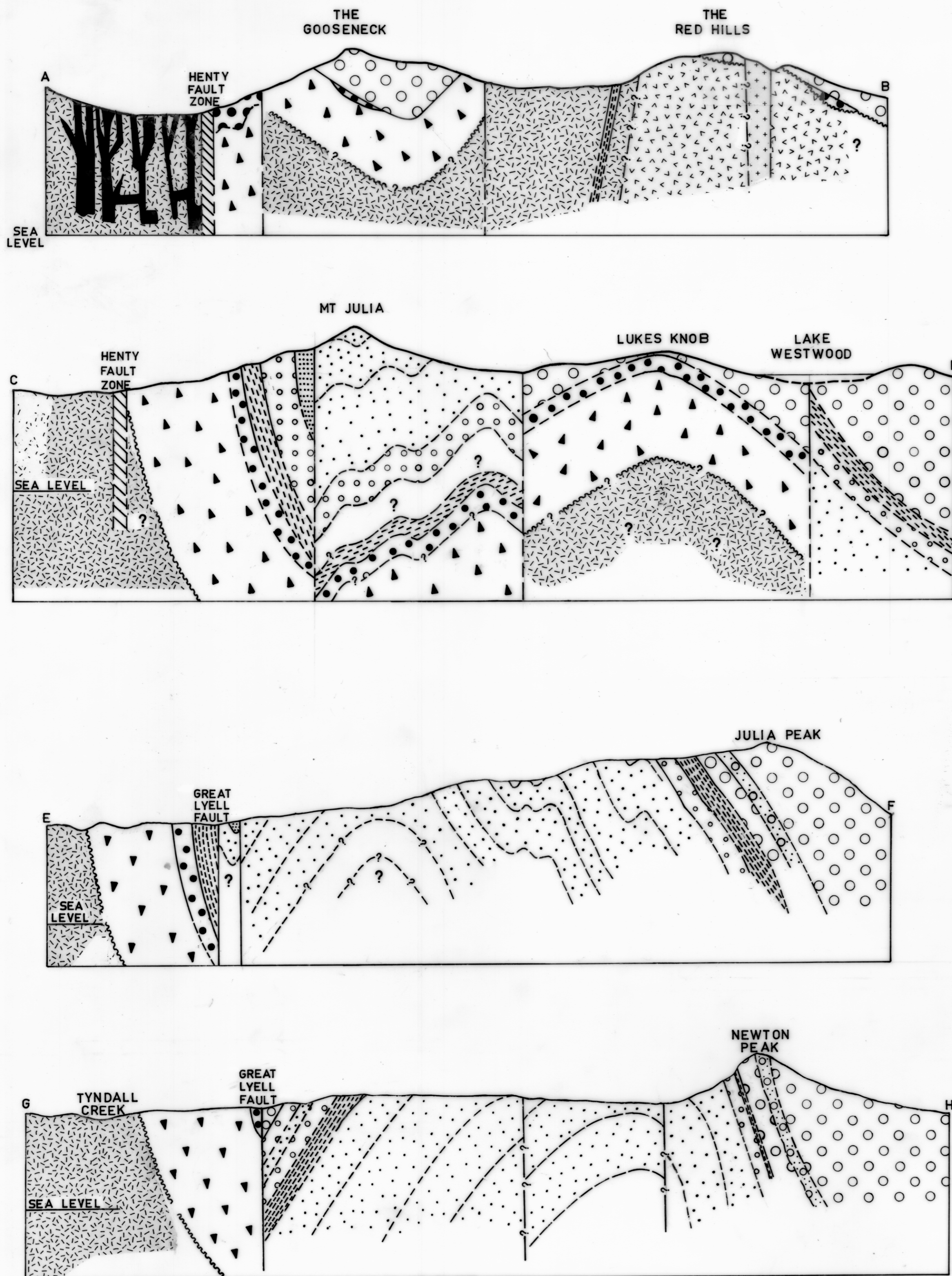


5 cm



CROSS SECTIONS THROUGH RED HILLS-NEWTON CREEK AREA

K.D. CORBETT

LEGEND

OWEN CONGLOMERATE CORRELATE

- Pink conglomerate
- Red sandstone
- Grey conglomerate
- Mainly quartzwacke sandstone
- Thin-bedded sandstone
- Mainly siltstone

"NEWTON CREEK SANDSTONE MEMBER"

JUKES FORMATION CORRELATE

- Volcaniclastic conglomerate and sandstone

COMSTOCK FORMATION CORRELATE

- Undifferentiated lava, tuff, sandstone and shale

PRE-TYNDALL GROUP ROCKS

- Feldspar porphyry lava sequences, with basic intrusives
- Siltstone-shale lens
- Darwin type rhyolite
- Quartz porphyry

