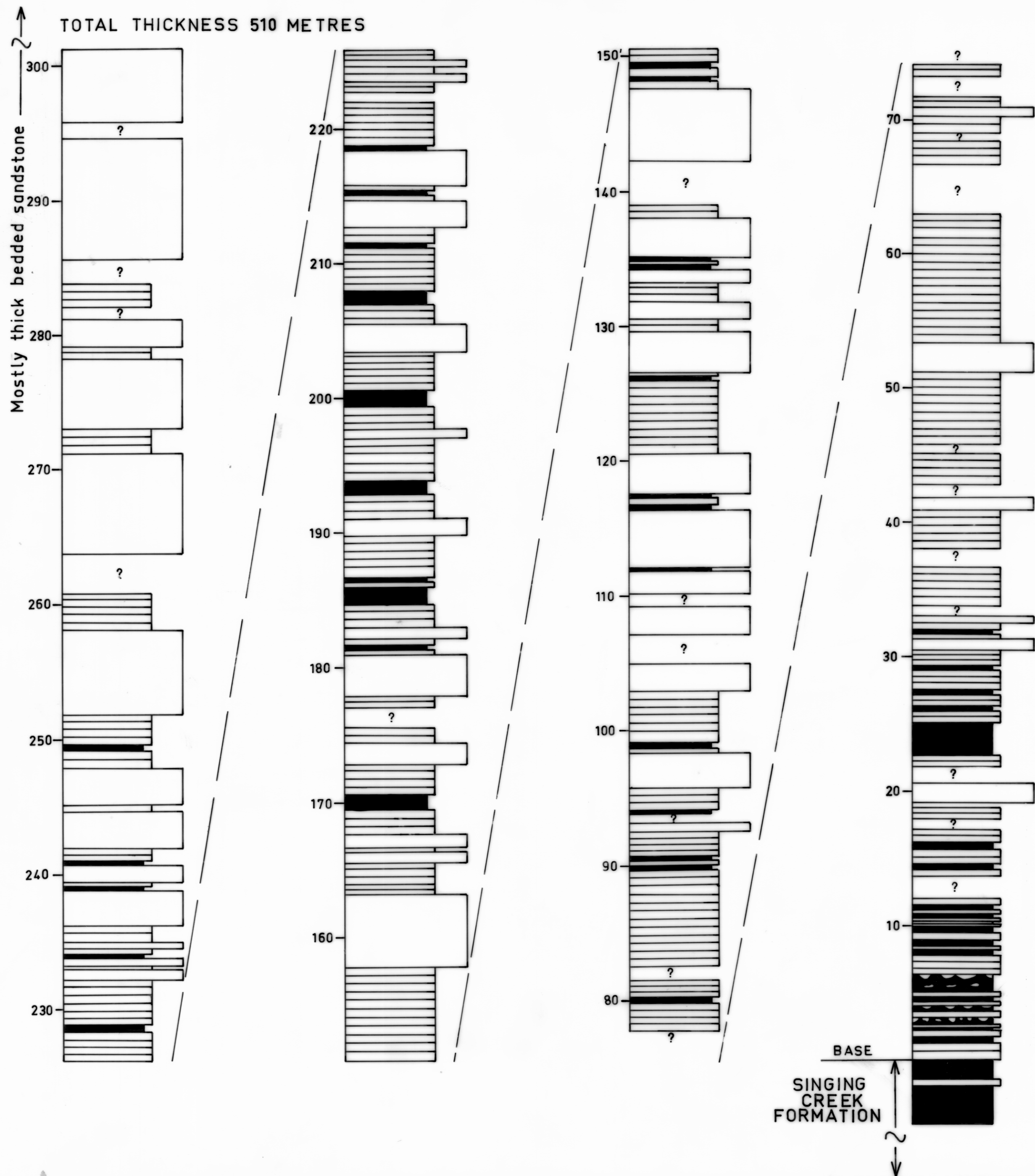


5 cm

TOTAL THICKNESS 510 METRES



KEY

Siltstone predominant.

Thin bedded sandstone & minor siltstone; laminated & cross-laminated; abundant worm burrows & bioturbation; also primary current lineation, ripple marks, "flaser" bedding, rare gastropods & inarticulates; low angle cross bedding.

Thick-bedded sandstone, conglomeratic in places; large-scale cross bedding; erosional base.

