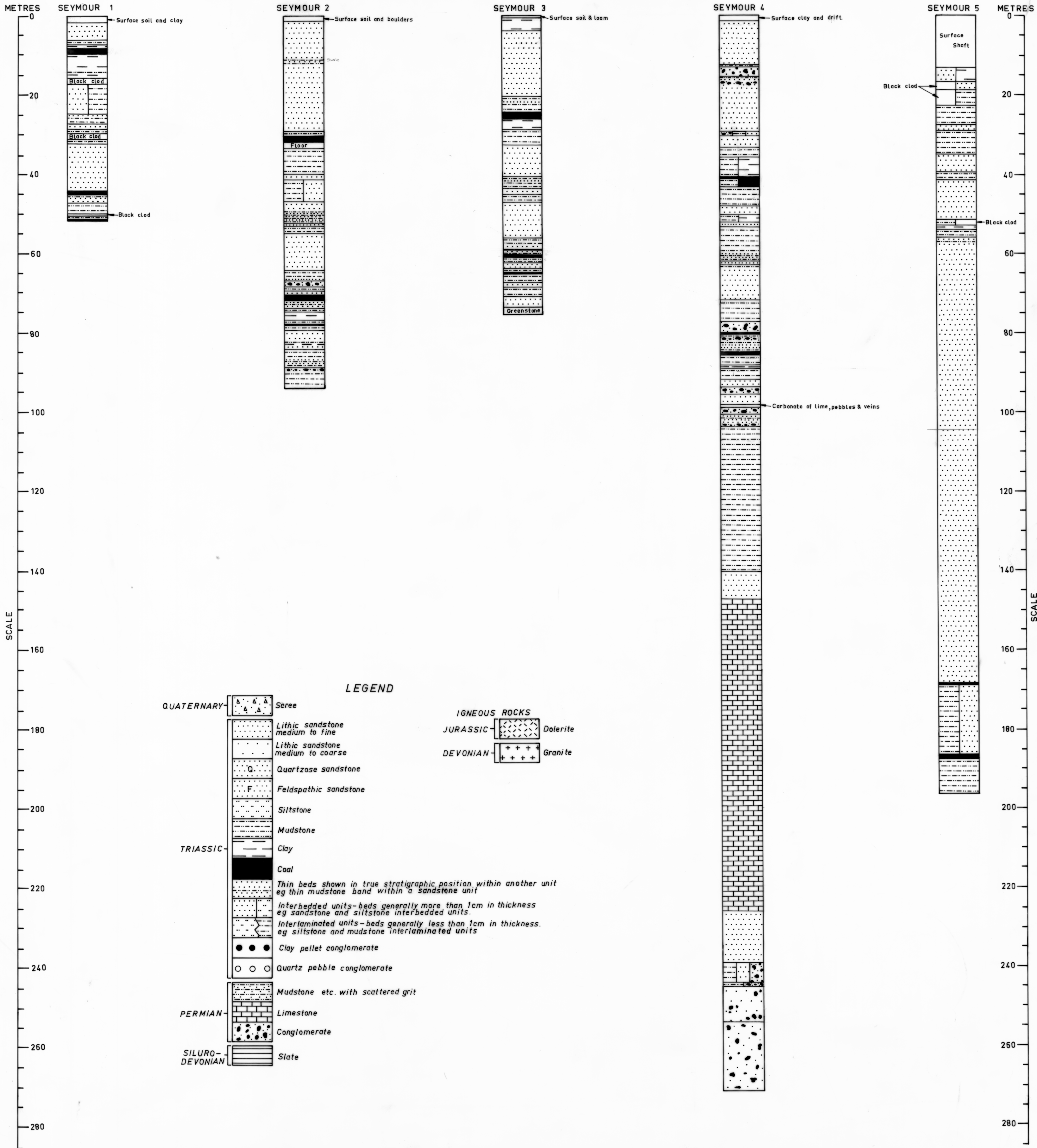


5 cm



LEGEND

- QUATERNARY - Serec
- Lithic sandstone medium to fine
- Lithic sandstone medium to coarse
- Quartzose sandstone
- Feldspathic sandstone
- Siltstone
- Mudstone
- TRIASSIC - Clay
- Coal
- Thin beds shown in true stratigraphic position within another unit eg thin mudstone band within a sandstone unit
- Interbedded units - beds generally more than 1cm in thickness eg sandstone and siltstone interbedded units.
- Interlaminated units - beds generally less than 1cm in thickness. eg siltstone and mudstone interlaminated units
- Clay pellet conglomerate
- Quartz pebble conglomerate
- PERMIAN - Mudstone etc. with scattered grit
- Limestone
- Conglomerate
- SILURO-DEVONIAN - Slate
- IGNEOUS ROCKS
- JURASSIC - Dolerite
- DEVONIAN - Granite

COAL BOREHOLE SECTIONS IN EASTERN TASMANIA

DEPARTMENT OF MINES-TASMANIA