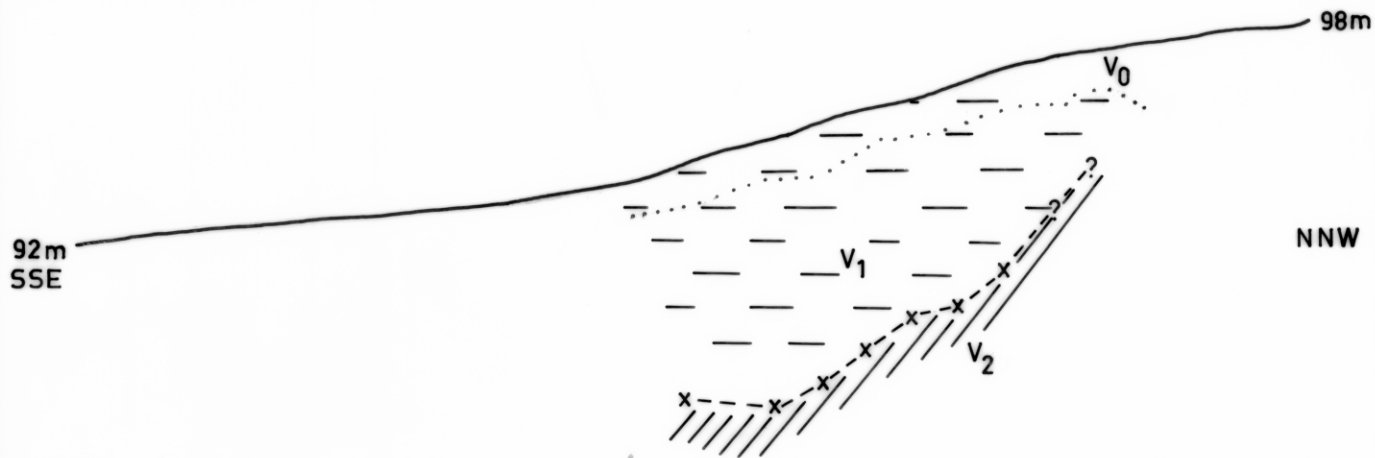


3970

214

5 cm

SEISMIC SECTION PARALLEL TO SPILLWAY (ABOUT 12m EAST)



$V_0 = 320\text{m/s}$      $V_1 = 670\text{m/s}$      $V_2 = 2220\text{m/s}$

DEPT OF MINES - TAS.    APRIL 1975

GEOPHYSICIST: C. KNIGHTS

Fig.3

3970-38