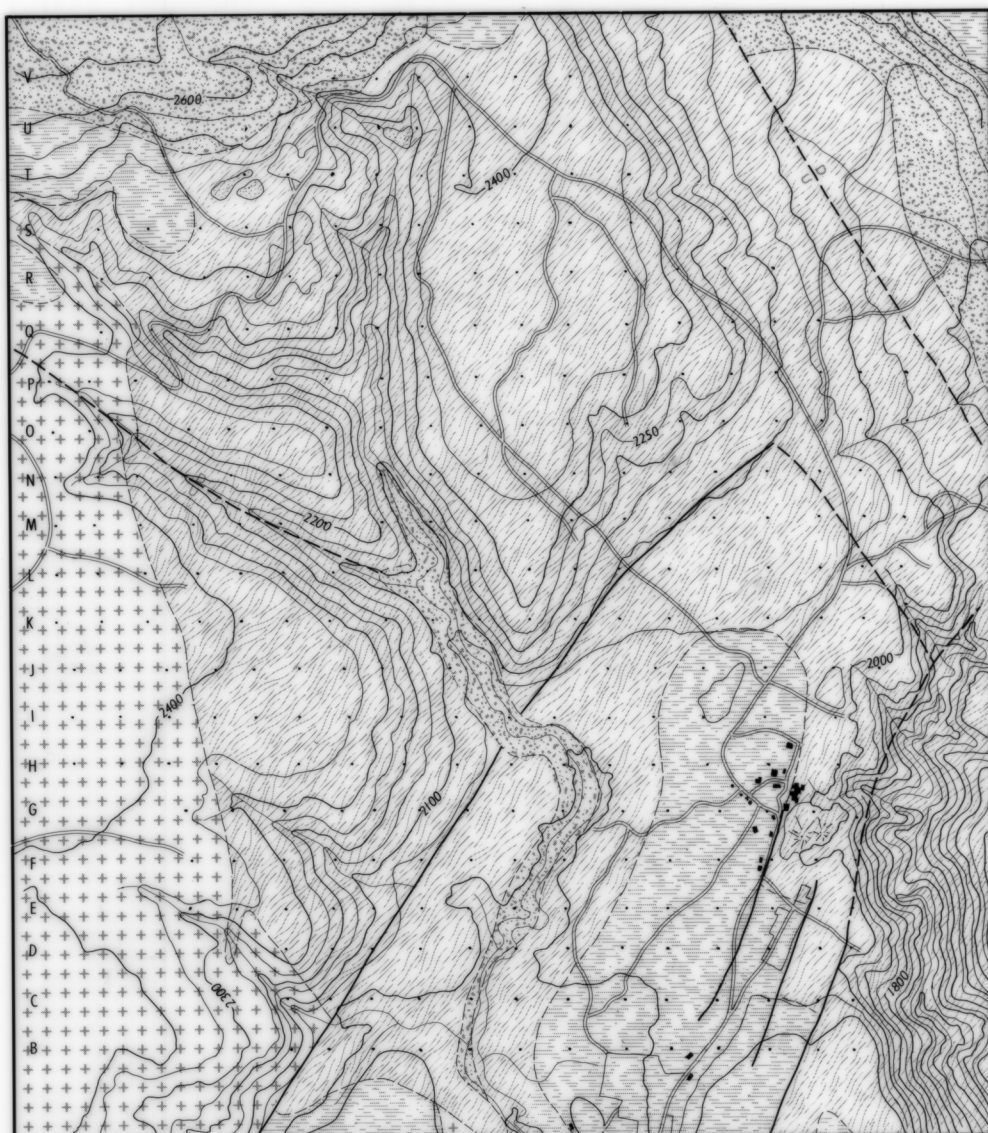


3994A

247

5 cm



GRAVITY SURVEY ROSSARDEN - STOREYS CREEK AREA

GEOLOGY

- Quaternary talus
- Permian sediments
- Devonian granites

- Silurian slates and quartzites
- Fault

0 150 300 m

Contour interval 50 feet

TASMANIA DEPARTMENT OF MINES

3994A

D. E. LEAMAN