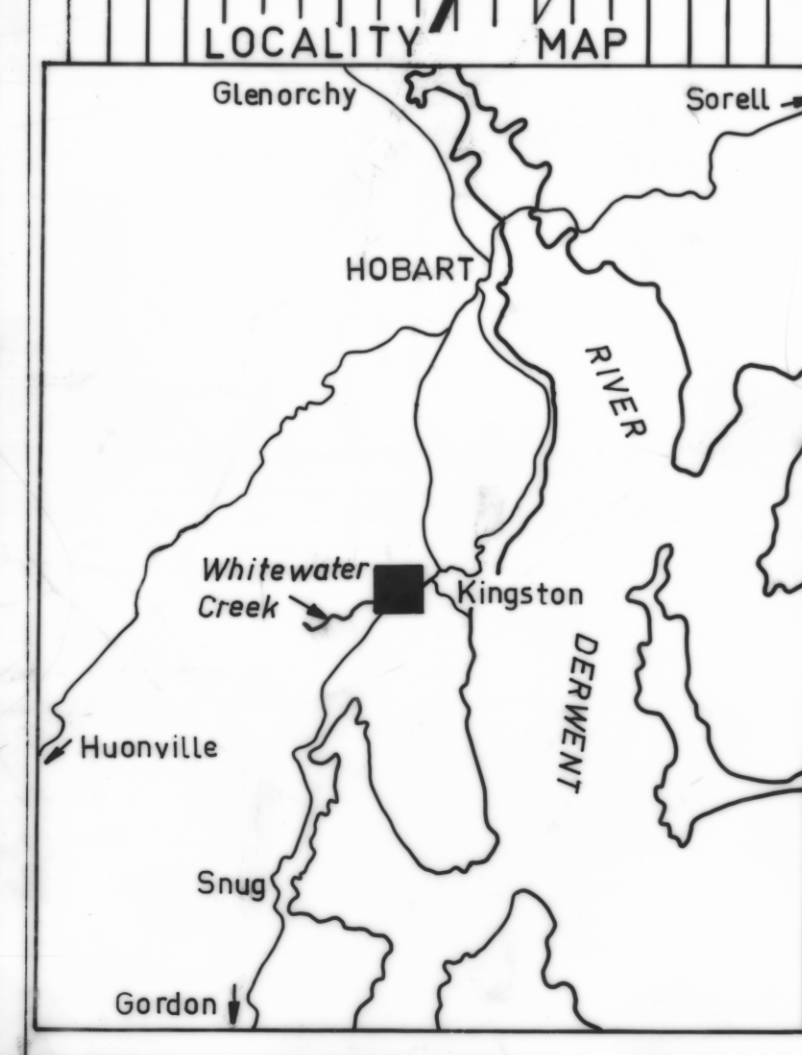
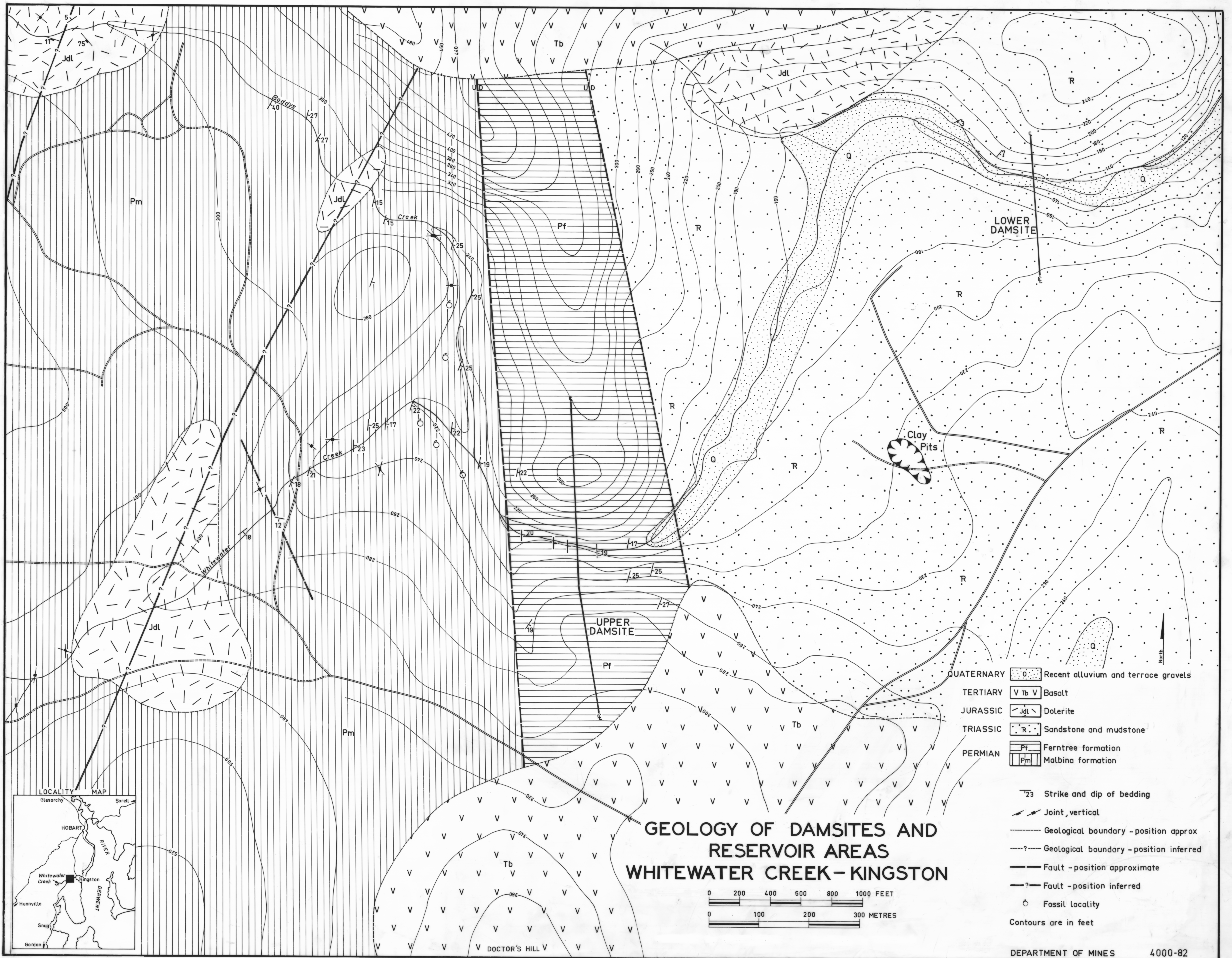
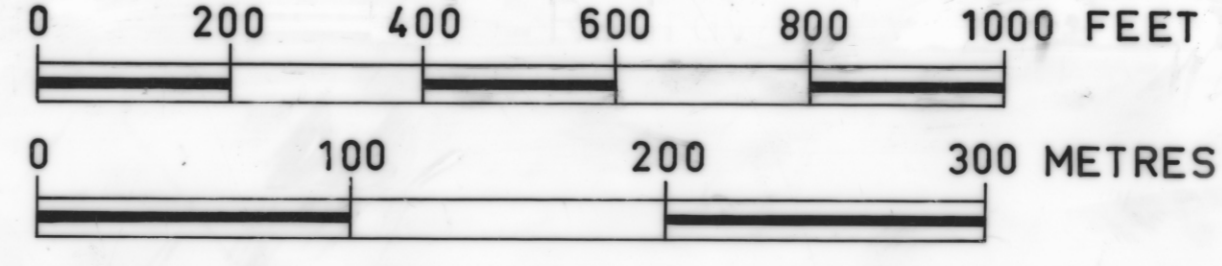


NET S8
 4000
 5 cm



GEOLOGY OF DAMSITES AND RESERVOIR AREAS WHITEWATER CREEK - KINGSTON



- QUATERNARY Recent alluvium and terrace gravels
- TERTIARY Basalt
- JURASSIC Dolerite
- TRIASSIC Sandstone and mudstone
- PERMIAN Fern tree formation
- Malbina formation
- Strike and dip of bedding
- Joint, vertical
- Geological boundary - position approx
- Geological boundary - position inferred
- Fault - position approximate
- Fault - position inferred
- Fossil locality
- Contours are in feet