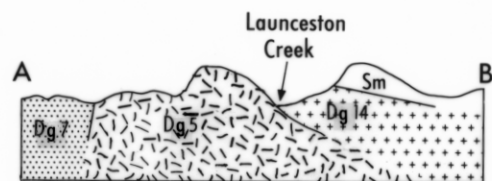


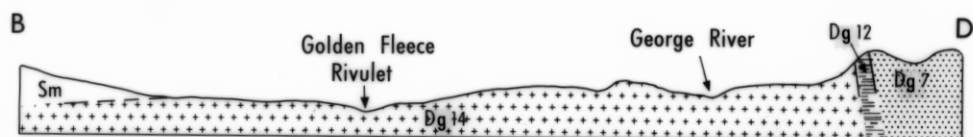
4159

420

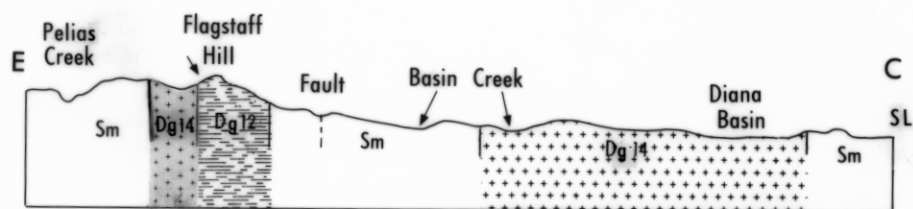
5 cm



SECTION A-B

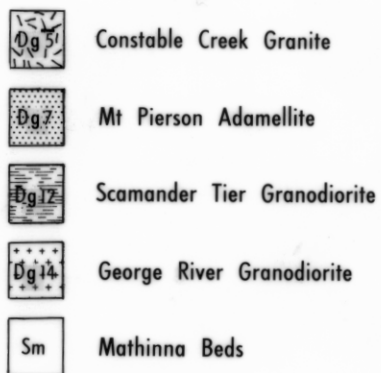


SECTION B-D



SECTION E-C

Key



Scale



GEOLOGICAL SECTIONS, ST HELENS AREA

TASMANIA DEPARTMENT OF MINES, JULY 1976 | GEOLOGIST: J.D. COCKER | DRAWN: J.S. LADANIWSKYJ | 4159