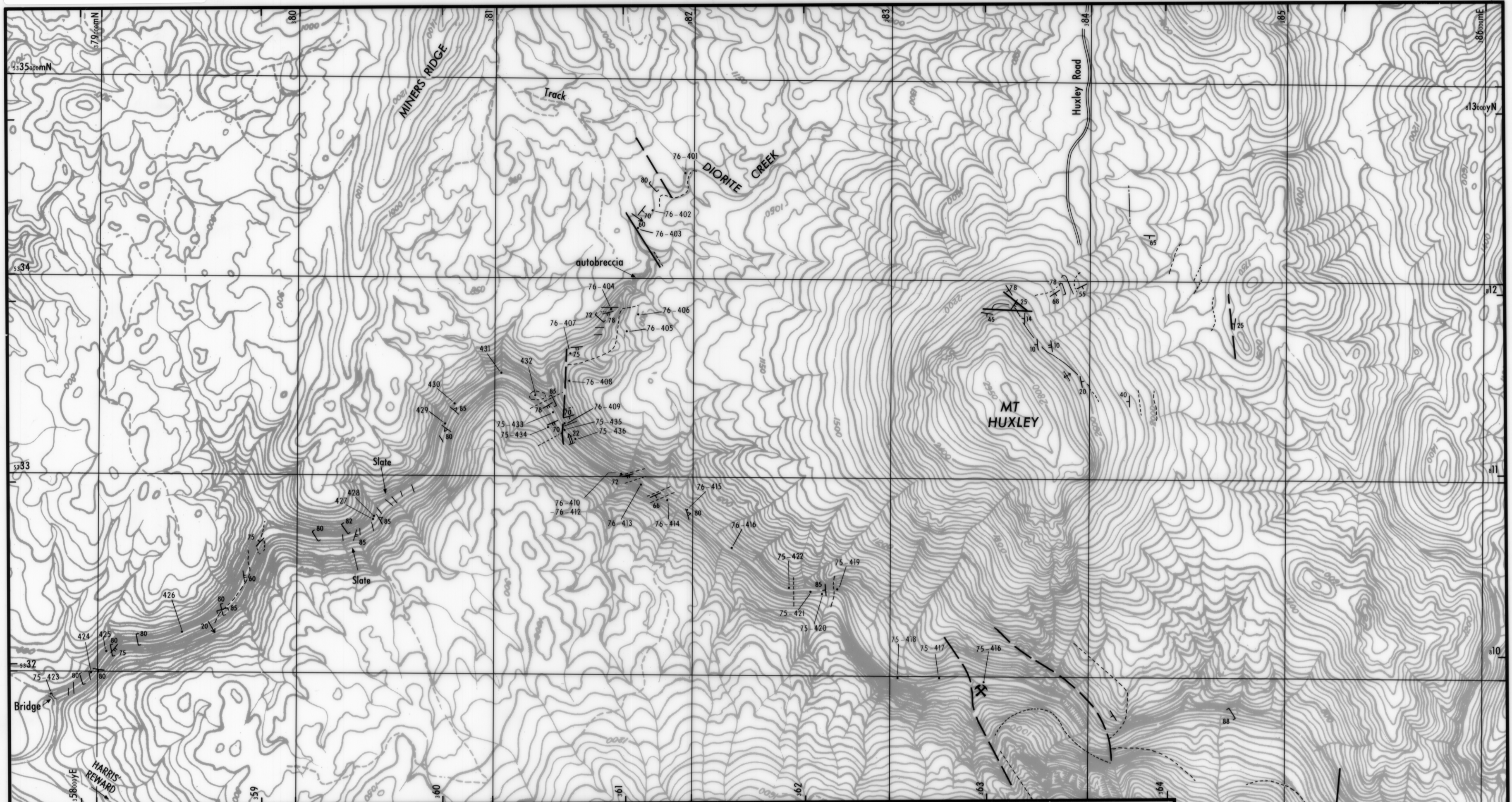


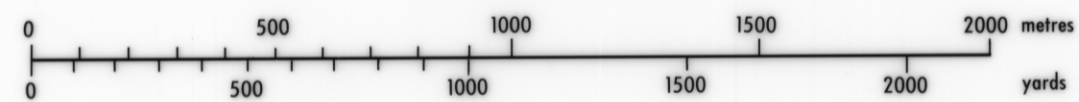
5 cm



TASMANIA DEPARTMENT OF MINES

GEOLOGY OF KING RIVER GORGE

K. D. CORBETT B.Sc. Ph.D.



QUATERNARY

Boulder moraine and scree.

EARLY ORDOVICIAN - CAMBRIAN - ?LATE PRECAMBRIAN

Owen Conglomerate - undifferentiated siliceous conglomerate, sandstone, minor shale.

Undifferentiated volcanoclastic conglomerate and sandstone with quartz-feldspar-phyrlic volcanic rocks.] EASTERN SEQUENCE

Massive, pink to pale-coloured feldspar-porphry, with minor bedded tuff-sandstone-shale units.] CENTRAL SEQUENCE

Basaltic dyke.

Massive quartz-feldspar porphyry (mainly intrusive).

Quartz-feldspar porphyries showing banding or breccia textures indicating extrusive origin.] WESTERN SEQUENCE

Interbedded greywacke, shale and quartz-feldspar-phyrlic tuff

Miners Ridge-type quartz sandstone and interbedded mudstone.

Geological boundary observed or accurate.

Geological boundary approximate.

Fault observed or accurate.

Fault approximate.

Fold axis.

Plunge of minor fold.

Bedding, facing unknown, facing known.

Primary foliation in volcanic rock.

Plunge of columnar jointing.

Cleavage.

Prospect.

76-413 Location of specimen number referred to in text.

