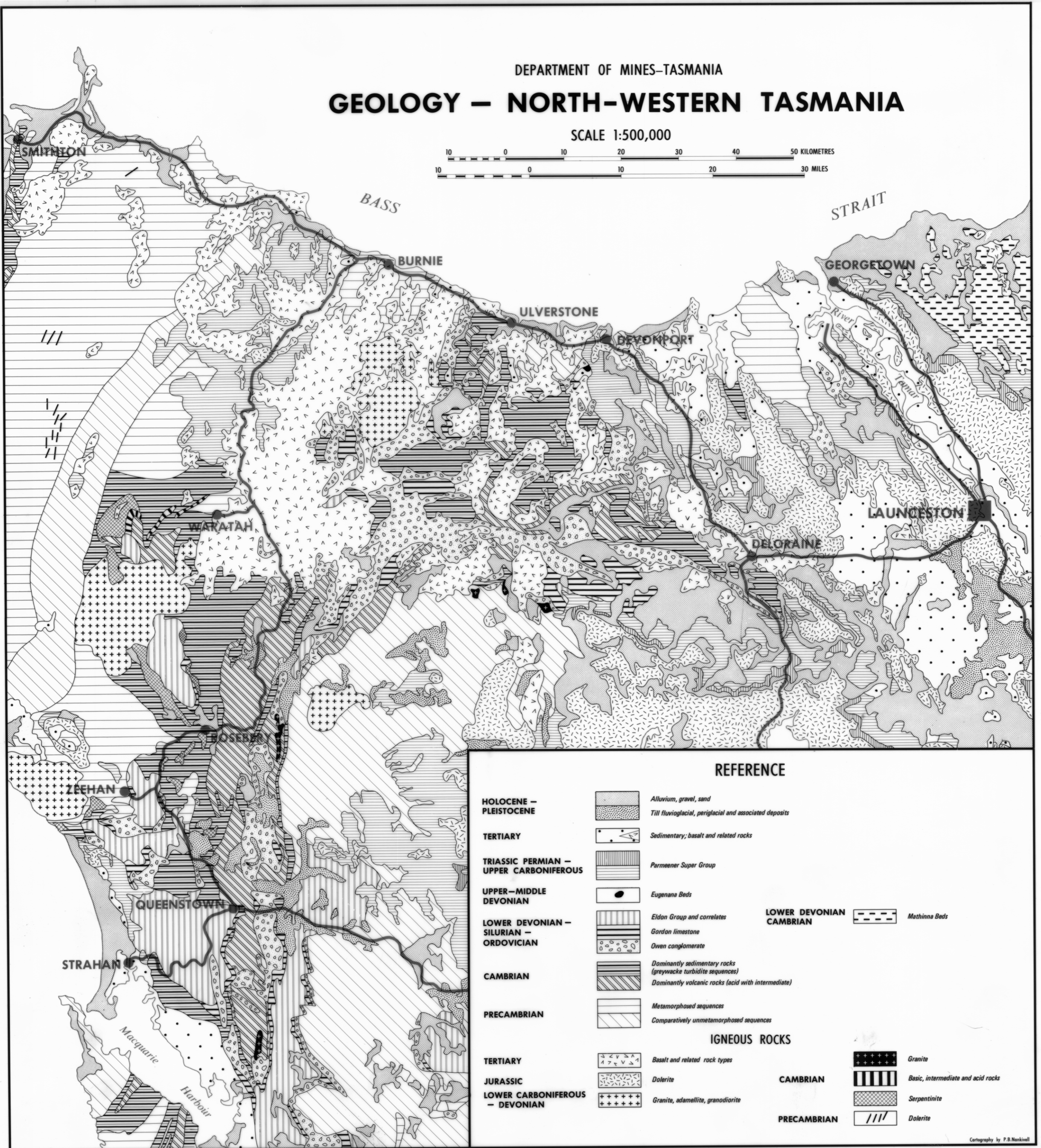
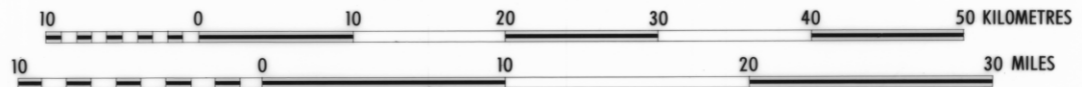


DEPARTMENT OF MINES-TASMANIA

GEOLOGY — NORTH-WESTERN TASMANIA

SCALE 1:500,000



REFERENCE

HOLOCENE — PLEISTOCENE

- Alluvium, gravel, sand
- Till fluvioglacial, periglacial and associated deposits

TERTIARY

- Sedimentary, basalt and related rocks

TRIASSIC PERMIAN — UPPER CARBONIFEROUS

- Permian Super Group

UPPER — MIDDLE DEVONIAN

- Eugenana Beds

LOWER DEVONIAN — SILURIAN — ORDOVICIAN

- Eldon Group and correlates
- Gordon limestone
- Owen conglomerate

CAMBRIAN

- Dominantly sedimentary rocks (greywacke turbidite sequences)
- Dominantly volcanic rocks (acid with intermediate)

PRECAMBRIAN

- Metamorphosed sequences
- Comparatively unmetamorphosed sequences

LOWER DEVONIAN CAMBRIAN

- Mathinna Beds

IGNEOUS ROCKS

TERTIARY

- Basalt and related rock types

JURASSIC

- Dolerite

LOWER CARBONIFEROUS — DEVONIAN

- Granite, adamellite, granodiorite

Granite

CAMBRIAN Basic, intermediate and acid rocks

Serpentine

PRECAMBRIAN Dolerite