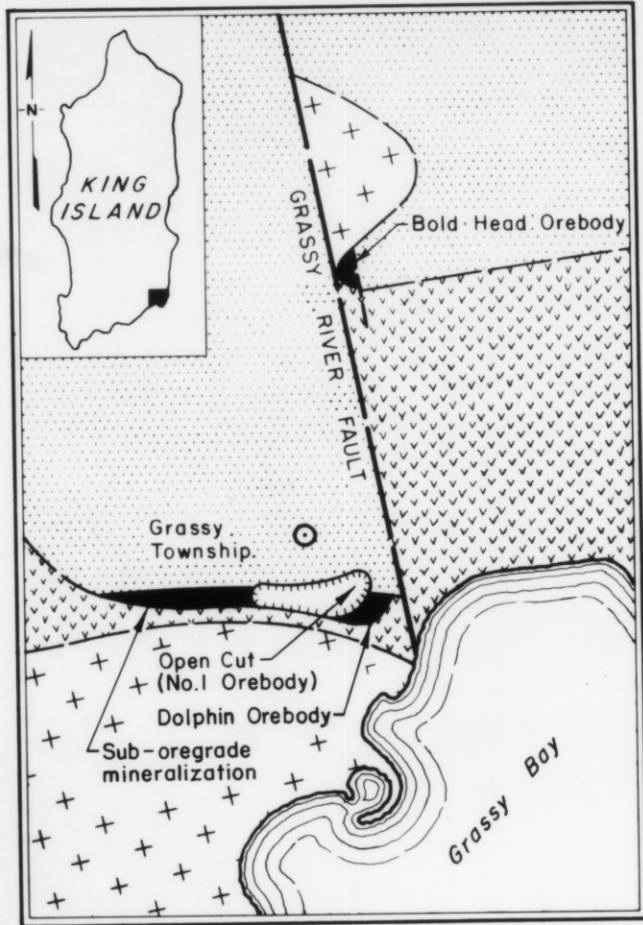


5 cm



- Lower Carboniferous + Grassy granodiorite  
Bold Head adamellite
- Middle (?) Cambrian   Volcanics
- Upper Proterozoic to Lower Cambrian   Grassy Group (mine series)
- Sandstone-Siltstone unit

0.5 0 0.5 1.0 1.5  
KILOMETRES

0 1 2  
MILES

Fig.6- Geology of Southeast King Island.

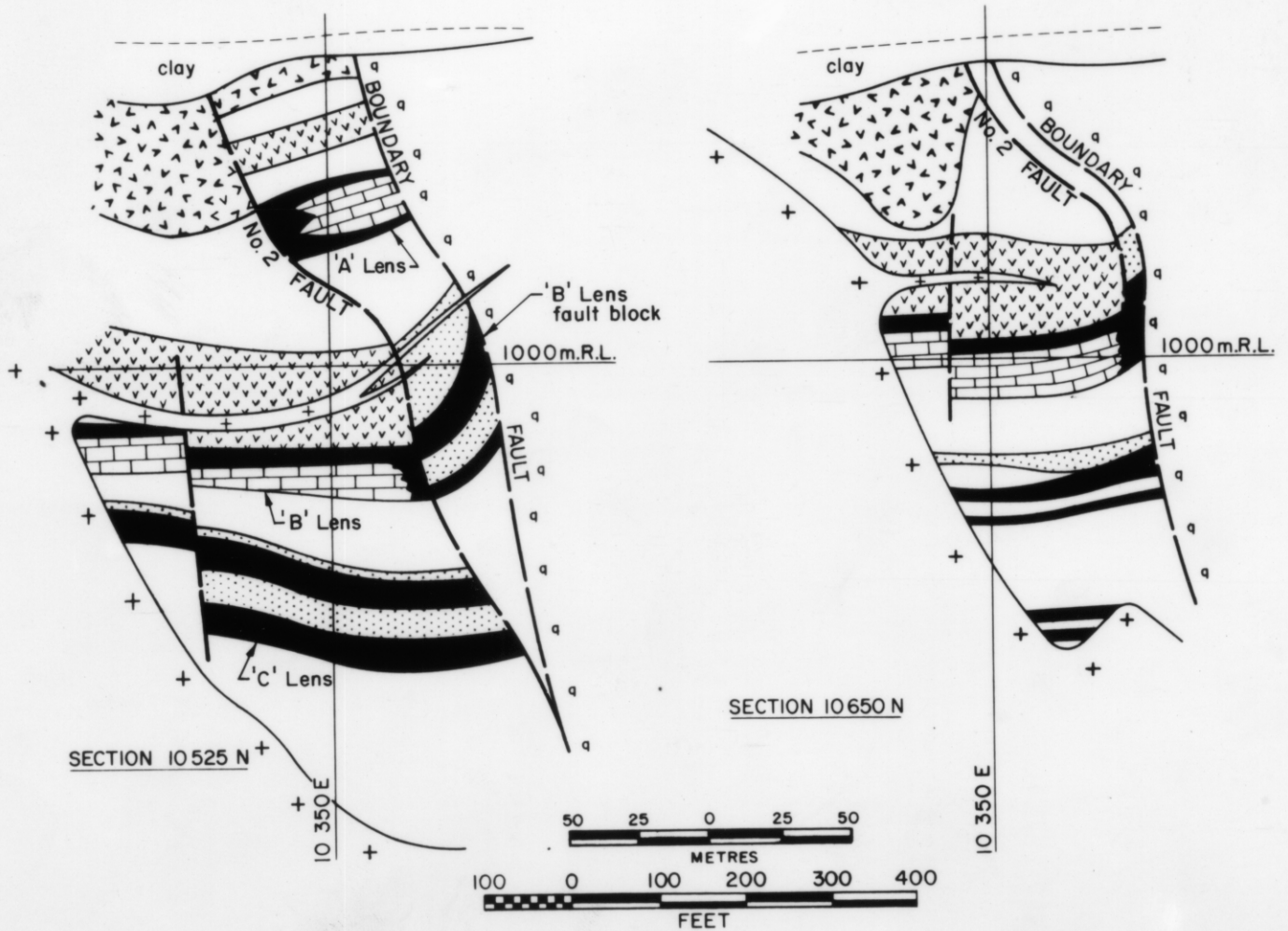


Fig. 7- Geological Cross Sections of the Bold Head Orebody. For legend see Fig.8.

4264 D

(M.J. Danielson and S.G. Brown 1976)

574

4264 D