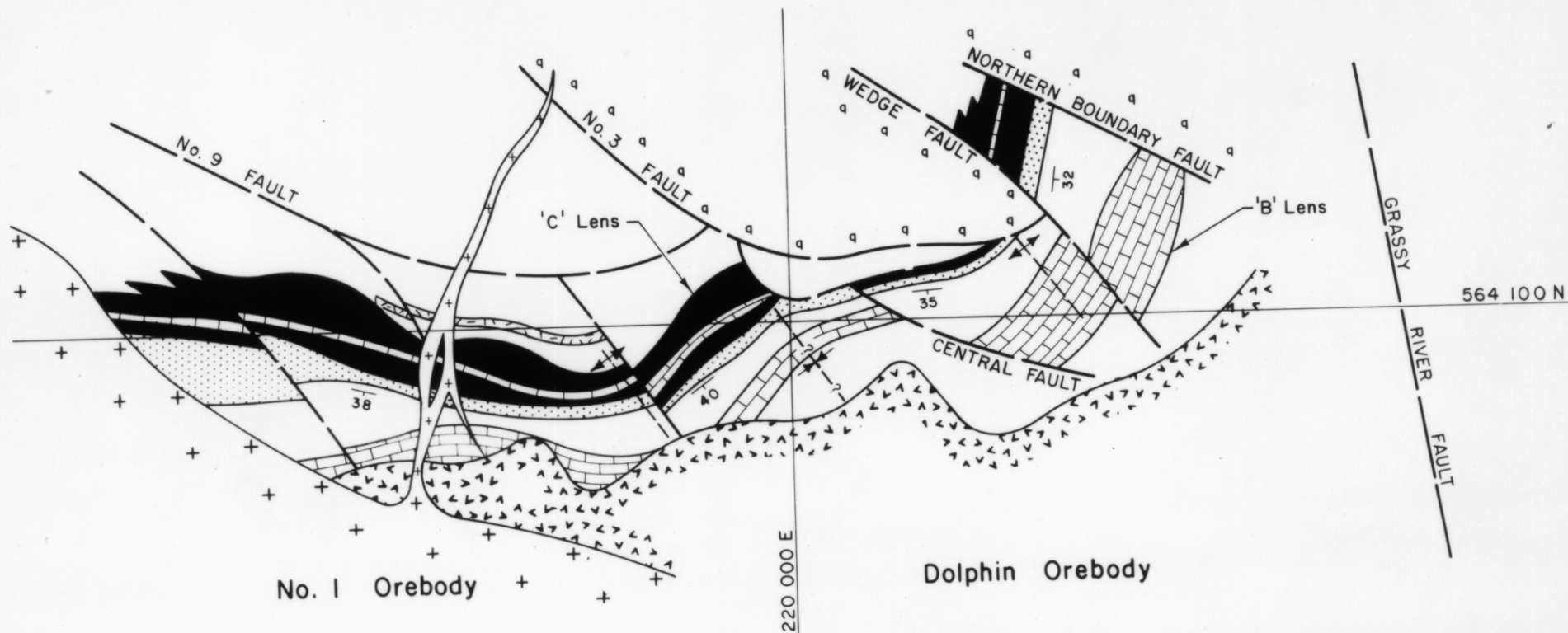
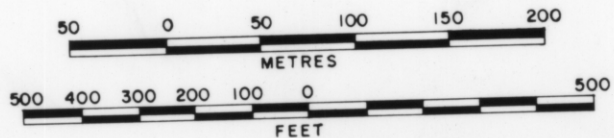


5 cm



LEGEND: (Figures 7 and 8)

- |  |                                  |  |                             |  |                     |
|--|----------------------------------|--|-----------------------------|--|---------------------|
|  | Upper metavolcanics              |  | Garnet hornfels (Scheelite) |  | Strike and dip      |
|  | Middle metavolcanics (Bold Head) |  | Lower metavolcanics         |  | Syncline (inferred) |
|  | Calcite hornfels                 |  | Quartzite                   |  | Anticline           |
|  | Pyroxene garnet hornfels         |  | Granodiorite / Adamellite   |  |                     |



No. 1 and Dolphin Orebodies - 75 m. R.L. Geological Level Plan

(M.J. Danielson and S.G. Aronson 1976)

4264 E

575

4264 E