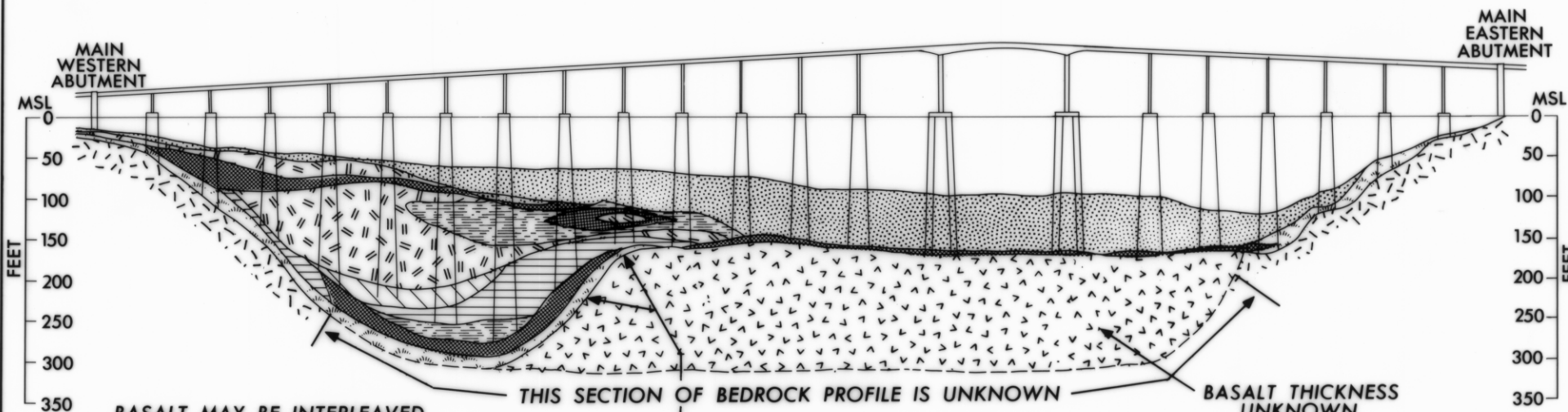


4282

598

5 cm

TASMAN BRIDGE - SECTION

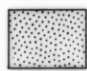
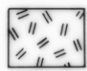

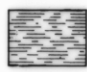
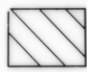
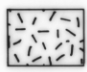


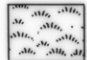


BASALT MAY BE INTERLEAVED WITH SEDIMENTS AND MAY NOT BE A SINGLE COHERENT MASS

THIS SECTION OF BEDROCK PROFILE IS UNKNOWN

BASALT THICKNESS UNKNOWN

Geology by D.E.Leaman
Adapted from Trollope, Freeman and Peck 1966

- | | | |
|--|--|--|
|  Silt |  Clay |  Basalt |
|  Sand |  Clay loam |  Dolerite |
|  Gravel |  Sandy loam |  Soft rock or decomposed dolerite or basalt |