

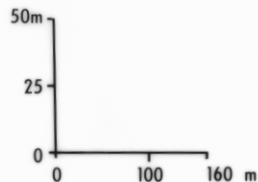
4283A

599

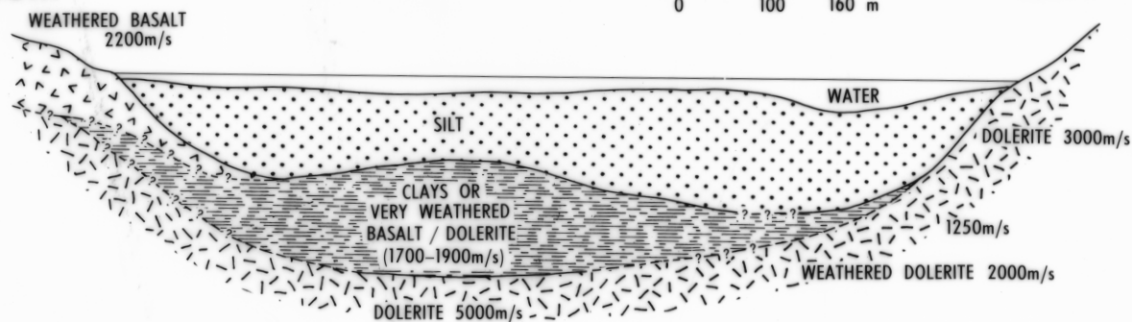
5 cm

SECTION : CENTRE AREA 2

SOUTH

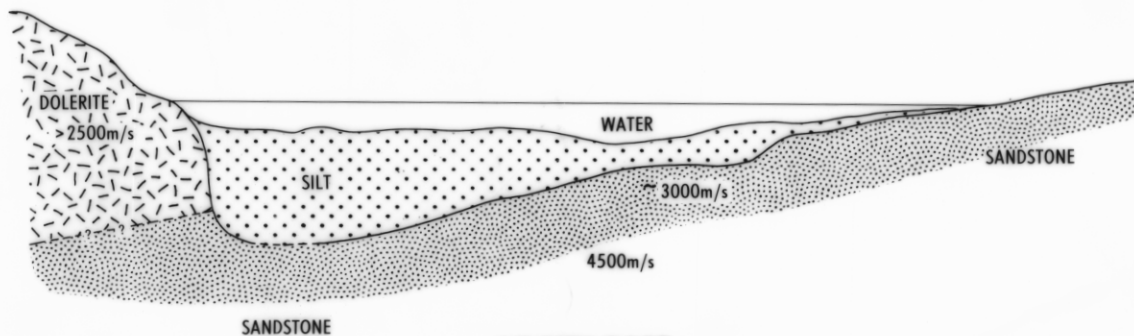


NORTH



NOTE : WEDGE OF 1700-1900m/s MATERIAL
TOWARD ELWICK BAY AND THINS TO THE EAST.

SECTION : CENTRE AREA 1



SECTIONS
SEISMIC INTERPRETATION
RIVER DERWENT : DOWSINGS POINT REGION

Geophysics by D.E.LEAMAN

April 1975