

5 cm

5,408,950 m.N.

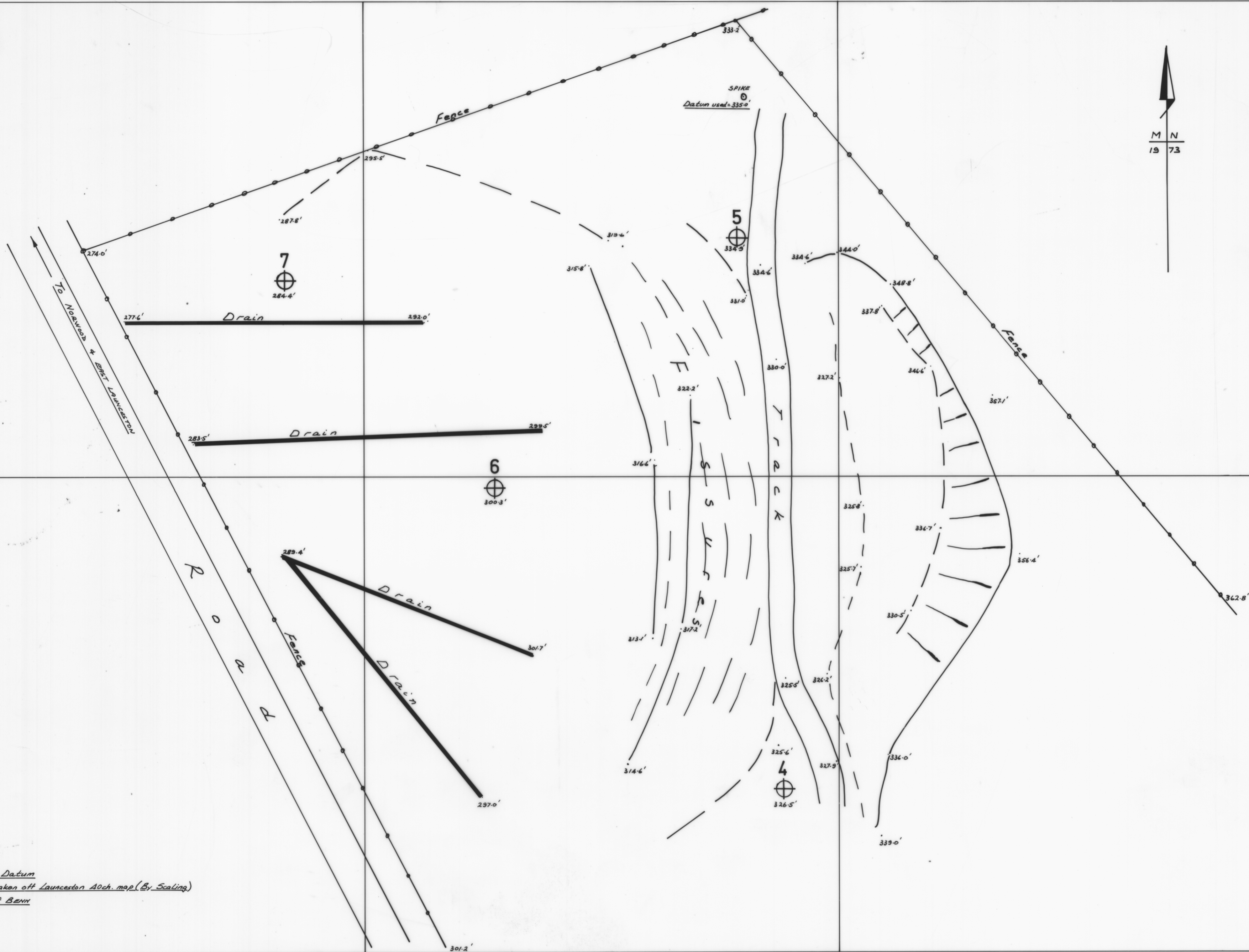
5,408,900 m.N.

5,408,850 m.N.
515,600 m.E.

515,650 m.E.

515,700 m.E.

515,750 m.E.



SPIKE Taken as Datum
Contours & Level taken off Launceston Aoch. map (By Scaling)
Surveyed by G. B. BERRY

ST. LEONARDS SLIP 'A'

Scale 1:250

1-8-73

DEPT. OF MINES