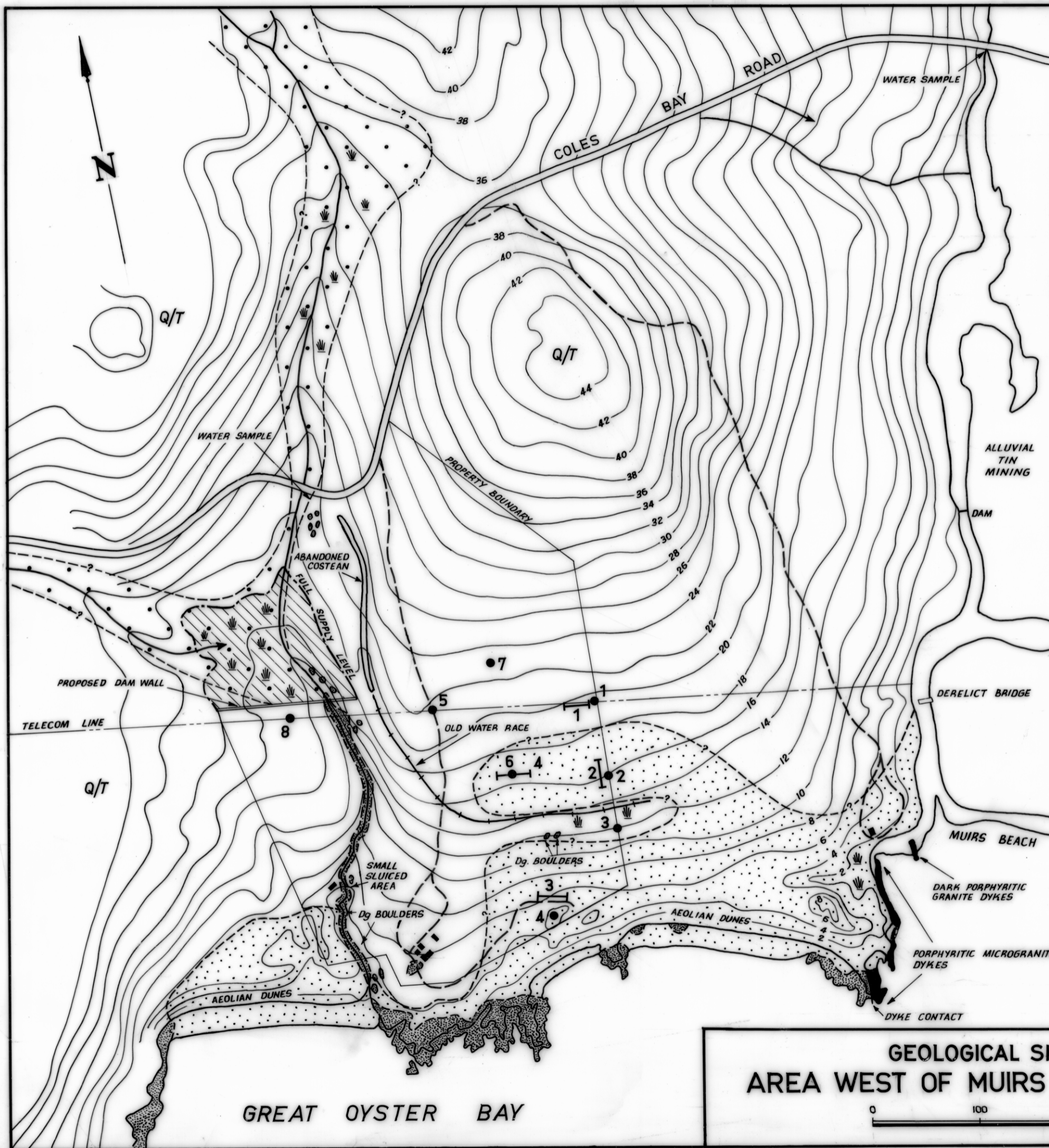


4374

723

5 cm



LEGEND

QUATERNARY

- CREEK DEPOSITS, INCLUDING DARK SANDYORGANIC AND PEATY SOILS.
- AEOLIAN DUNE AND BLANKET SAND INCLUDING RECENT BEACH SAND.

QUATERNARY/TERTIARY

- SAND, CLAY AND QUARTZ GRIT AND GRAVEL DEVELOPED ON DEVONIAN GRANITE.

DEVONIAN

- PINK, RED AND DARK GREY PORPHYRITIC MICROGRANITE DYKE ROCKS.
- COARSE GRAINED PINK GRANITE.

--- APPROXIMATE GEOLOGICAL BOUNDARY.

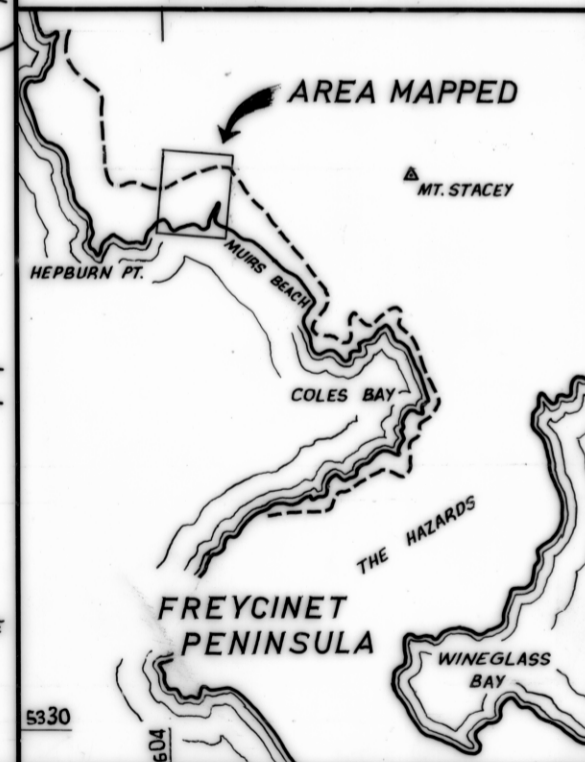
- - - INFERRED GEOLOGICAL BOUNDARY

● 1 AUGER HOLE

— 2 SEISMIC SPREAD

CONTOUR INTERVAL 2 METRES

LOCALITY MAP



GEOLOGICAL SKETCH MAP AREA WEST OF MUIRS BEACH — COLES BAY

0 100 200 300 m.

REDUCE TO 190 mm

Fig. 1