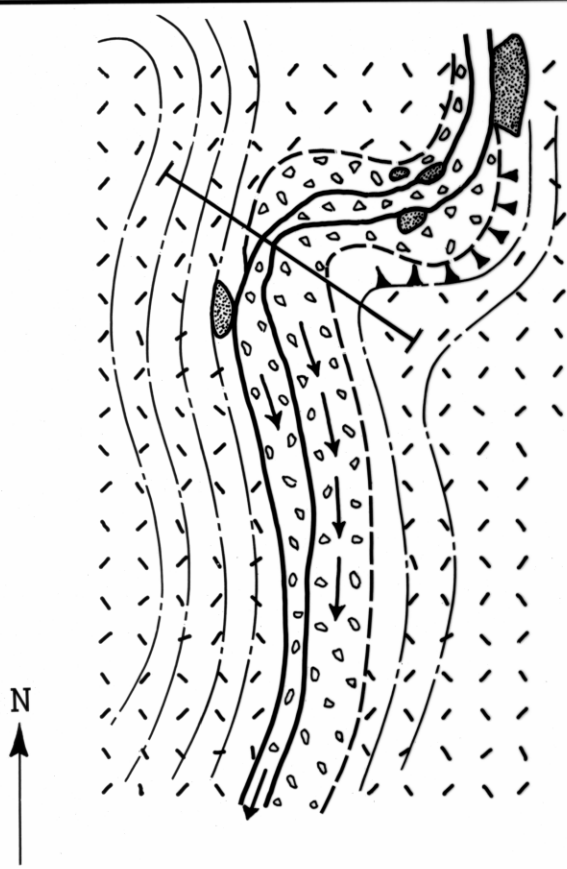
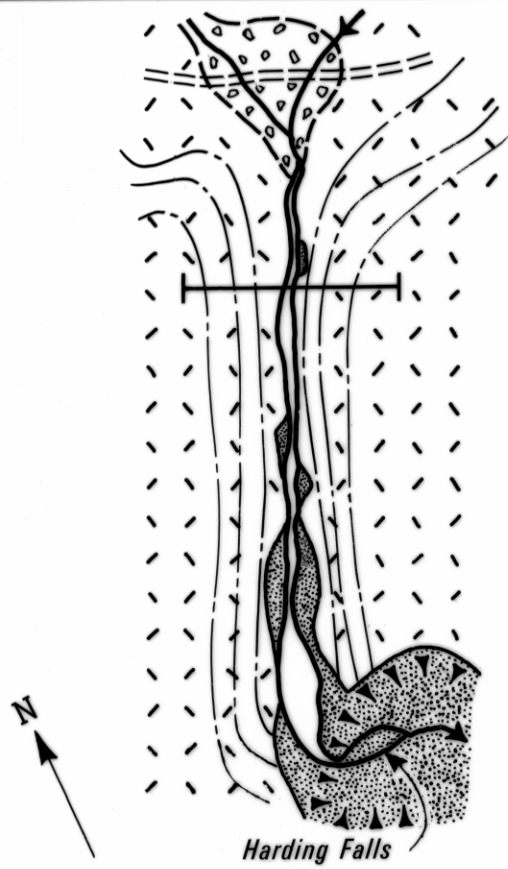


5 cm

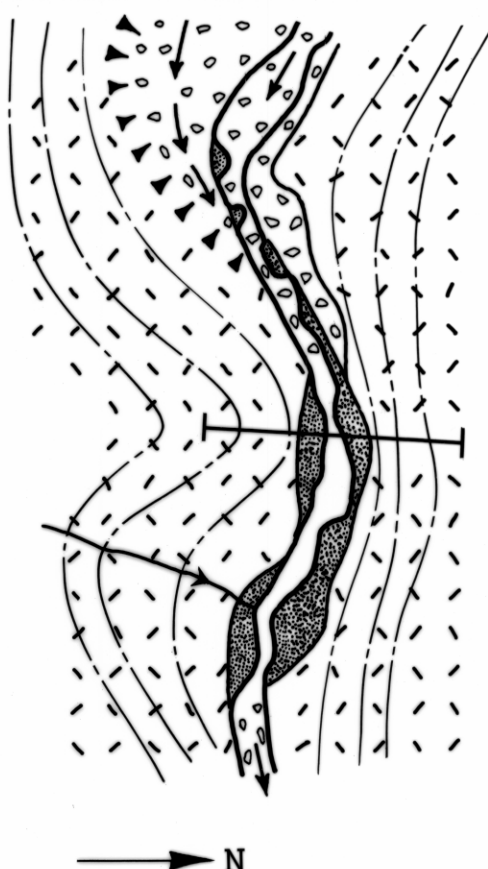
1. DOUGLAS RIVER
EP 008804



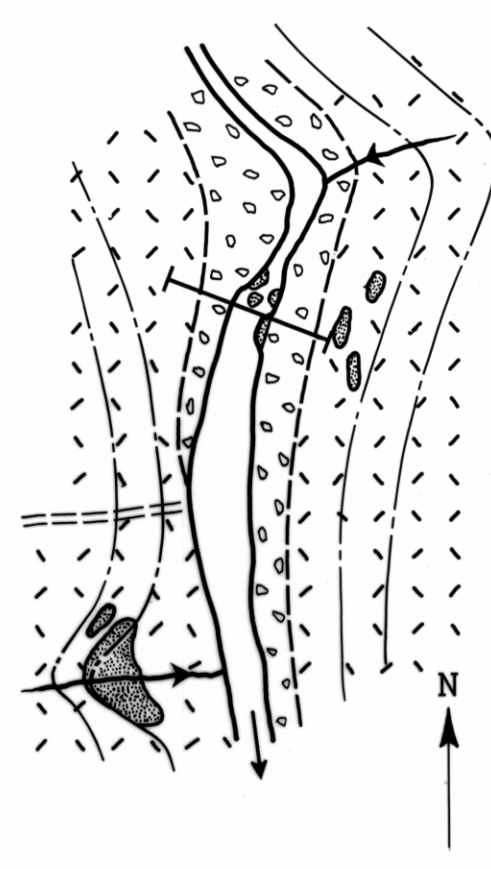
2. SWAN RIVER
EP 912663



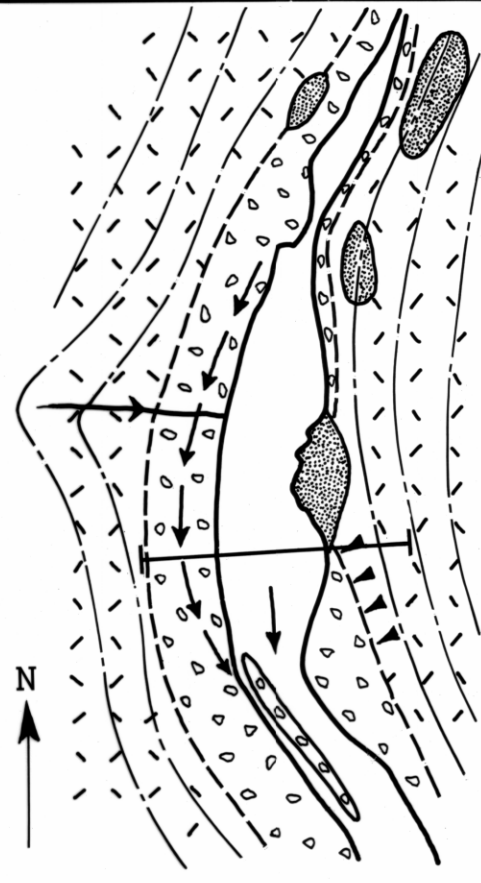
3. APSLEY RIVER
EP 954655



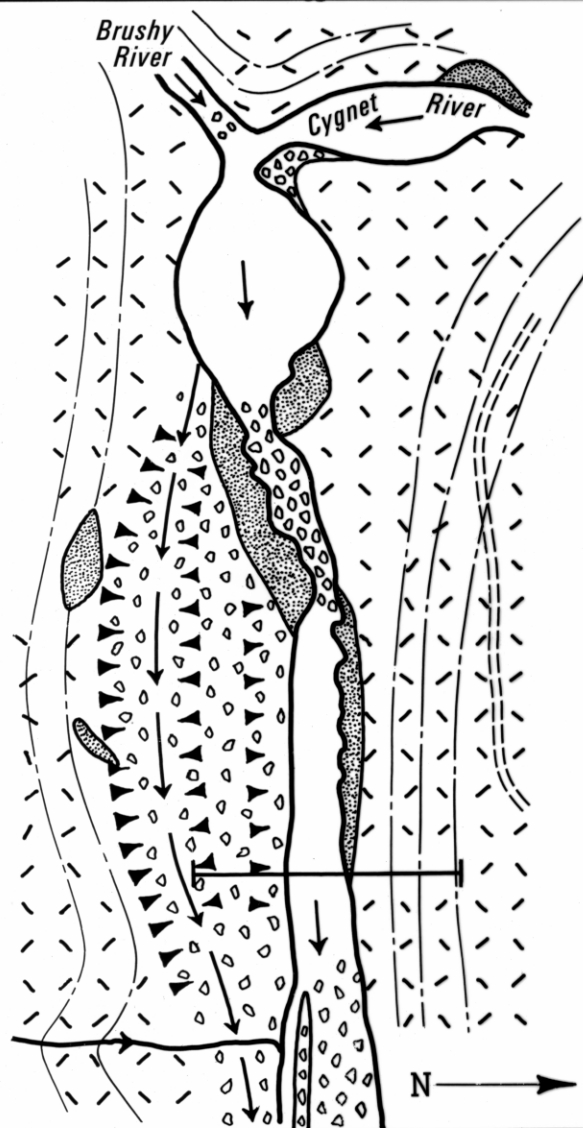
5. APSLEY RIVER
EP 038637



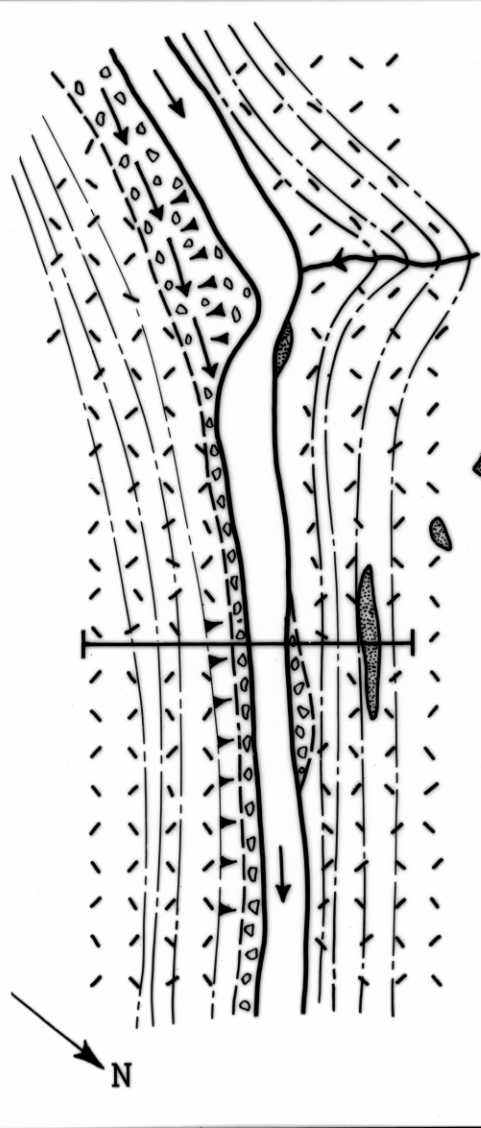
6. SWAN RIVER
EP 891527



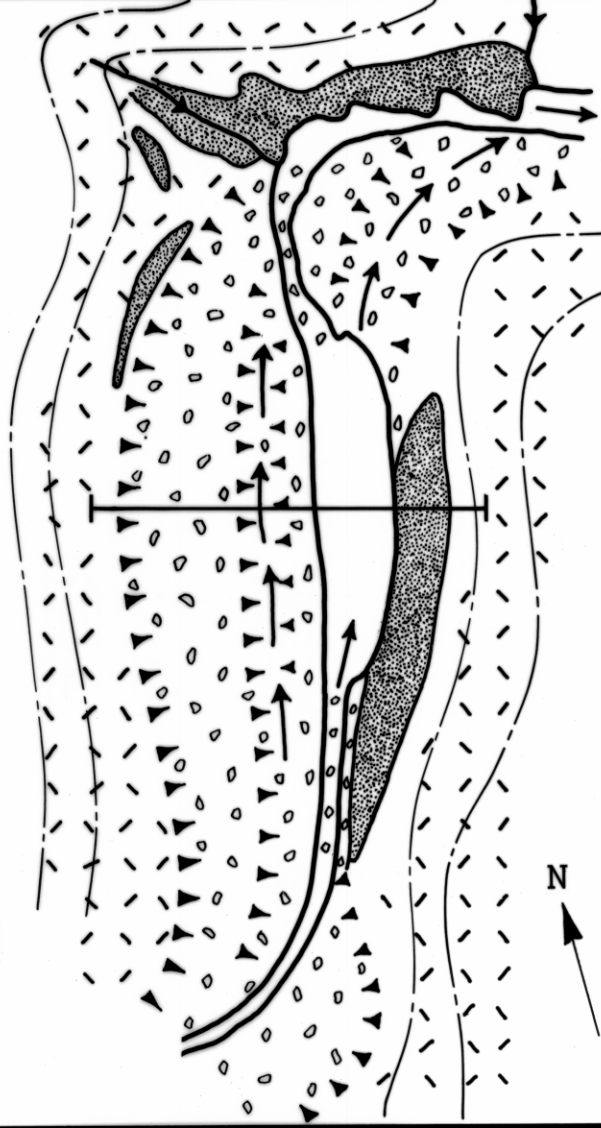
7. CYGNET RIVER
EP 853491



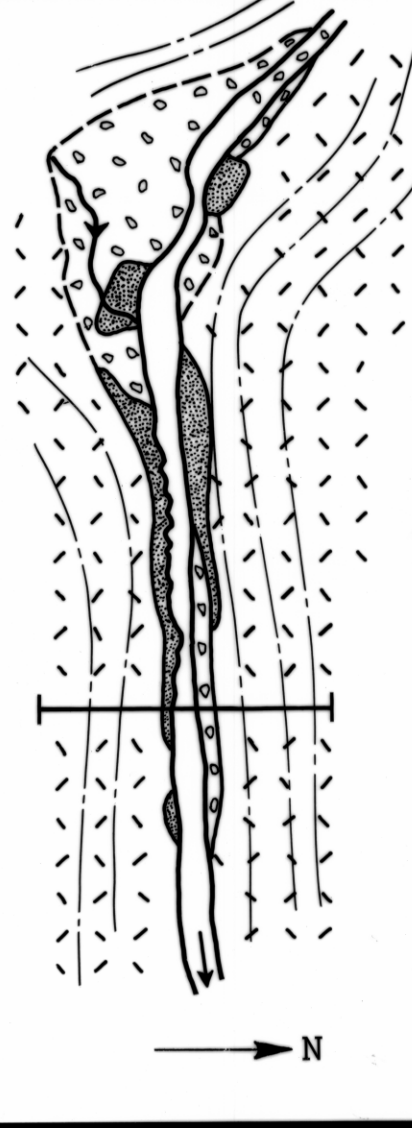
8. WYE RIVER
EP 849413



9. MEREDITH RIVER
EP 849355



10. WYE RIVER
EP 803408



GEOLOGICAL SKETCH MAP
PROPOSED DAM SITES -
EAST COAST

W.C. CROMER
FEB 1978

0 50 100m.

APPROXIMATE SCALE

QUATERNARY

Dolerite river gravels and boulders, with occasional interbedded alluvium.

Dolerite scree and talus.

JURASSIC

Dolerite, in situ.

Form lines.

Present river course.

Former river channel.

Escarpment, usually at rear of river terrace.

Approximate position of proposed dam.

Road.

REDUCE TO 160 mm

B

A