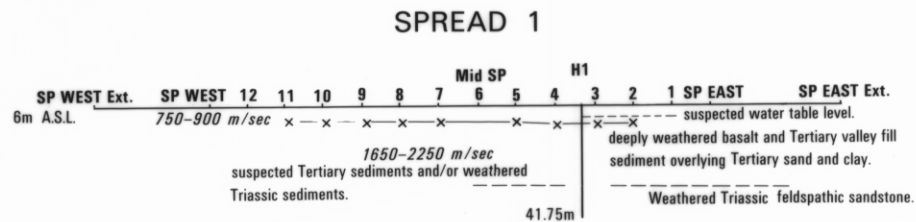
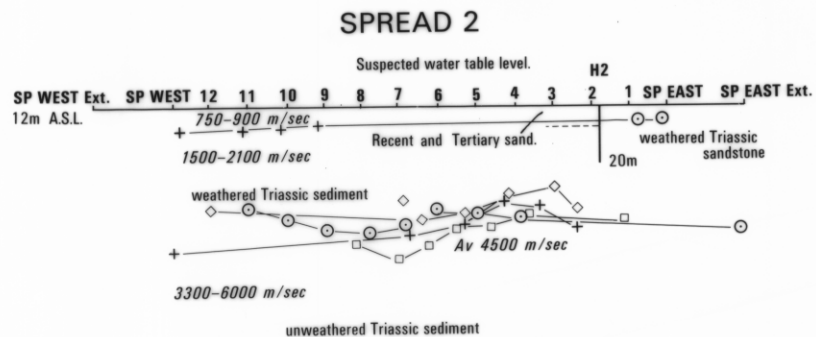
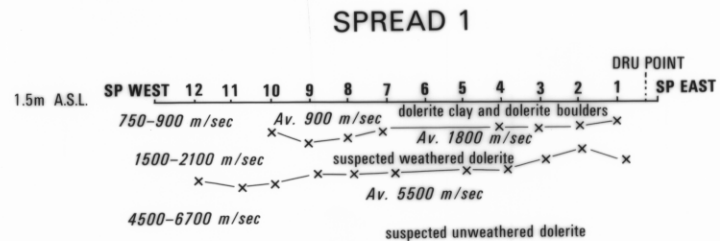
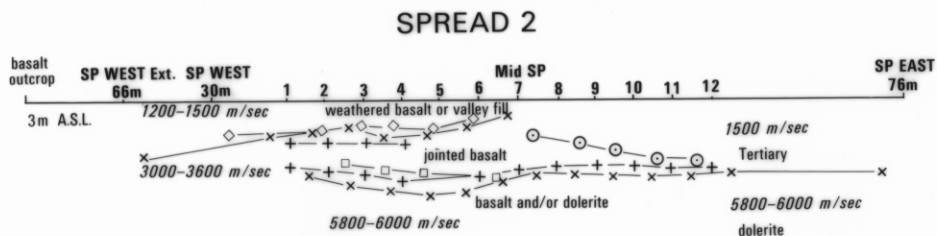


5 cm

### HOWDEN ROAD-NORTH WEST BAY



### MARGATE RESERVE-DRU POINT



- 1 2 3 4
- SP
- + — +
- — ○
- x — x

- Geophone position and number.
- Shot point position.
- Calculated shot point depth.
- Depth of velocity layer calculated by time-delay method.
- Depth of velocity layer calculated by time-depth method.

0 30 metres

TASMANIA, DEPARTMENT OF MINES

Figure 22

4404 AG

766

4404 AG