

OAKLEIGH CREEK MINE

(Mt Pelion Mine)

SEISMIC SURVEY

0 20 40 60 80 100 metres

P. C. Stevenson and P. L. F. Collins

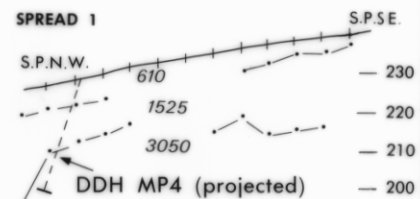
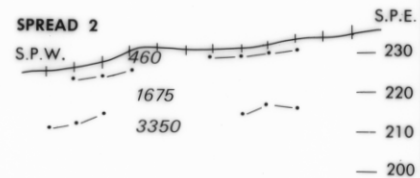
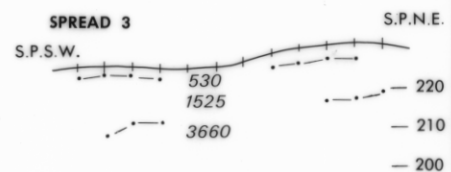
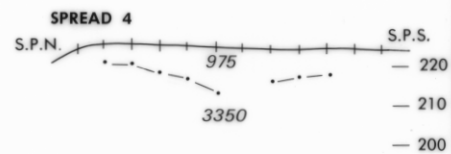
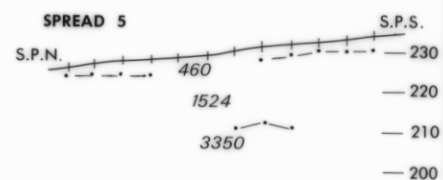
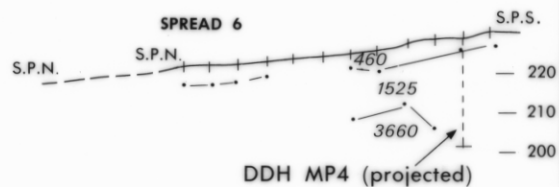
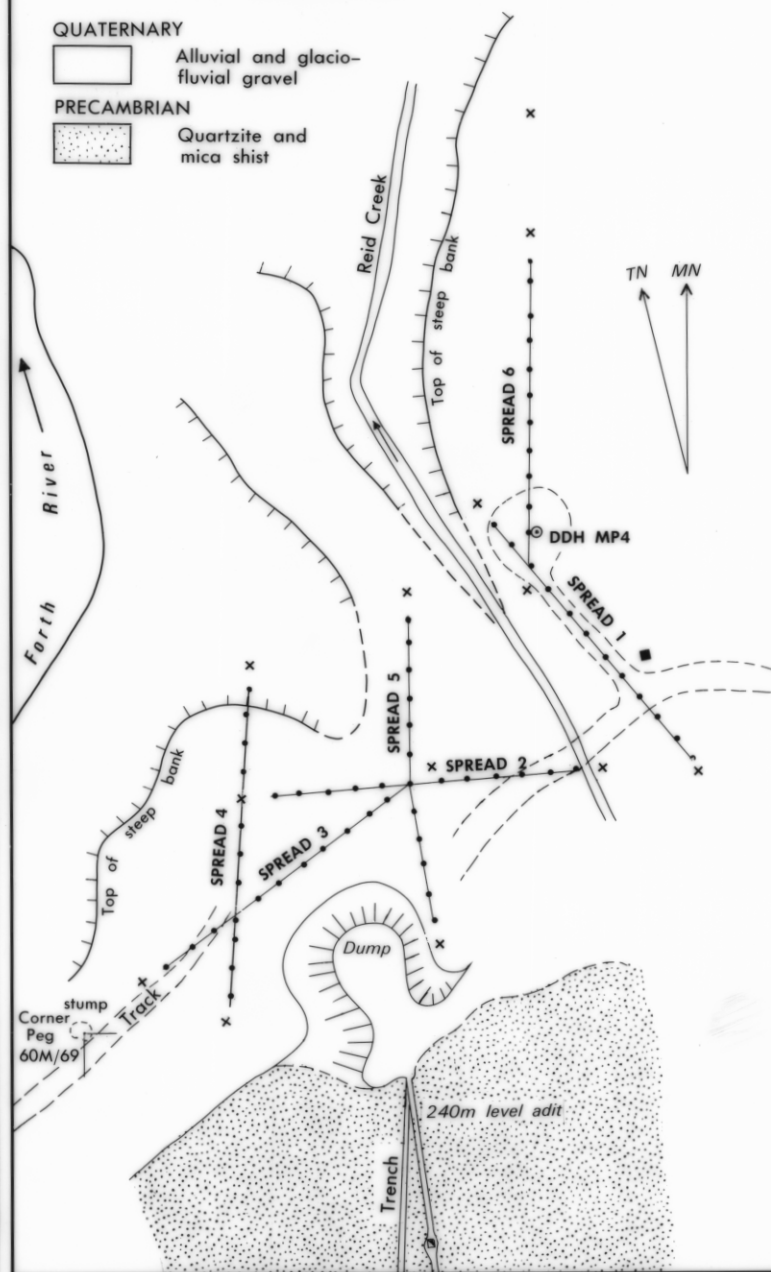
—•—•—• x Seismic spread, shot point

QUATERNARY

□ Alluvial and glacio-fluvial gravel

PRECAMBRIAN

▨ Quartzite and mica schist



Seismic velocities in metres/sec

4460

832

5 cm