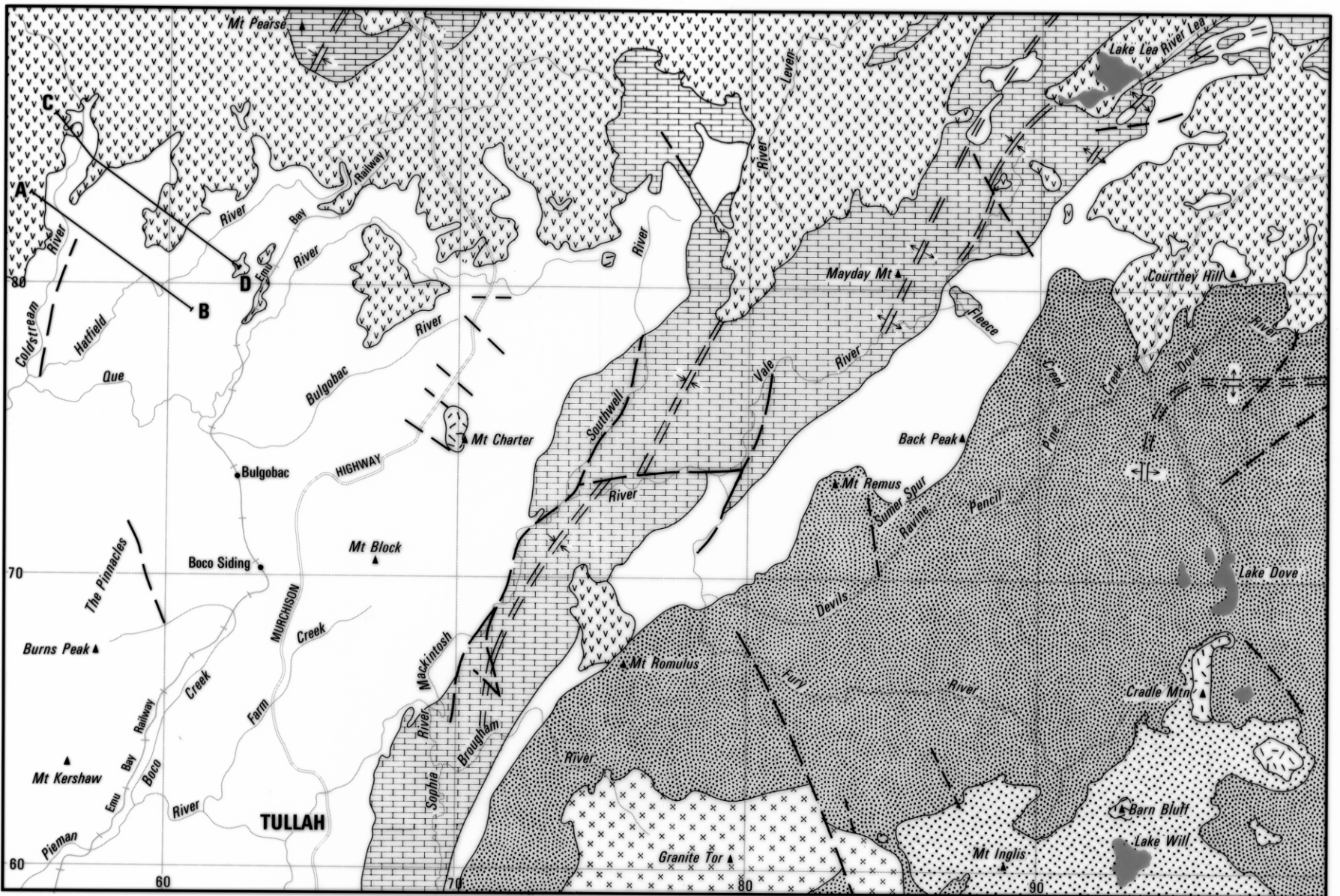

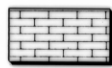
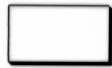



5 cm


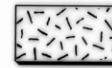



0 5 10 km


REFERENCE

-  Permian; glacio-marine and freshwater sequences.
-  Ordovician - Silurian dominantly siliceous clastic and limestone sequences.
-  Cambrian; dominantly volcanic rocks, volcani-clastic and turbidite sequences.
-  Precambrian; dominantly metaquartzite phyllite and schist.

Igneous Rocks

-  Tertiary basalt.
-  Jurassic dolerite.
-  Devonian granite.


 Fault.

 Hinge line of major folds - syncline, anticline.

A — B

C — D

(Cross-sections in Figure 5).

 Geological boundary