

MINER'S EXPLOSIVES BOX

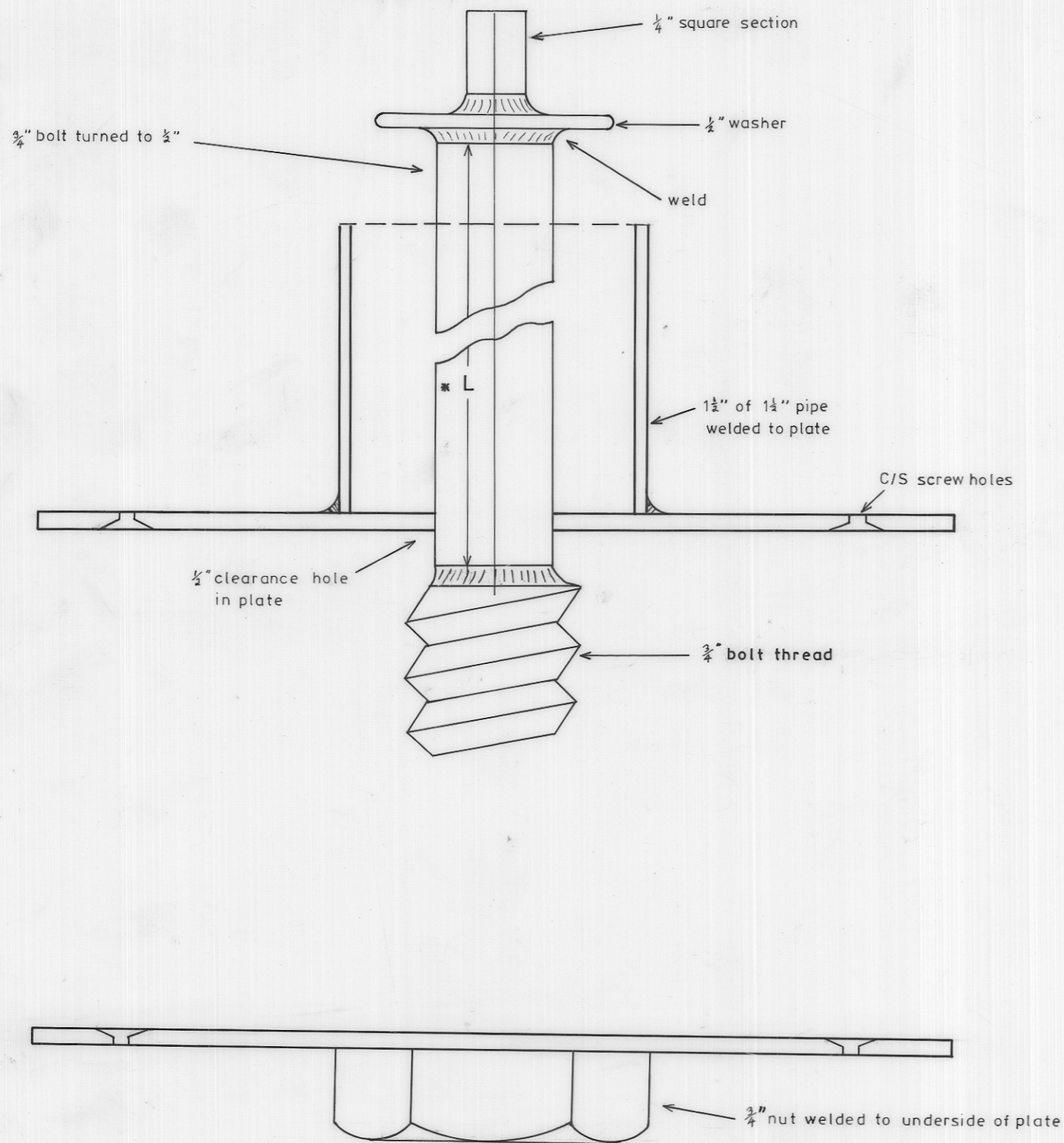
for 25 Kg of Explosives or 110 detonators

(Figures in brackets are mm)

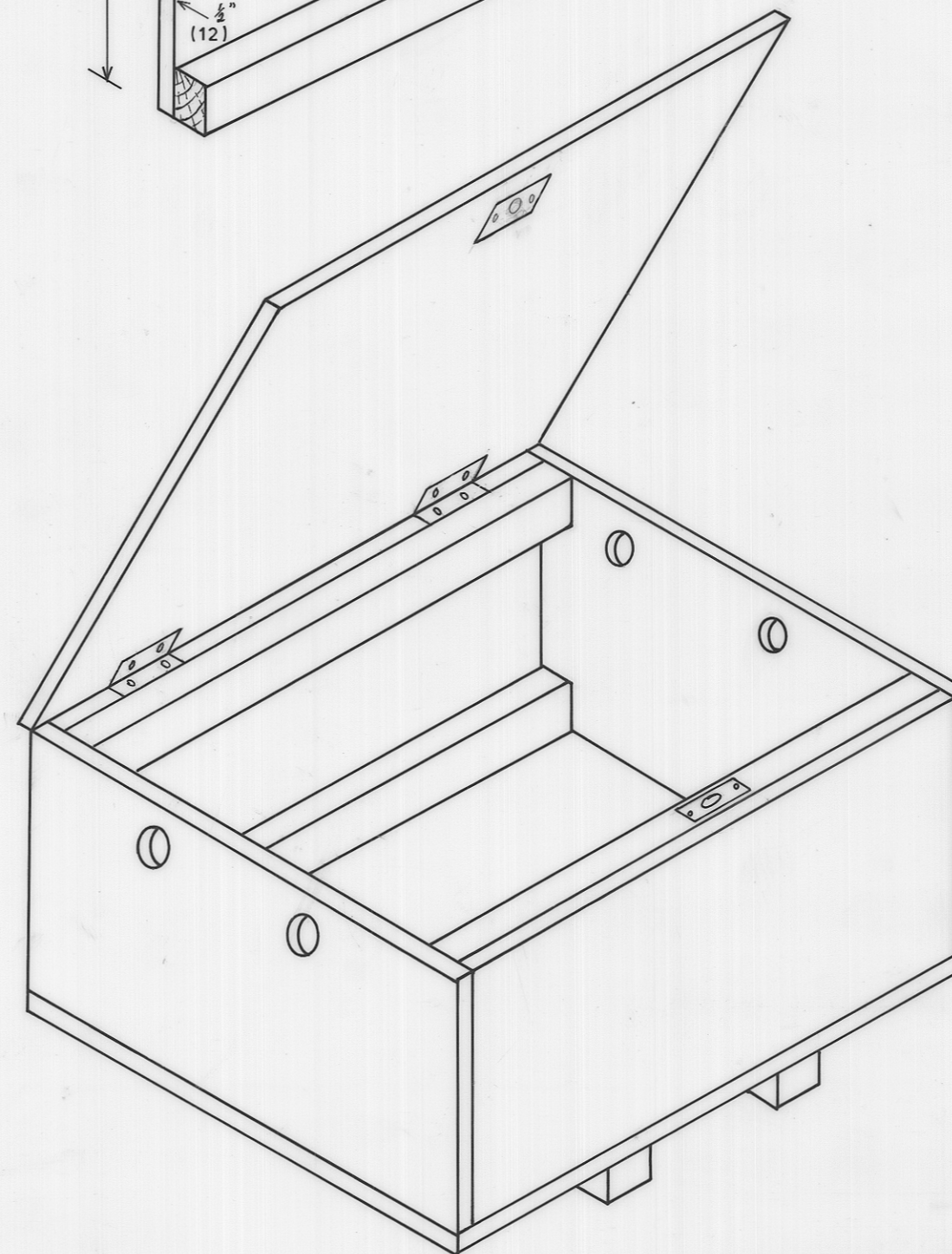
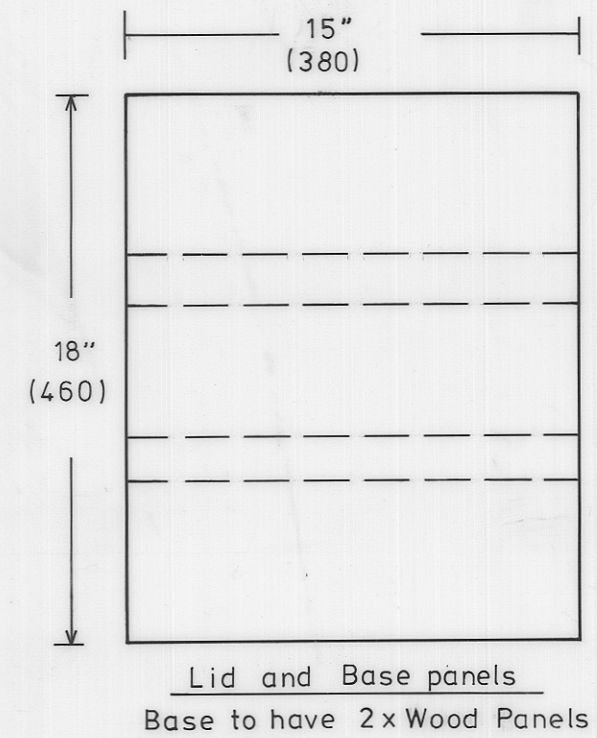
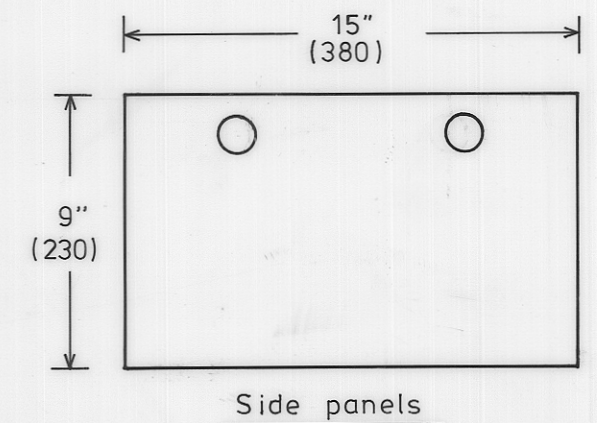
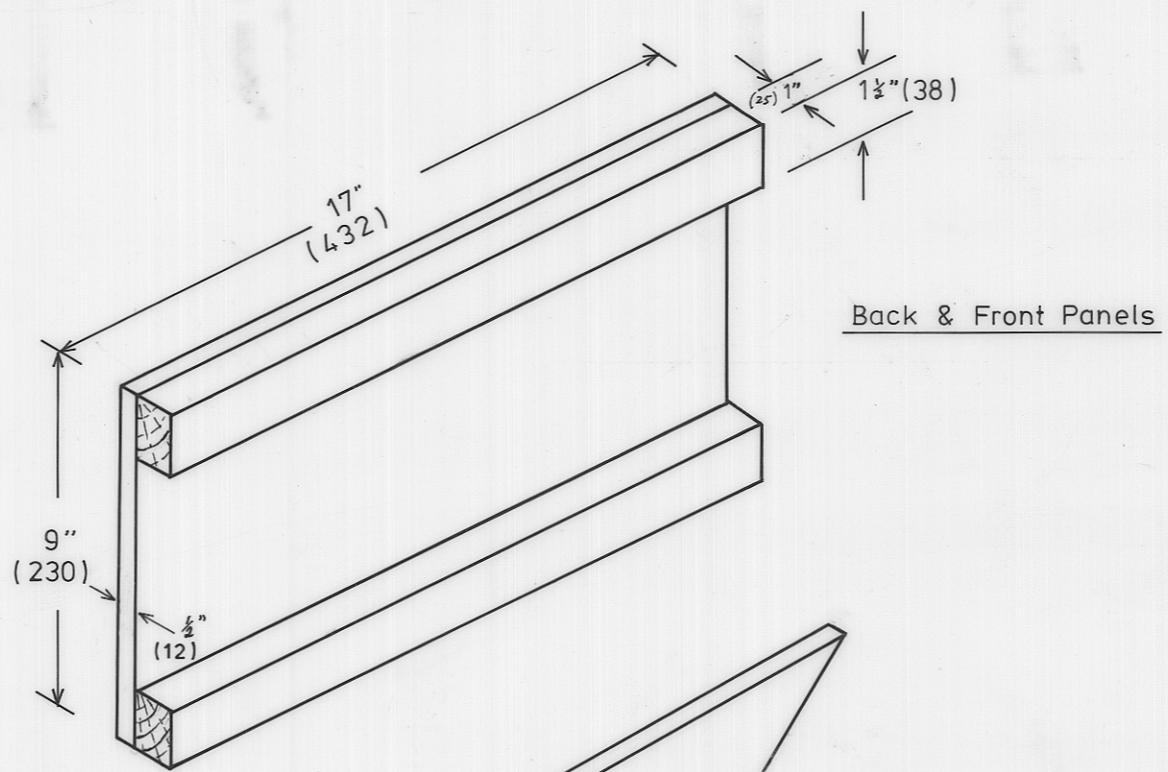
Details of lock fabrication

KEY: $\frac{1}{4}$ " square box spanner

* L Depends on material sizes used to fabricate box



CAN BE FABRICATED IN BRASS



ASSEMBLED BOX
(All screws to be C/S)

NOTE: After assembly, the box may be metal clad if desired.
Bars may be attached to hang the box in any position.