

Section 1  
NORTH-SOUTH SECTION THROUGH THE WESLEY VALE BASIN

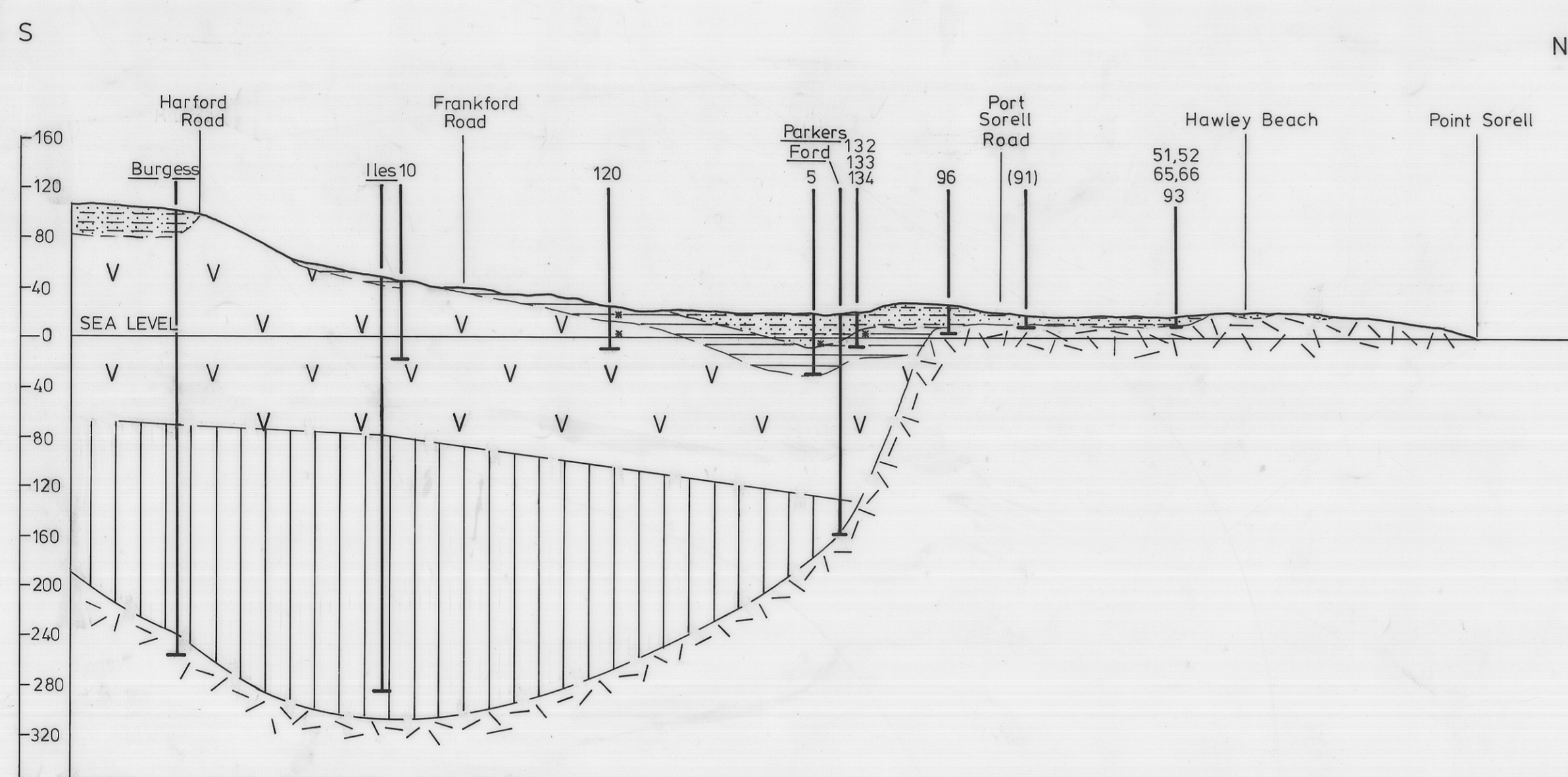
GEOLOGICAL SECTIONS  
DEVONPORT - PORT SORELL - SASSAFRAS AREA  
W.C. CROMER 1979

LEGEND

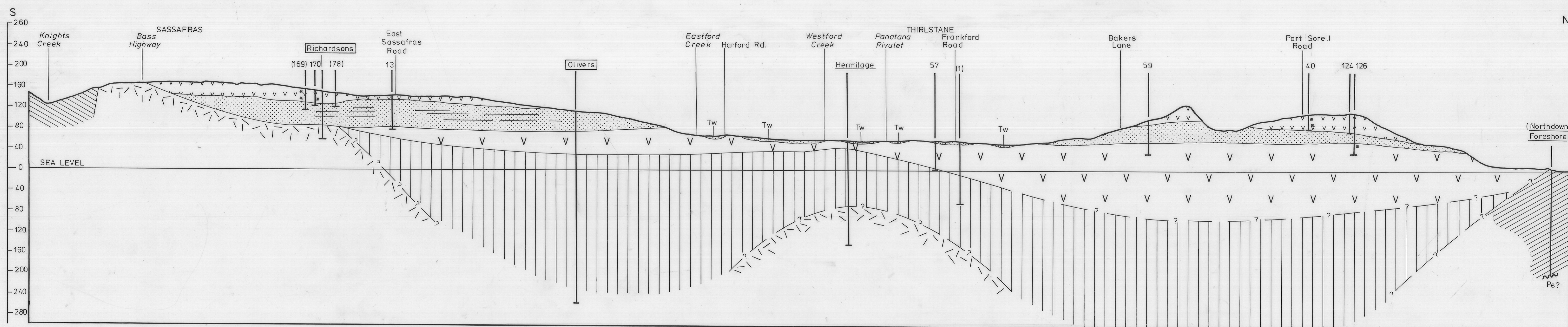
TERTIARY	MORIARTY BASALT	Deeply weathered to coloured textured clay, in places containing basalt and boulders or patches of honeycomb basalt
	WESLEY VALE SAND	Mainly yellow sand, clayey sand or friable sandstone, but also containing clay and tuffaceous sand
	THIRLSTANE BASALT	Fresh basalt usually in alternating zones of massive and vesicular basalt and sometimes weathered to soft basalt in upper levels
	HARFORD BEDS	Pink, brown and grey mudstones, often carbonaceous or lignitic, sometimes sandy and often gravelly in upper levels
JURASSIC	DOLERITE	Usually fresh and hard, but sometimes weathered to coloured textured clay with occasional boulders
PERMIAN	SANDSTONE & MUDSTONE	Weathered to grey sand and clay in upper levels, may be hard and indurated near dolerite contacts

- NOTES: — All sections are of the same scale  
 $V = \frac{12.5}{H}$   
 — Section lines indicated on Fig.2  
 — Water bore numbers correspond to those listed in Appendix 2  
 — Bore numbers in brackets lie adjacent to section line  
 Burgess — Deep oil bores  
 Wilson — Deep stratigraphic bores  
 \* — Depth water struck

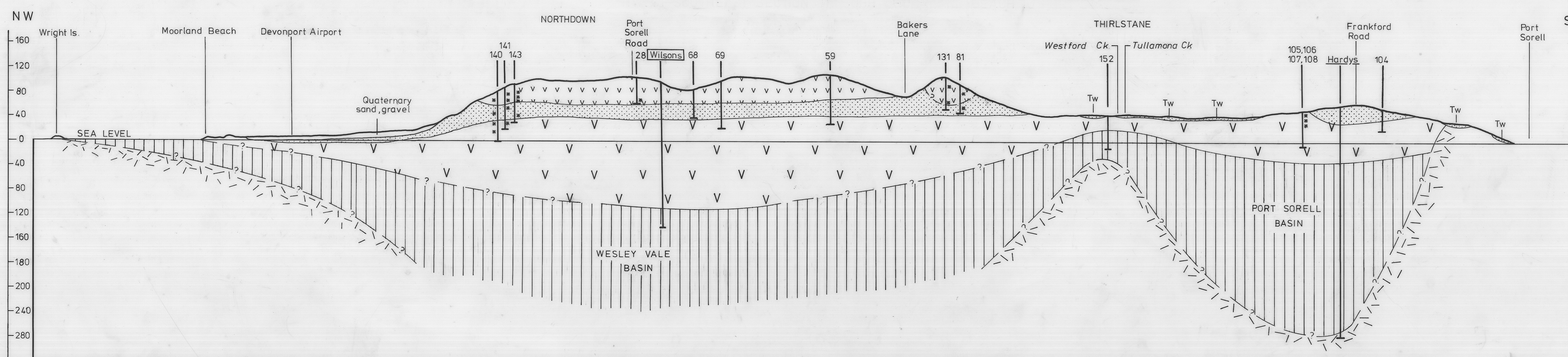
HORIZONTAL SCALE  
0 1 2 km



Section 2  
NORTH-SOUTH SECTION THROUGH PORT SORELL BASIN



Section 3  
NORTH-SOUTH SECTION THROUGH WESLEY VALE AND SASSAFRAS BASINS



Section 4  
NORTHWEST-SOUTHEAST SECTION THROUGH MOORLAND BEACH TO PORT SORELL