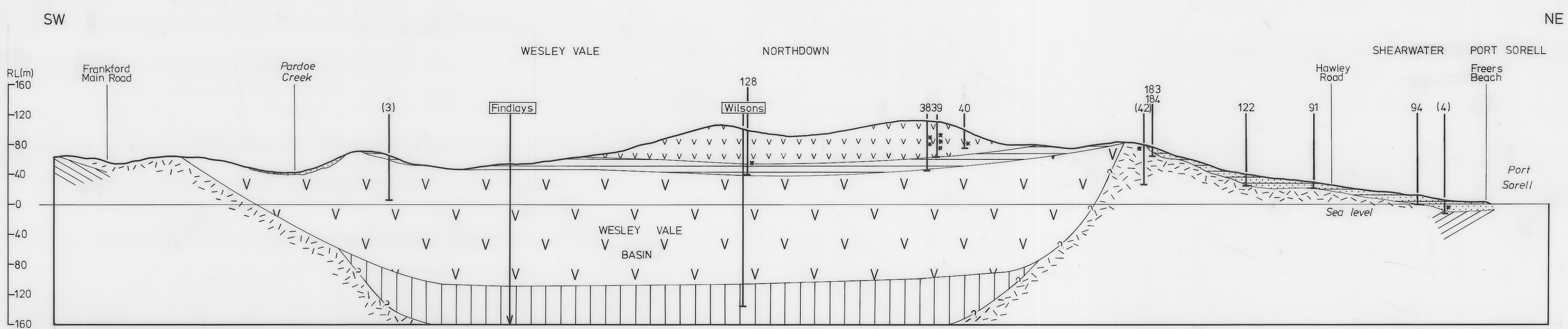
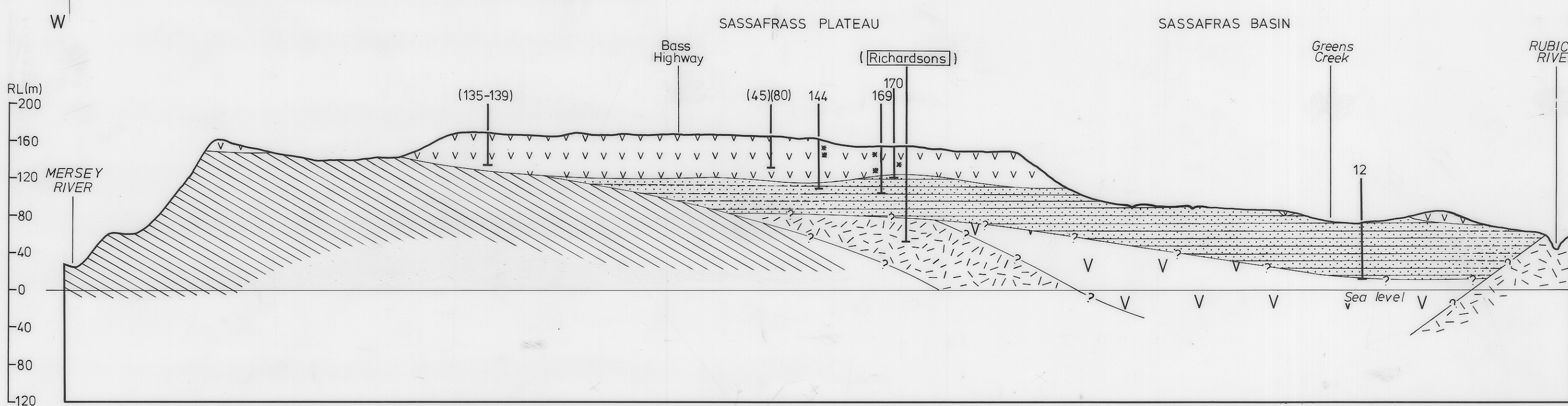


Section 5  
ESE-WNW SECTION THROUGH THE WESLEY VALE AND PORT SORELL BASINS

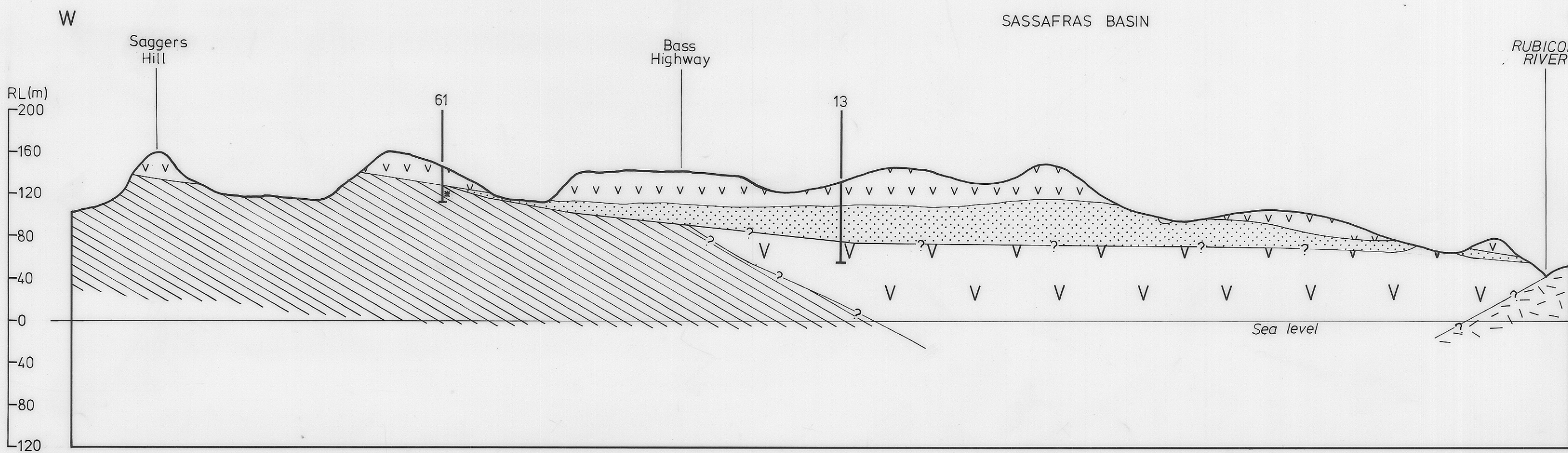


Section 6  
NORTHEAST-SOUTHWEST SECTION FROM PORT SORELL TO THE FRANKFORD HIGHWAY

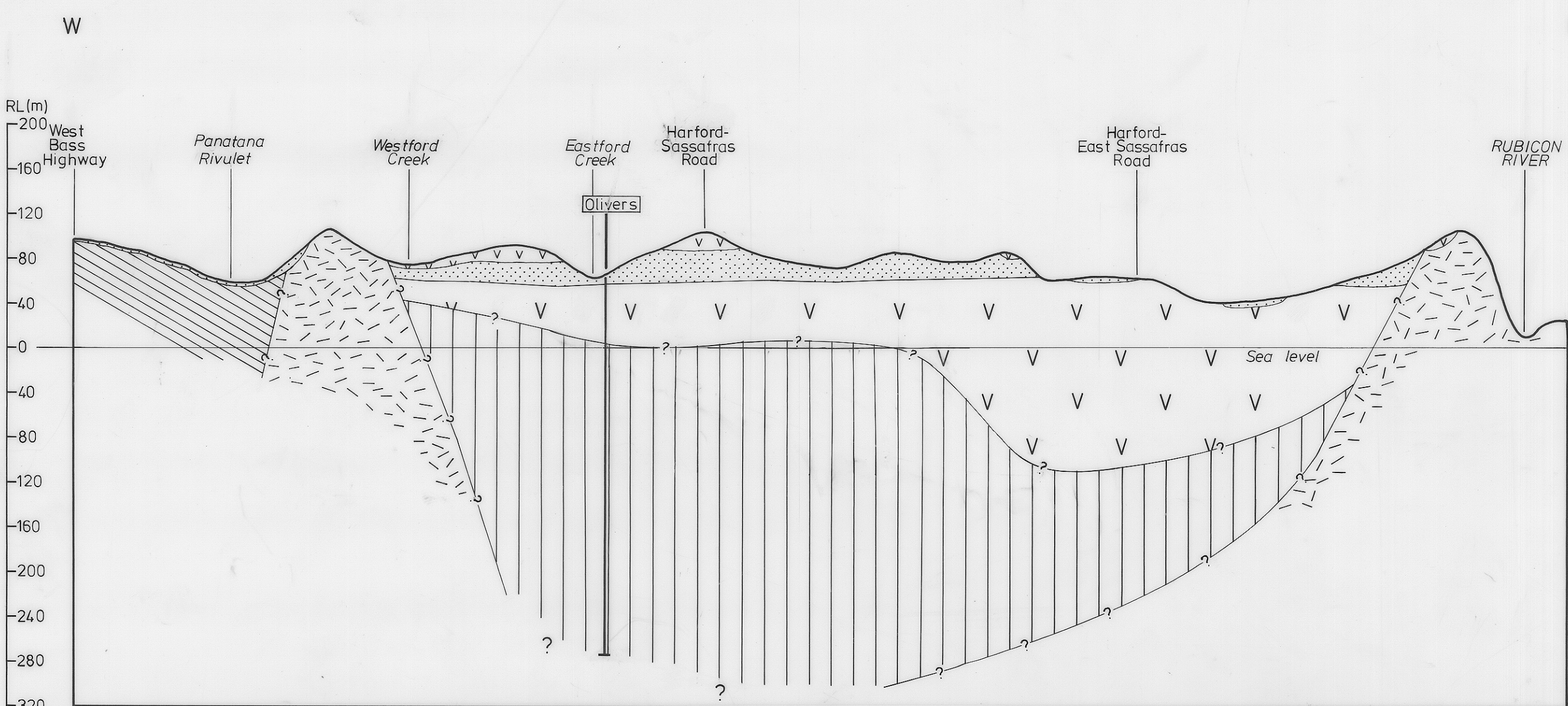
Reduce to 355 mm.



Section 7  
EAST-WEST SECTION THROUGH SASSAFRAS PLATEAU



Section 8  
EAST-WEST SECTION THROUGH SASSAFRAS BASIN



Section 9  
EAST-WEST SECTION THROUGH SASSAFRAS BASIN

GEOLOGICAL SECTIONS  
DEVONPORT - PORT SORELL - SASSAFRAS AREA  
W.C. CROMER 1979

LEGEND

|          |  |                      |  |
|----------|--|----------------------|--|
| TERTIARY |  | MORIARTY BASALT      | Deeply weathered to coloured textured clay, in places containing basalt and boulders or patches of honeycomb basalt              |
|          |  | WESLEY VALE SAND     | Mainly yellow sand, clayey sand or friable sandstone, but also containing clay and tuffaceous sand                               |
|          |  | THIRLSTANE BASALT    | Fresh basalt usually in alternating zones of massive and vesicular basalt and sometimes weathered to soft basalt in upper levels |
|          |  | HARFORD BEDS         | Pink, brown and grey mudstones, often carbonaceous or lignitic, sometimes sandy and often gravelly in upper levels               |
| JURASSIC |  | DOLERITE             | Usually fresh and hard, but sometimes weathered to coloured textured clay with occasional boulders                               |
| PERMIAN  |  | SANDSTONE & MUDSTONE | Weathered to grey sand and clay in upper levels, may be hard and indurated near dolerite contacts                                |

- NOTES: - All sections are at the same scale  
 $\frac{V}{H} = \frac{12.5}{1}$   
 - Section lines indicated on Fig. 2  
 - Water bore numbers correspond to those listed in Appendix 2  
 - Bore numbers in brackets lie adjacent to section line  
 Burgess - Deep oil bores  
 Wilson - Deep stratigraphic bores  
 ■ - Depth water struck

HORIZONTAL SCALE  
0 1 2 km