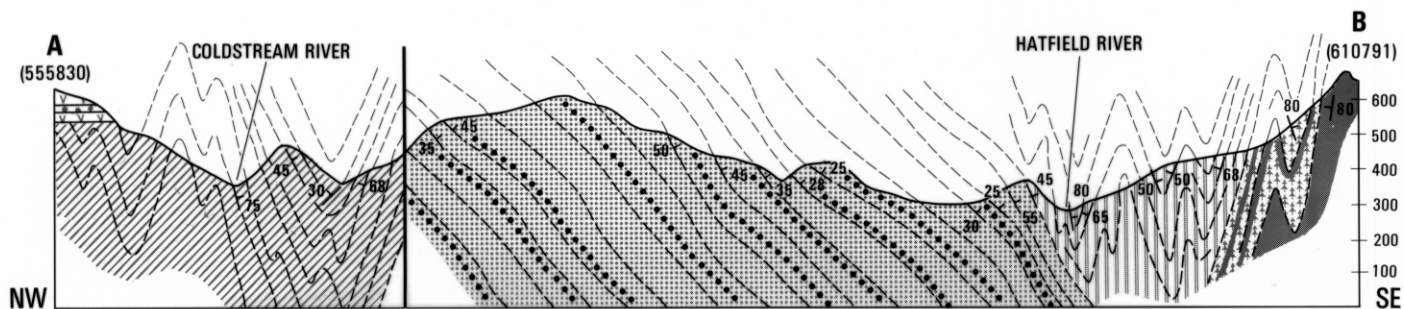


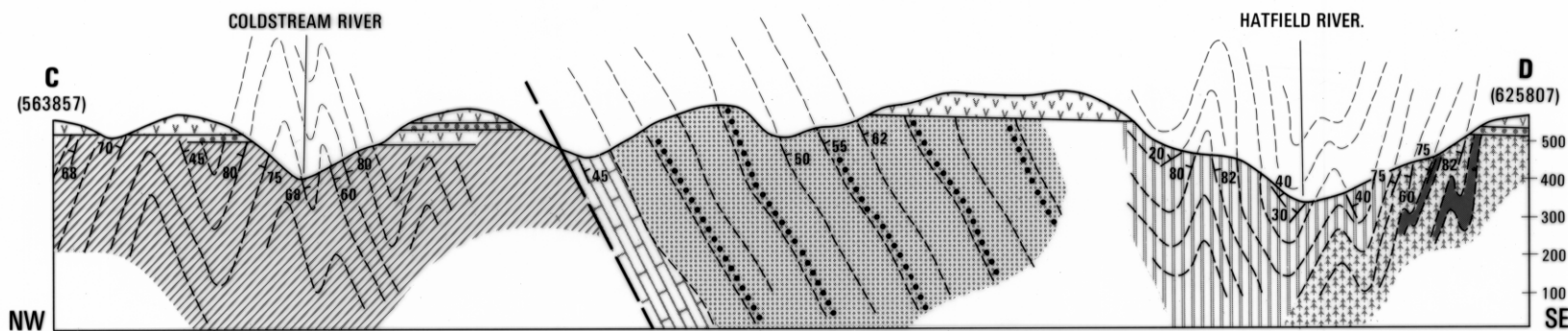
4560

68

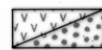
5 cm



Folding is diagrammatic but includes all possible data. Way-up established in greywacke-conglomerate only.



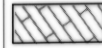
TERTIARY



Basalt/non-marine sediment

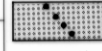


Greywacke, mudstone sequence of the Coldstream River



Limestone conglomerate.

CAMBRIAN



Greywacke-conglomerate, sandstone and mudstone sequence.



Mudstone and greywacke sequence of the Hatfield River.



Black shale and quartzite sequence with quartz conglomerate horizons.

0 1000m 2000m

V:H = 1.65:1

D. J. JENNINGS.

For location of sections see Figure 2.