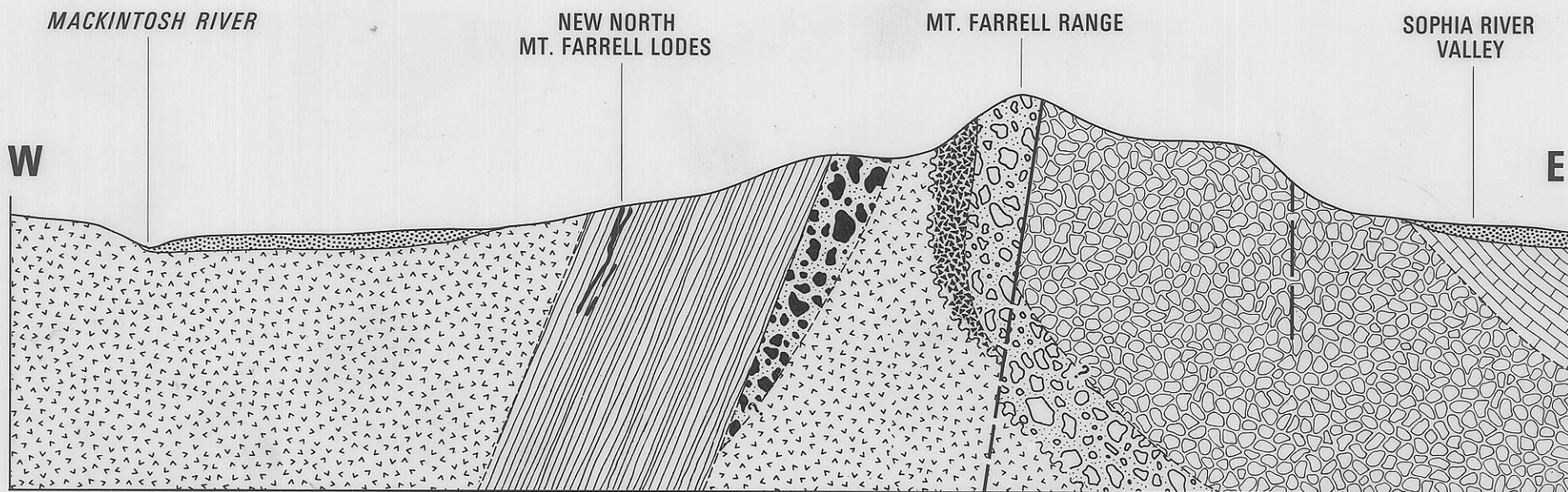


4568

123

5 cm



QUATERNARY



Fluvioglacial deposits.

ORDOVICIAN



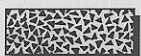
Gordon Limestone



Middle-Upper Owen Conglomerate.

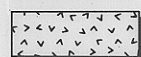


Lower Owen Conglomerate.



Jukes Breccia.

CAMBRIAN



Lava and pyroclastic rocks.



Conglomerate.



Farrell Slate.

**SECTION THROUGH MT. FARRELL SHOWING
GEOLOGICAL SETTING OF MT. FARRELL LODS**

COMPILED AFTER BROOKS (1962)

For location of section see Figure 11

0 0.5 1 km