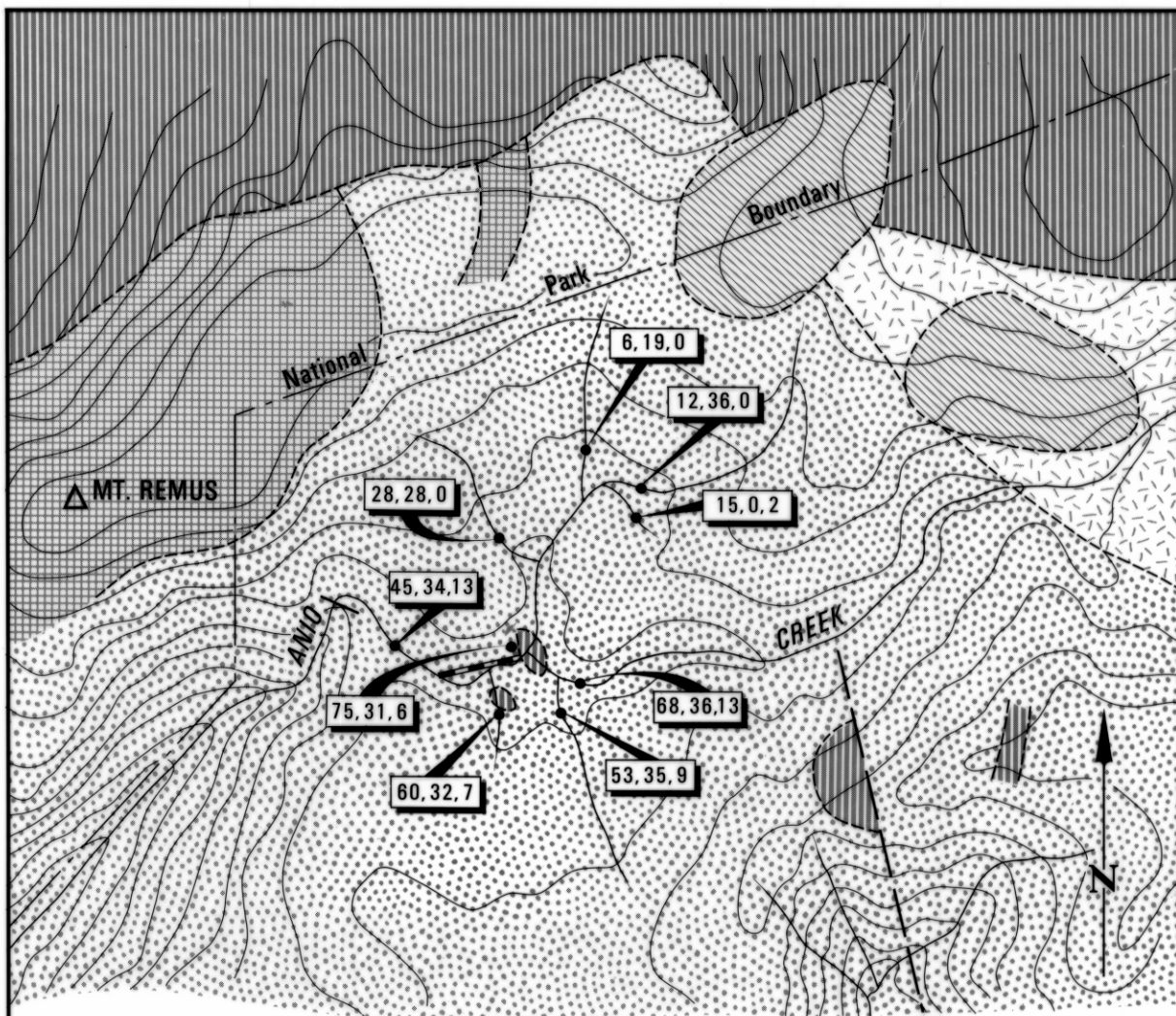


4570

125



QUATERNARY



Glacial deposits.

CAMBRIAN



Quartz and quartz-feldspar porphyry.



Undifferentiated sedimentary and igneous rocks.

PRECAMBRIAN



Quartzite.



Micaceous schist.



Lode



Fault



*Stream sediment sample
(Mo, V, Co (mg/l)
indicated)*

5 cm

MT. REMUS PROSPECT

GEOLOGIST: P.L.F. COLLINS

Compiled from Barton et al. (1966) Threader (1965)

0 1 2 km